

CX系列成像亮度计 CX series imaging luminance meter

- CX系列成像彩色亮度计可实现二维亮度及色度的测量，主要用于图像的亮度、色度、亮度均匀性、色度均匀性等测量，具有成像质量好、精度高、测量速度快、操作方便等优点，配上相应的专用分析软件可用于氛围灯、车载微小发光字符、背光仪表盘、HUD抬头显示器、OLED尾灯等的亮度颜色均匀性，以及前照灯光型光强照度分布。

CX series imaging color luminance meter can realize the measurement of two-dimensional brightness and chromaticity, which is mainly used for the measurement of image brightness, chromaticity, brightness uniformity, chromaticity uniformity, etc. It has the advantages of good imaging quality, high accuracy, fast measurement speed, convenient operation, etc. It can be used for the brightness and color uniformity of atmosphere lights, small on-board luminous characters, backlight instrument panel, HUD head up display, OLED tail lights, etc. with corresponding special analysis software, And headlamp type luminous intensity



特点与优势 Characteristics and advantage

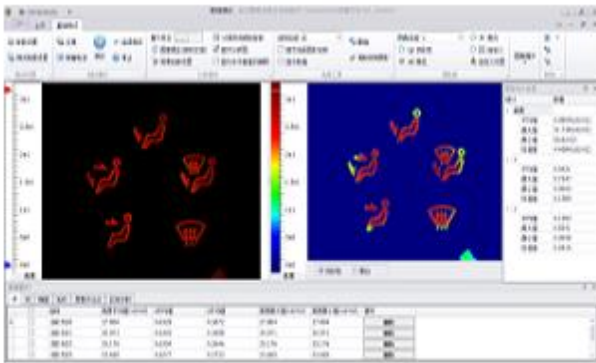
- 1) 测试速度快, 超高重复性, 满足实验室或配合产线上快速精确测试的要求。
1) The testing speed is fast and the repeatability is extremely high, meeting the requirements of rapid and accurate testing in laboratories or production lines.
- 2) 可自动识别出发光区域, 且可用仿真色彩显示, 轻松直观观察亮度和色度的不均匀性。
2) The luminous area can be automatically identified, and can be displayed with simulated color, so that the non-uniformity of brightness and chroma can be observed easily and intuitively.
- 3) 测试结果可设定上下限, 超限合格判定, 色坐标可分BIN功能等。
3) The upper and lower limits can be set for the test results, and the out of limit conformity can be determined. The color coordinates can be divided into BIN functions
- 4) 随意设定9点、13点、25点、400点等的亮度和色度均匀性评价。
4) Randomly set the brightness and chromaticity uniformity evaluation of 9 points, 13 points, 25 points, 400 points, etc.
- 5) 高动态范围针对前照灯可同时准确测量暗区与亮区。
5) High dynamic range can accurately measure both dark and bright areas for headlamps.

技术参数 Specifications

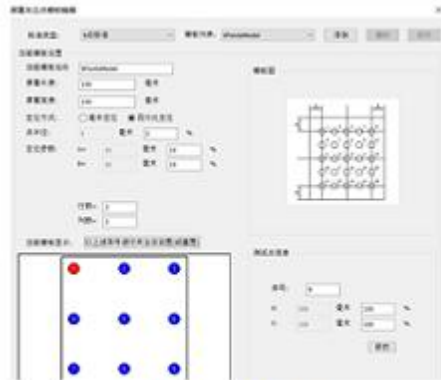
参数	CX-800C	CX-200C
测量参数	亮度、亮度分布、色度、色度均匀性	
亮度测量误差 (标准 A 光源)	3%	4%
亮度测量范围	0.0005cd/m ² ~ 6000cd/m ² ~ 600,000cd/m ²	
色坐标准确度 (标准 A 光源)	0.003	
色坐标重复性	0.0001	0.001
镜头焦距	56 mm (标准) /8mm(广角)	
测量距离	150mm ~ 无穷远 (标准) /350mm ~ 无穷远(广角)	
测量尺寸	普通镜头: 0.5 米处可测量尺寸 ≥80mm*59mm, 约 3.6 寸; 广角镜头: 0.5 米处可测量尺寸 ≥364mm*287mm, 约 17 寸;	
CCD 像素	≥3000*2700	≥1300×1000
计算机接口	USB 3.0	USB 2.0
工作环境	温度 0 ~ 35 °C; 最大湿度: <70% (不冷凝)	

技术参数 Specifications

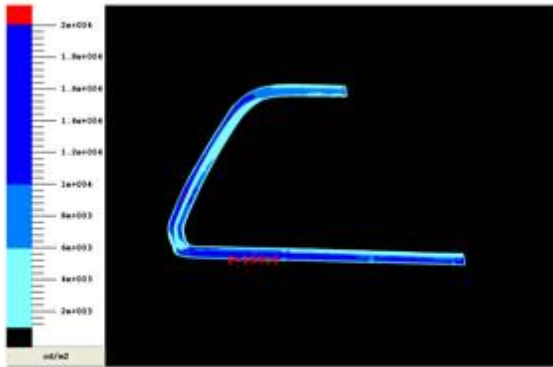
- 软件测试界面:
Software test interface:



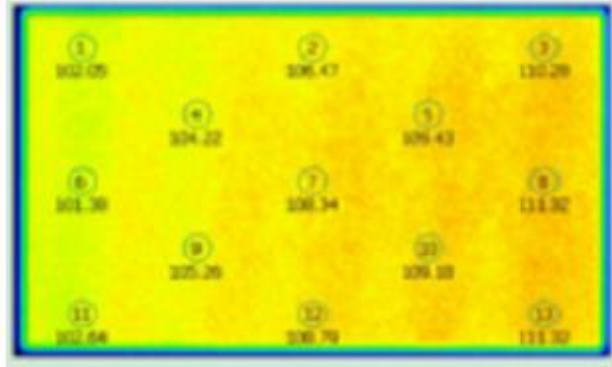
亮度颜色测试



多点均匀性任意设置



汽车氛围灯测试



多点法自动测量