

DMS系列导航屏环境光对比度及光学特性测试 Test of ambient light contrast and optical characteristics of DMS series navigation screen

- 主要用于中控导航屏不同温度条件下的光学特性，环境光等对比度性能的测量，软件控制六轴自动转动，配黑色金属暗箱

It is mainly used to measure the optical characteristics, ambient light and other contrast performance of the central control navigation screen under different temperature conditions. The software controls the six axis automatic rotation and is equipped with a black metal black box



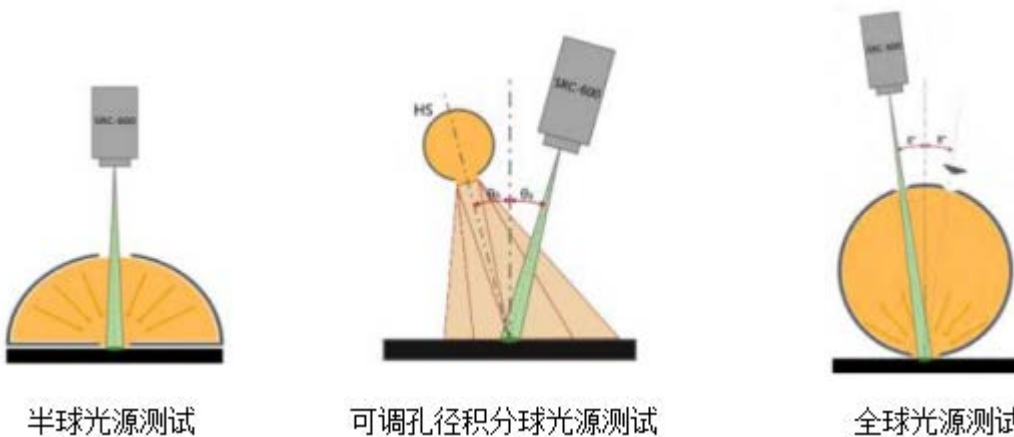
特点与优势 Characteristics and advantage

- 测量手机显示屏，平板，背光模组等各类显示器的亮度均匀性、色度均匀性、色品坐标、相关色温、色域面积、色域覆盖率、白平衡、对比度、萤火虫、串扰、可视角度（包括水平可视角度，垂直可视角度）、色偏、黑白响应时间（上升时间、下降时间）、灰阶响应时间、闪烁特性（JEITA法）、GAMMA等功能。

Measurement of brightness uniformity, chromaticity uniformity, chromaticity coordinates, relevant color temperature, gamut area, gamut coverage, white balance, contrast, firefly, crosstalk, viewing angle (including horizontal viewing angle and vertical viewing angle), color deviation, black and white response time (rise time and fall time), gray scale response time, flicker characteristics (JEITA method) GAMMA and other functions.

- 环境光对比度、反射率曲线测试、漫反射率曲线测试、不同环境光下的对比度/色域变化等参数，软件功能可根据用户需要进行扩展。（选项功能）

Ambient light contrast, reflectance curve test, diffuse reflectance curve test, contrast/color gamut change under different ambient light and other parameters, software functions can be expanded according to user needs. (Option function)



- 显示屏不同温度条件下的亮度、光谱分布及色坐标变化曲线测试，高温或低温条件下来评估环境光对比性能。（选项功能）

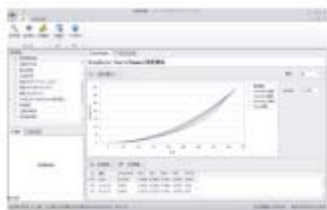
Test the brightness, spectral distribution and color coordinate change curve of display screen under different temperature conditions, and evaluate the ambient light contrast performance under high or low temperature conditions. (Option function)

- 满足SAE、IDMS、IEC、ISO标准要求的环境光模拟装置。

Ambient light simulator meeting the requirements of SAE, IDMS, IEC and ISO standards.

特点与优势 Characteristics and advantage

- 软件界面:
Software interface:



GAMMA 曲线



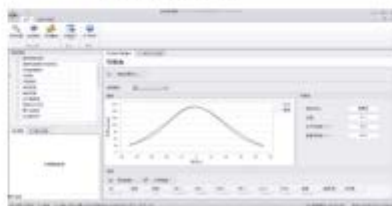
白平衡测试



亮度色度均匀测试



色域测试



视角测试



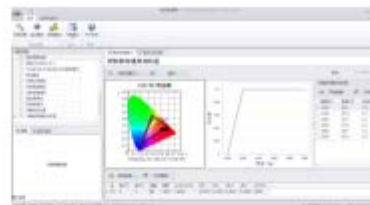
串扰测试



环境光对比度测试



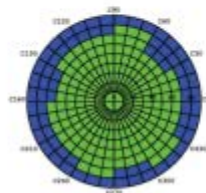
反射率测试



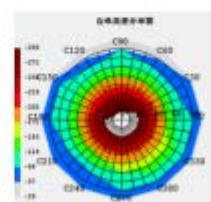
评估环境光对比度



灰阶响应时间测试



色偏测试



亮度分布图

技术参数 Specifications

- 被测样品尺寸：15.6寸以内显示屏
Size of tested sample: display screen within 15.6 inches
- 光谱亮度计与被测显示器间的测试距离：500mm
Test distance between spectrophotometer and measured display: 500mm
- 温度控制范围：-40°C- +90°C
Temperature control range: - 40 °C -+90 °C
- 波长范围：380-780nm
Wavelength range: 380-780nm
- 满足SAE、IDMS、IEC、ISO标准要求的环境光模拟装置
Ambient light simulator meeting the requirements of SAE, IDMS, IEC and ISO standards