

DCA-310色彩分析仪

DCA-310 color analyzer

- 采用高稳定的、光谱响应曲线与CIE1931、严格匹配的三色光电探测部件，可逐点进行光色参数的测量，测试功能包括：

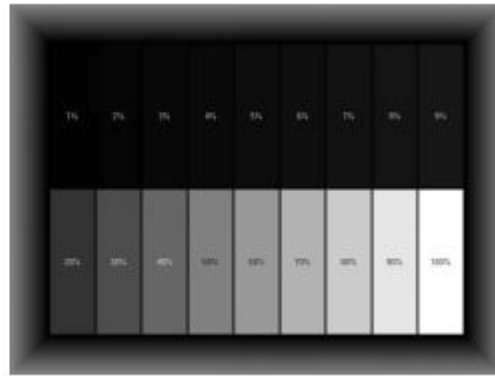
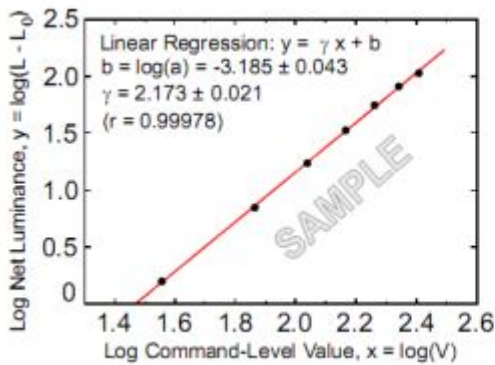
The highly stable, spectral response curve and CIE1931 strictly matched tricolor photoelectric detection components are used to measure the light color parameters point by point. The test functions include:

- 亮度、对比度；
Brightness and contrast;
- 色品坐标(x, y)、(u', v')、相关色温 CCT、三刺激值X、Y、Z、RGB特性分析、
Chromaticity coordinates (x, y), (u', v'), related color temperature CCT, tristimulus value X, Y, Z, RGB characteristic analysis
- 均匀性（也可根据需要配置多个探测器）；
Uniformity (multiple detectors can also be configured as required);
- 闪烁等级（对比法FMA、JEITA法）；
Flicker level (contrast method FMA, JEITA method);
- Gamma曲线的测试及校正（需提供通讯协议或安卓手机下载APP软件配合实现）
Gamma curve test and correction (it is required to provide communication protocol or Android mobile phone to download APP software for coordination)

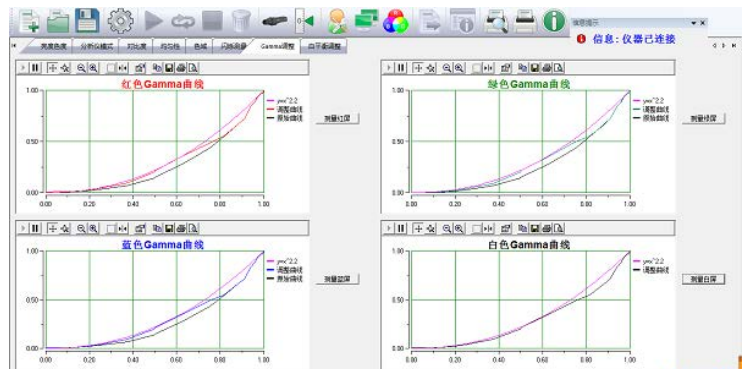


特点与优势 Characteristics and advantage

- 1) 触摸屏操作方便。
 - 1) The touch screen is easy to operate.
- 2) 亮度测量范围宽，低亮度下仍能快速测量，适用于亮度以及亮度对比度的快速高精度测量。
 - 2) The brightness measurement range is wide, and it can still be quickly measured under low brightness. It is suitable for fast and high-precision measurement of brightness and brightness contrast.
- 3) 可评价显示器的GAMMA灰阶特性， GAMMA校正
 - 3) GAMMA gray scale characteristics of evaluable display, GAMMA correction
- 4) 采样速度快，可用于测量闪烁（对比法、JEITA法）等瞬时特性的准确测量(闪烁探头选配)。
 - 4) With fast sampling speed, it can be used to measure flicker (contrast method, JEITA method) and other instantaneous characteristics accurately (flicker probe option).



● 软件界面：
Software interface:



技术参数 Specifications

- 1) 亮度精度及范围 (白色) : $2\% \pm 0.0010 \text{cd/m}^2$ 10-1000 cd/m^2
1) Brightness accuracy and range (white): $2\% \pm 0.0010 \text{cd/m}^2$ 10-1000 cd/m^2
- 2) 色度精度及范围 (白色) : 0.003 20-1000 cd/m^2
2) Chromaticity precision and range (white): 0.003 20-1000 cd/m^2
- 3) 闪烁对比法精度及范围 (2 cd/m^2 及以上)
1% (闪烁频率: 30 Hz AC/DC 10% 正弦波)
3) Accuracy and range of scintillation contrast method (2 cd/m^2 and above)
1% (flicker frequency: 30 Hz AC/DC 10% sine wave)
- 4) 闪烁JEITA法精度及范围 (2 cd/m^2 及以上)
0.5dB (闪烁频率: 30Hz AC/DC 10% 正弦波) [同DCA-527一样查一下同行指标]
4) Accuracy and range of scintillation JEITA method (2 cd/m^2 and above)
- 0.5dB (flicker frequency: 30Hz AC/DC 10% sine wave) [check the same index as DCA-527]
- 5) 重复同步频率: 0.5至300 Hz (亮度或者色度)
5) Repetitive synchronization frequency: 0.5 to 300 Hz (brightness or chroma)