

# OLED-1000 多路OLED加速老化寿命与光电性能分析系统

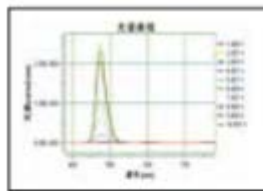
## OLED-1000 multi-channel OLED accelerated aging life and photoelectric performance analysis system

- 实现多路OLED的寿命同时测试,  
Realize simultaneous life test of multiple OLEDs,
- 电压-亮度曲线、电压-光谱分布/色度曲线、  
Voltage luminance curve, voltage spectral distribution/chromaticity curve
- 电压-电流曲线、电压-电流效率 (cd/A) 曲线、电压-电流密度 (A/cm<sup>2</sup>) 曲线  
Voltage current curve, voltage current efficiency (cd/A) curve, voltage current density (A/cm<sup>2</sup>) curve
- 电压-外量子效率曲线、  
Voltage external quantum efficiency curve
- 电流-亮度曲线、电流-色度变化曲线等的测量。  
Measurement of current brightness curve, current chromaticity change curve, etc.
- 配置三维移动机构可实现多片OLED多个区域的以上光色电参数的测量。  
The above photochromic and electrical parameters of multiple OLEDs in multiple areas can be measured by configuring a three-dimensional mobile mechanism.

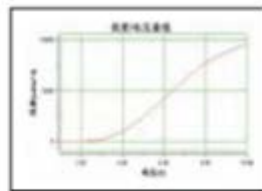


技术参数 Specifications

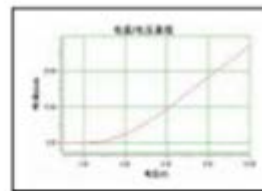
- 光学设备固定装置：可固定远方SRC系列光谱彩色亮度计；  
Fixing device of optical equipment: remote SRC series spectral color luminance meter can be fixed;
- 载物平台：配基本样品夹持装置，以方便夹持用户自备的被测显示器的专用夹具；  
Load platform: equipped with a basic sample holding device to facilitate the clamping of a special fixture for the user's self provided display to be tested;
- 样品放置状态：被测产品在载物平台上水平放置；  
Sample placement status: the tested product is placed horizontally on the loading platform;
- XYZ移动平台：XYZ轴移动分辨率 $\pm 0.01$  mm；  
XYZ mobile platform: XYZ axis movement resolution  $\pm 0.01$  mm;
- 控制及数据传输方式：系统采用高性能的伺服电机系统控制，稳定性及可靠性更好；  
Control and data transmission mode: the system adopts high-performance servo motor system for control, with better stability and reliability;
- 暗箱：整体采用金属板材构建的测光暗室，被测系统放在测光暗室中，整体美观大方。  
Darkroom: It is a light measuring darkroom made of metal plates, and the tested system is placed in the darkroom, which is beautiful and generous.



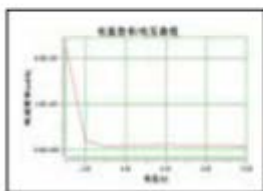
电压-发光光谱曲线  
Voltage-Spectral Power Distribution (SPD) Curve



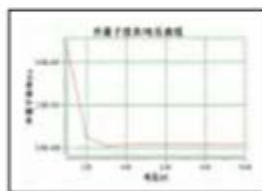
电压-亮度曲线  
Voltage-Luminance Curve



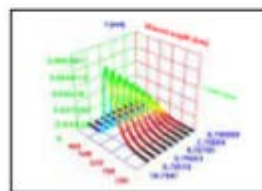
电压-电流曲线  
Voltage-Current Curve



电压-电流效率曲线  
Voltage-Current Efficiency Curve



电压-外量子效率曲线  
Voltage-Quantum Efficiency Curve



3D光谱分布图  
3D spectral distribution