

e.dot+™ Electric Guns

Compact electric guns precisely dispense small dots or beads of hot melt adhesive at high speeds.



Nordson e.dot+ electric guns:

- Deliver accurate dot or bead placement
- Require minimal space for installation and service
- Install quickly and easily
- Operate quietly

All-electric e.dot+ guns provide precise, high-speed dot or bead placement, quiet operation, a long service life and compact size. The all-electric design eliminates the need for compressed operating air and dynamic seals and a service life in excess of 200 million cycles means superior productivity and very infrequent replacement.

A reduced-cavity nozzle and ball and nozzle/seat design provides consistent dots or beads without stringing or tailing, at a wide range of line speeds. Manual stroke adjustment allows re-zeroing of the module after servicing.

A fast-acting coil delivers small dots or beads at fast line speeds with on-times as low as 0.4 ms, with cycle rates as fast as 1.8 ms*. The module coil connector allows fast replacement with minimal downtime.

Plug and play connections between the adhesive melter, gun, driver and small-diameter hose, a removable armature and seat, and interchangeable nozzles simplify installation and maintenance.

An integrated Saturn filter removes any contaminants from the adhesive flow path.

* Dependent on adhesive viscosity

e.dot+™ Electric Guns

Specifications

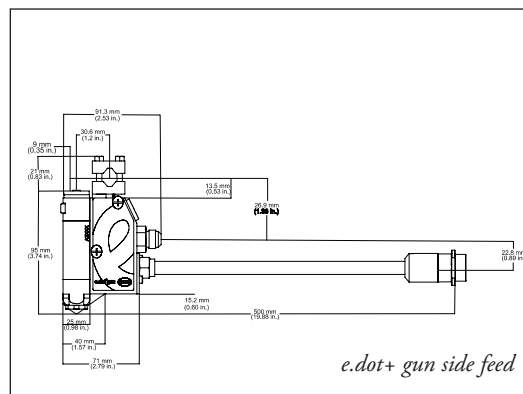
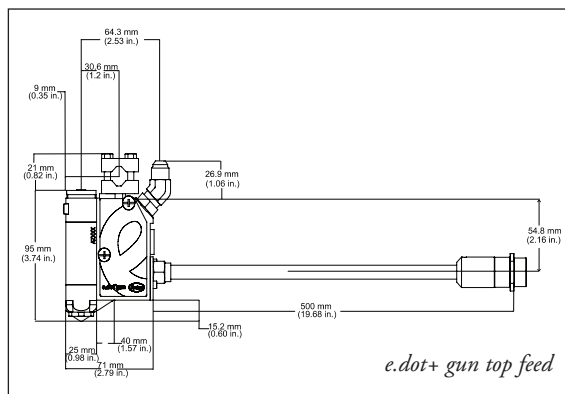
Maximum Hydraulic Pressure	10,000 kPa (100 bars/1450 psi)
Maximum Operating Pressure	4800 kPa (48 bars/700 psi)
Working Viscosity	1000 cps, max 5000 cps
Cycle Speed	1.8 ms*
Electrical Connections	Quick-disconnect
Operating Temperature	365° F (185° C), max 392°F (200°C)**
Electrical Requirements	See gun driver specifications
Heating Method	Cartridge heater
Integrated Saturn Filter	200 mesh

* minimum on-time 0.4 ms viscosity dependent; use e.dot+ application guide.

** dependent on pattern; use e.dot+ application guide.

Gun Driver Specifications

	LogiComm® Control System	LogiComm OEM Gun Driver Board	LogiComm Gun Driver	e driver Single Box
Capacity	4/8 channels / board	4 channels / board	4/8 channels / board	1 channel
Electrical Service	100-240 VAC, 50/60 Hz	110-230 VAC, 50/60 Hz; 24 VDC	100-240 VAC, 50/60 Hz	170 to 264 VAC, 50/60 Hz
Maximum Gun Power Capacity	160 Watts	110 Watts	160 Watts total	95 Watts
Input Line Fuses	3 Amps	2 Amps	3 Amps	2 Amps
Trigger Source Options	NPN or PNP (24 VDC sink/source)	24 VDC	NPN or PNP	24 VDC and 5 VDC
Enclosure Rating	IP-30	IP-20	IP-X4 terminal block version IP-30 connector version	IP-20



For more information, speak with your Nordson representative or contact your Nordson regional office.

United States

Duluth, Georgia
(800) 683-2314 **Phone**
(866) 667-3329 **Fax**

Canada

Markham, Ontario
(800) 463-3200 **Phone**
(905) 475-8821 **Fax**

Europe

Erkrath, Germany
(49) 211-9205-0 **Phone**
(49) 211-254658 **Fax**

Japan

Tokyo, Japan
(81) 3-5762-2700 **Phone**
(81) 3-5762-2701 **Fax**

Asia/Australia/ Latin America

Amherst, Ohio
(440) 985-4797 **Phone**
(440) 985-1096 **Fax**

Find us on:



PKL-07-5104
Reissued 10/12
© 2007, 2012 Nordson Corporation
All Rights Reserved.
Printed in U.S.A.
Nordson reserves the right to make design changes between printings.

