

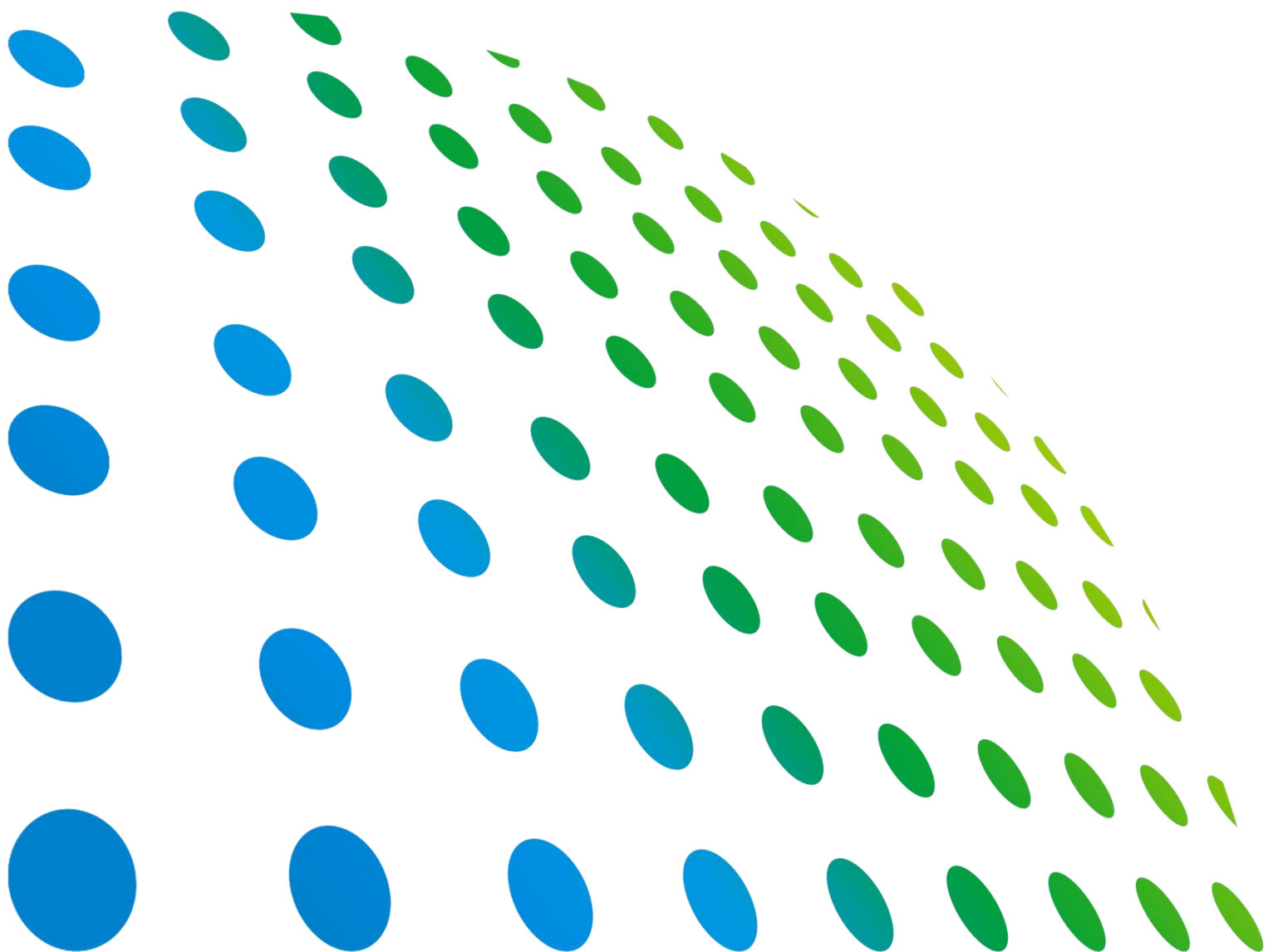
**Chroma**

視頻信號圖形產生器

**HDMI 2.1 信號模組**

**A223805**

使用手冊



Get more information by downloading Chroma ATE Solutions APP

下載 Chroma ATE Solutions APP · 取得更多資訊



# HDMI 2.1 信號模組 A223805 使用手冊



版本 1.1  
2021 年 4 月

# 法律事項聲明

本使用手冊內容如有變更，恕不另行通知。

本公司並不對本使用手冊之適售性、適合作某種特殊用途之使用或其他任何事項作任何明示、暗示或其他形式之保證或擔保。故本公司將不對手冊內容之錯誤，或因增減、展示或以其他方法使用本手冊所造成之直接、間接、突發性或繼續性之損害負任何責任。

## **致茂電子股份有限公司**

桃園市333001龜山區文茂路88號

**版權聲明：**著作人—致茂電子股份有限公司—西元 2020 年，**版權所有，翻印必究**。  
未經本公司同意或依著作權法之規定准許，不得重製、節錄或翻譯本使用手冊之任何內容。

# 保 證 書

致茂電子股份有限公司秉持“品質第一是責任，客戶滿意是榮譽”之信念，對所製造及銷售之產品自交貨日起一年內，保證正常使用下產生故障或損壞，負責免費修復。

保證期間內，對於下列情形之一者，本公司不負免費修復責任，本公司於修復後依維修情況酌收費用：

1. 非本公司或本公司正式授權代理商直接銷售之產品。
2. 因不可抗拒之災變，或可歸責於使用者未遵照操作手冊規定使用或使用人之過失，如操作不當或其他處置造成故障或損壞。
3. 非經本公司同意，擅自拆卸修理或自行改裝或加裝附屬品，造成故障或損壞。

保證期間內，故障或損壞之維修品，使用者應負責運送到本公司或本公司指定之地點，其送達之費用由使用者負擔。修復完畢後運交使用者(限台灣地區)或其指定地點(限台灣地區)之費用由本公司負擔。運送期間之保險由使用者自行向保險公司投保。

## **致茂電子股份有限公司**

桃園市 333001 龜山區文茂路 88 號

服務專線：(03)327-9999

傳真電話：(03)327-8898

電子信箱：[info@chromaate.com](mailto:info@chromaate.com)

網 址：[www.chromaate.com](http://www.chromaate.com)

# 設備及材料污染控制聲明

請檢視產品上之環保回收標示以對應下列之<有毒有害物質或元素表>。



<表一>

部件名稱	有毒有害物質或元素					
	鉛	汞	鎘	六价鉻	多溴聯苯/ 多溴聯苯醚	鄰苯二甲酸酯類化合物
	Pb	Hg	Cd	Cr <sup>6+</sup>	PBB/PBDE	DEHP/BBP/DBP/DIBP
PCBA	○	○	○	○	○	○
機殼	○	○	○	○	○	○
標準配件	○	○	○	○	○	○
包裝材料	○	○	○	○	○	○

○：表示該有毒有害物質在該部件所有均質材料中的含量在 SJ/T 11363-2006 與 EU Directive 2011/65/EU 及 2015/863/EU 規定的限量要求以下。

×：表示該有毒有害物質至少在該部件的某一均質材料中的含量超出 SJ/T 11363-2006 與 EU Directive 2011/65/EU 及 2015/863/EU 規定的限量要求。

註: 1. 產品上有 CE 標示亦代表符合 EU Directive 2011/65/EU 及 2015/863/EU 規定要求。

2. 本產品符合歐盟 REACH 法規對 SVHC 物質之管制要求。

## 處置

切勿將本設備處理為未分類的廢棄物，本設備需做分類回收。有關廢棄物收集系統的訊息，請聯絡貴公司所在地的相關政府機關。假若將電子電器設備任意丟棄於垃圾掩埋地或垃圾場，有害的物質會滲漏進地下水並進入食物鏈，將會損害健康。當更換舊裝置時，零售商在法律上有義務要免費回收且處理舊裝置。



<表二>

部件名稱	有毒有害物質或元素					
	鉛	汞	鎘	六价鉻	多溴聯苯/ 多溴聯苯醚	鄰苯二甲酸酯類化合物
	Pb	Hg	Cd	Cr <sup>6+</sup>	PBB/PBDE	DEHP/BBP/DBP/DIBP
PCBA	×	○	○	○	○	○
機殼	×	○	○	○	○	○
標準配件	×	○	○	○	○	○
包裝材料	○	○	○	○	○	○

○：表示該有毒有害物質在該部件所有均質材料中的含量在 SJ/T 11363-2006 與 EU Directive 2011/65/EU 及 2015/863/EU 規定的限量要求以下。

×

1. Chroma 尚未全面完成無鉛焊錫與材料轉換，故部品含鉛量未全面符合限量要求。
2. 產品在使用手冊所定義之使用環境條件下，可確保其環保使用期限。
3. 本產品符合歐盟 REACH 法規對 SVHC 物質之管制要求。

### 處置

切勿將本設備處理為未分類的廢棄物，本設備需做分類回收。有關廢棄物收集系統的訊息，請聯絡貴公司所在地的相關政府機關。假若將電子電器設備任意丟棄於垃圾掩埋地或垃圾場，有害的物質會滲漏進地下水並進入食物鏈，將會損害健康。當更換舊裝置時，零售商在法律上有義務要免費回收且處理舊裝置。



# 安全概要

於各階段操作期間與本儀器的維修服務必須注意下列一般性安全預防措施。無法遵守這些預防措施或本手冊中任何明確的警告，將違反設計、製造及儀器使用的安全標準。

如果因顧客無法遵守這些要求，*Chroma* 將不負任何賠償責任。



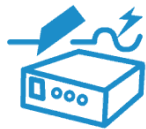
## 接上電源之前

檢查電源符合本電源供應器之額定輸入值。



## 保護接地

開啟電源前，請確定連接保護接地以預防電擊。



## 保護接地的必要性

勿切斷內部或外側保護接地線或中斷保護接地端子的連接。如此將引起潛在電擊危險可能對人體帶來傷害。



## 保險絲

僅可使用所需額定電流、電壓及特定形式的保險絲（正常的熔絲，時間延遲等等……）。勿使用不同規格的保險絲或短路保險絲座。否則可能引起電擊或火災的危險。



## 勿於易爆的空氣下操作

勿操作儀器於易燃瓦斯或氣體之下。儀器應在通風良好的環境下使用。



## 勿拆掉儀器的外殼

操作人員不可拆掉儀器的外殼。零件的更換及內部的調整僅可由合格的維修人員來執行。



# 安全符號

	危險：高壓。
	說明：為避免傷害，人員死亡或對儀器的損害，操作者必須參考手冊中的說明。
	高溫：當見此符號，代表此處之溫度高於人體可接受範圍，勿任意接觸以避免人員傷害。
	保護接地端子：若有失誤的情形下保護以防止電擊。此符號表示儀器操作前端子必須連接至大地。
	功能性接地：在未明確指出是否有接地保護的情況下，此符號為接地端子的識別標示。
	機殼或機箱端子：此符號為機殼或機箱端子的識別標示。
	AC 交流電源
	AC/DC 交直流電源
	DC 直流電源
	按壓式電源開關
	警告：標記表示危險，用來提醒使用者注意若未依循正確的操作程式，可能會導致人員的傷害。在完全瞭解及執行須注意的事項前，切勿忽視警告標記並繼續操作。
	注意：標記表示危險。若沒有適時地察覺，可能導致人員的傷害或死亡，此標記喚起您對程式、慣例、條件等的注意。
	提示：注意標示，程式、應用或其他方面的重要資料，請特別詳讀。

# 版本修訂紀錄

下面列示本手冊於每次版本修訂時新增、刪減及更新的章節。

日期	版本	修訂紀錄
2020 年 11 月	1.0	完成本手冊。
2021 年 4 月	1.1	修改下列章節: <ul style="list-style-type: none"><li>- “概說”一章中的“面板說明”一節。</li><li>- 附錄 “A223805 Default Timing List” 及 “A223805 Default Pattern List”。</li></ul> 新增 “Timing 參數說明”一章。

# 目 錄

---

<b>1. 概說</b> .....	<b>1-1</b>
1.1 產品特點.....	1-1
1.2 產品規格.....	1-1
1.3 標準配件與選購配件.....	1-2
1.4 面板說明.....	1-2
1.5 檢視.....	1-3
<b>2. Timing 參數說明</b> .....	<b>2-1</b>
<b>附錄 A A223805 Default Timing List</b> .....	<b>A-1</b>
<b>附錄 B A223805 Default Pattern List</b> .....	<b>B-1</b>



# 1. 概說

## 1.1 產品特點


- 支援 HDMI 2.1 版本
- 支援下列 FRL 模式
  - 8K x 4K @ 60 Hz 輸出 ( 4:2:2 , 4:4:4 需開啟 DSC 功能)
  - 3 / 6 / 8 / 10 / 12 Gbps 模式
  - 3 / 4 Lane 模式
- 支援 RGB 4:4:4/YCbCr 4:4:4 or 4:2:2 or 4:2:0 格式設定
- HDCP 2.3 / 2.2 / 1.4 測試功能
- DSC (Display Stream Compress) v1.2a 測試功能
- 支援廣色域色彩空間(Wide Color Gamut) - BT.2020
- HDR 高動態範圍影像 (High Dynamic Range)測試功能 (HDR Infoframe & Metadata/EOTF)
- SCDC 狀態與控制數據通道 (Status & Control Data Channel) 資訊讀取功能

## 1.2 產品規格

A223805 HDMI Signal Module	
<b>VIDEO</b>	
Signal compliant	HDMI v2.1 specification
Protocol	TMDS / FRL 3&4 Lane configuration
Pixel rate range	2376 MHz max. (Support CEA / CTA standard timing)
FRL bit rates	Max 48 Gbps (12Gbps x 4 lanes)
Resolution	8Kx4K@60Hz ( 4:2:0 without DSC , 4:2:2 , 4:4:4 with DSC)
Support timing	CEA-861-F & CTA-861-G (* maximum support up to 8K@60Hz standard timing)
Video signal type	RGB / YCbCr
Sampling mode	RGB 4:4:4 / YCbCr 4:4:4 or 4:2:2 or 4:2:0
Color depth	24 / 30 / 36 @ RGB & YCbCr
Color space	RGB / ITU-R BT.601 / ITU-R BT.709 / ITU-R BT.2020
HDCP	HDCP v1.4 / v2.2 / v2.3
HDR	HDR 10 / HLG
E-EDID	Version 1.3 ( Read / Write / Compare / Edit / Analysis )
SCDC	Read
3D	Top-and-Bottom Side-by-Side (Half)
Static HDR	HDR 10 / HLG
DSC	VESA DSC v1.2a
<b>AUDIO</b>	
Channel	8 Channel (FL / FR / RL / RR / FC / LFE / RLC / RRC)
Sample rate	32, 44.1, 48, 88.2, 96, 176.4, 192KHz +/- 1000ppm
Bits per sample	16 / 20 / 24 Bit

Amplitude	-90.3 ~ 0.0 dBFS / -138.47 ~ 0.0 dBFS programmable
Frequency	10 Hz ~ 20 KHz, 1 Hz/step
ARC output	S/PDIF (coaxial)
eARC	Support
<b>OTHERS</b>	
Connector	HDMI x 1 , S/PDIF In x 1 (coaxial), S/PDIF Out x 1 (coaxial)
Operating temperature	+5 ~ +40 °C
Storage temperature	-20 ~ 60 °C
Humidity	20 ~ 90%
Weight	< 2 kg
Dimensions (H x W x D mm)	264 x 350 x 350 mm ( 2 x 2238 module slot )

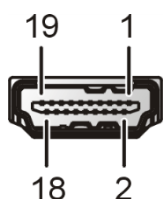
### 1.3 標準配件與選購配件

A223805 HDMI Signal Module 標準配件		
HDMI Cable x 1 W38-000752		
		

### 1.4 面板說明



編號	說明	編號	說明
1	S/PDIF In & Out	2	HDMI Port



腳位	名稱	腳位	名稱	腳位	名稱
1	TX2+	8	TX0_Shield	15	DDC_SCL
2	TX2_Shield	9	TX0-	16	DDC_SDA
3	TX2-	10	TXC+	17	GND /HEAC Shield
4	TX1+	11	TXC_Shield	18	+5V
5	TX1_Shield	12	TXC-	19	Hot Plug Detect / HEAC-
6	TX1-	13	CEC		
7	TX0+	14	Utility / HEAC+		

## 1.5 檢視

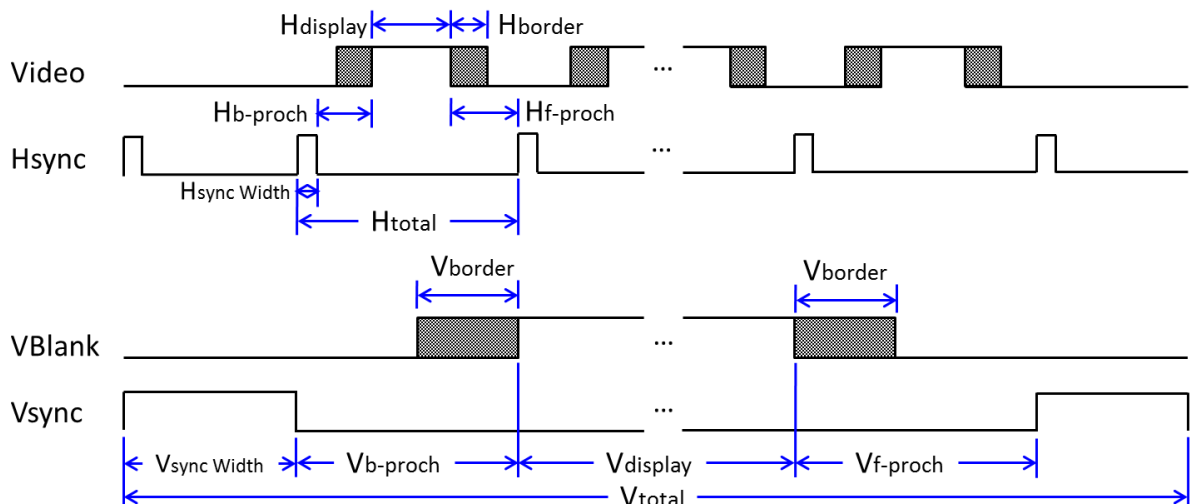
儀器拆封後，檢查是否有任何運送造成的損害。請保留所有的包裝材，以便如有需要將儀器送回時使用。若發現儀器有任何損害，請立刻對送貨商提出索賠要求。未經本公司同意前，請勿直接將儀器送回致茂電子。





## 2. Timing 參數說明

一般 LCD 監視器的輸入信號共有三種，視頻信號（VIDEO），水平同步信號（HORIZONTAL SYNC），及垂直同步信號（VERTICAL SYNC）；Hsync 單位時間為 Pixel(dot、clock)、Vsync 單位時間為 Line(Htotal)，Video/Hsync/Vsync 之時序如下圖表示：



A 223805 HDMI Signal Module Timing 參數說明		
Timing Name	顯示 Timing 之名稱	
	[ String ] 顯示選擇的 Timing 名稱	
Video Port	選擇輸出出的 Video Port，可選擇要輸出的模組。 * 並非所有 Timing 都能在不同的模組之間輸出	
	ANALOG	設定於 ANALOG 信號介面進行輸出
	TV	設定於 TV 信號介面進行輸出
	SDTV	設定於 SDTV 信號介面進行輸出
	HDTV	設定於 HDTV 信號介面進行輸出
	DVI	設定於 DVI 信號介面進行輸出
	HDMI	設定於 HDMI 信號介面進行輸出
	DP	設定於 DP 信號介面進行輸出
	SDI	設定於 SDI 信號介面進行輸出
	USB-C	設定於 USB-C 信號介面進行輸出
	HDMI 2.1	設定於 HDMI 2.1 信號介面進行輸出
Pixel Rate	顯示 Timing Pixel Rate	
	0 ~ 2376 MHz 0.00001 / step	顯示選擇 Timing 的 Pixel Rate 數值
Interlace Mode	設定 Interlace Mode	
	Enable / Disable	啟動 / 關閉 Interlace Mode (垂直線奇偶數不能互換)
Htotal	水平時間：代表一條掃描線之時間	
	32 ~ 15000, 1/step	設定 Timing 的 Htotal 數值(不支援奇數點設定)
Hdisplay	水平顯像時間：代表一條掃描線上能夠顯示出畫面的時間	

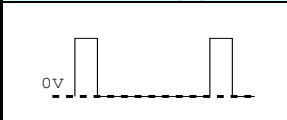
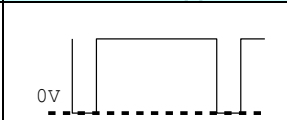
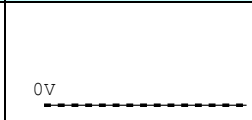
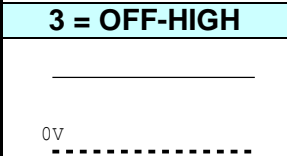
	0 ~ 15000, 1/step	設定 Timing 的 Hdisplay 數值
<b>Hb-porch</b>	水平後廊：H back porch 是表示由水平同步信號結束，一直到 Hdisplay 的開始部份所佔的時間	
	0 ~ 8190, 1/step	設定 Timing 的 Hb-porch 數值(不支援奇數點設定)
<b>Hsync</b>	水平同步信號寬度：代表水平同步信號的寬度時間	
	8 ~ 8176, 1/step	設定 Timing 的 Hsync 數值(不支援奇數點設定)
<b>Hborder</b>	水平外緣：一般之標準信號均沒有此部份，只有一些特殊機種才能在顯像時間之前後對稱地增加一小段外緣以顯示更多的畫面	
	0	顯示 Timing 的 Hborder 數值
<b>Hsize</b>	設定螢幕水平的尺寸或解析度比率(與 Vsize 配合)	
	0.01 ~ 999.999 mm	設定 Timing 的 Hsize 數值
<b>Vtotal</b>	垂直時間：代表一個完整的垂直圖場 (Field) 時間	
	4 ~ 10000, 1/step	設定 Timing 的 Vtotal 數值
<b>Vdisplay</b>	垂直顯像時間：垂直方向的顯像時間	
	0 ~ 10000, 1/step	設定 Timing 的 Vdisplay 數值
<b>Vb-porch</b>	垂直後廊 V back porch 是由垂直同步信號結束，直到 Vdisplay 開始的時間	
	0 ~ 2160, 1/step	設定 Timing 的 Vb-porch 數值
<b>Vsync</b>	垂直同步信號寬度：代表垂直同步信號的寬度時間	
	1 ~ 2160, 1/step	設定 Timing 的 Vsync 數值
<b>Vborder</b>	垂直外緣一般之標準信號均沒有此部份，只有一些特殊機種才能在顯像時間之前後對稱地增加一小段外緣以顯示更多的畫面	
	0	顯示 Timing 的 Vborder 數值
<b>Vsize</b>	設定螢幕垂直的尺寸或解析度比率(與 Hsize 配合)	
	0.01 ~ 999.999 mm	設定 Timing 的 Vsize 數值
<b>H SYNC OUT</b>	H 同步信號參數邏輯設定 * 相關設定請參照註解 1	
	ON (+)	設定為 ON (+) 邏輯
	ON (-)	設定為 ON (-) 邏輯
	OFF-LOW	設定為 OFF-LOW 邏輯
	OFF-HIGH	設定為 OFF- HIGH 邏輯
<b>X SYNC OUT</b>	複合式同步信號參數邏輯設定 * 相關設定請參照註解 1	
	ON (+)	設定為 ON (+) 邏輯
	ON (-)	設定為 ON (-) 邏輯
	OFF-LOW	設定為 OFF-LOW 邏輯
	OFF-HIGH	設定為 OFF- HIGH 邏輯
<b>V SYNC OUT</b>	V 同步信號參數邏輯設定 * 相關設定請參照註解 1	
	ON (+)	設定為 ON (+) 邏輯
	ON (-)	設定為 ON (-) 邏輯
	OFF-LOW	設定為 OFF-LOW 邏輯
	OFF-HIGH	設定為 OFF- HIGH 邏輯
<b>X SYNC</b>	XS 信號中 HS & VS 的邏輯組合設定	

<b>SEL</b>	* 相關設定請參照註解 2	
	H	設定為 H 邏輯組合
	V	設定為 V 邏輯組合
	H+V	設定為 H+V 邏輯組合
	H EOR V	設定為 H EOR V 邏輯組合
	SERR+EQP	設定為 SERR+EQP 邏輯組合
	0.5 H	設定為 0.5 H 邏輯組合
	TRI 1080	設定為 TRI 1080 邏輯組合
<b>COLOR SPACE</b>	選擇 RGB 信號或 YCbCr 訊號 * 相關說明請參照註解 3	
	RGB	設定為 RGB 信號
	ITU-601	設定為 ITU-601 訊號
	BT2020 YCbCr	設定為 BT2020 YCbCr
<b>COLOR DEPTH</b>	選擇色彩深度 * 相關說明請參照註解 4	
	8	設定 8 bit Depth
	10	設定 10 bit Depth
	12	設定 12 bit Depth
<b>AV MUTE</b>	選擇是否要對 DTV 傳送 General Control Packet	
	Enable / Disable	啟動 / 關閉 HDMI AV Mute
<b>PIXEL MODE</b>	當選擇 YCbCr 訊號時指示色彩信號編碼方式 * 相關說明請參照註解 5	
	4:4:4	設定為 4:4:4 模式
	4:2:2	設定為 4:2:2 模式
	4:2:0	設定為 4:2:0 模式(視情況選項)
<b>PRG. HDCP ENABLE</b>	選擇在 program Run 時指示是否執行 HDCP 功能	
	Enable / Disable	啟動 / 關閉 PRG. HDCP 功能
<b>HDCP VERSION</b>	選擇執行 HDCP 版本	
	AUTO	選擇 AUTO 模式
	1.4	設定為 HDCP 1.4
	2.3 type 0	設定為 HDCP 2.3 type 0
<b>IMAGE DIVISION</b>	選擇圖形分割模式	
	1x1	設定為整張圖輸出
	2x2	設定為 4 個區塊由 4 port 輸出 左上角由 port 1 輸出，右上角由 port 2 輸出 左下角由 port 3 輸出，右下角由 port 4 輸出
<b>3D TYPE</b>	設定輸出 Timing 採用的 3D 類型	
	DISABLED	選擇關閉 3D 模式
	TOP_BOTTOM	設定為 TOP_BOTTOM 模式
	SIDE_HALF	設定為 SIDE_HALF 模式
<b>PRG. HDR ENABLE</b>	Program Run 時,指示是否執行 HDR 功能	
	Enable / Disable	啟動 / 關閉 PRG. HDR 功能

<b>PRG. HDR EOTF</b>	當 PRG.HDR ENABLE 選擇啟動設定時,選擇 EOTF 模式	
	SDR RANGE	設定 HDR EOTF 為 SDR Range (00)
	HDR RANGE	設定 HDR EOTF 為 HDR Range (01)
	SMPTE ST 2084	設定 HDR EOTF 為 SMPTE ST2084 (02)
	HLG	設定 HDR EOTF 為 HLG (03)
<b>INFO DISABLE</b>	一般正常 Timing 都會輸出 Infoframe, 除非設定 Yes 才不會送	
	Enable / Disable	關閉/啟動 Infoframe 功能
<b>HDR No</b>	Program Run 時, 選擇執行 HDR 號碼組	
	0 ~ 99	選擇 HDR 號碼組
<b>HDMI SCRAMBLE</b>	選擇 HDMI Scramble 輸出	
	AUTO	設定為 AUTO
	ON	設定為 ON
	OFF	設定為 OFF
<b>SCAN MODE</b>	設定 “Scan mode” of Auxiliary Video information InfoFrame 控制旗標輸出	
	NONE	告知 DTV 目前的 Video Format 應使用 NONE 顯示
	OVER	設定 Over Scan 顯示
	UNDER	設定 Under Scan 顯示
	RES.	保留
<b>YC TO RGB</b>	指示是否要將色差訊號轉換成 RGB 信號輸出, 以模擬 DVD Player 將 MPEG 解壓縮後以 RGB 模式輸出影像資料	
	OFF	不要以 RGB 模式輸出
	LIMITED	轉換後 RGB Range = 16 ~ 235
	FULL	轉換後 RGB Range = 0 ~ 255
<b>INFO GROUP</b>	20 組 User 自訂的 InfoFrames, 每組包含 Auxiliary Video、Audio、Source Product Description、MPEG 等 4 種 CEA-861D InfoFrame 以及 Generic 1、Generic 2 兩組萬用 InfoFrame * 相關說明請參照註解 6	
	SYSTEM	當選擇 SYSTEM 時會根據所選擇的 Timing Format 與 Audio Format 設定 Auxiliary Video、Audio InfoFrame
	USER1~20	使用者自訂的 InfoFrames
<b>FRL</b>	設定 FRL 模式	
	DISABLED	關閉 FRL 模式, 以 TMDS 模式進行輸出
	3Gb/3L	設定為 3Gb/3L
	6Gb/3L	設定為 6Gb/3L
	6Gb/4L	設定為 6Gb/4L
	8Gb/4L	設定為 8Gb/4L
	10Gb/4L	設定為 10Gb/4L
	12Gb/4L	設定為 12Gb/4L
	DSC3G/3L	設定為 DSC3G/3L
	DSC6G/3L	設定為 DSC6G/3L
	DSC6G/4L	設定為 DSC6G/4L
	DSC8G/4L	設定為 DSC8G/4L

	DSC10G/4L	設定為 DSC10G/4L
	DSC12G/4L	設定為 DSC12G/4L
<b>ASPECT RATIO</b>	設定 “Aspect Ratio” of Auxiliary Video information InfoFrame 控制旗標輸出	
	NONE	告知 DTV 目前的 Video Format 使用 NONE 顯示
	4:3	設定為 4:3 比率
	16:9	設定為 16:9 比率
	RESV.	保留
	64:27	設定為 64:27 比率
	256:135	設定為 256:135 比率
<b>PIXEL REPEAT</b>	指示資料重複輸出的次數 * 相關說明請參照註解 7	
	1	選擇一個 pixel data 傳送 1 次
	2	選擇同一個 pixel data 要傳送 2 次
	3	選擇同一個 pixel data 要傳送 3 次
	4	選擇同一個 pixel data 要傳送 4 次
<b>IT CONTENT</b>	選擇 IT CONTENT	
	NO DATA	選擇 NO DATA
	GRAPHICS	選擇 GRAPHICS
	PHOTO	選擇 PHOTO
	CINEMA	選擇 CINEMA
	GAME	選擇 GAME
<b>EDID CHECK</b>	選擇 EDID CHECK 功能	
	Enable / Disable	啟動 / 關閉 EDID CHECK 功能
<b>HEX DATA</b>	設定 SMART I/O 輸出信號	
	0 ~ FFFF	可輸入 16 進制數值

## \* 註解 1

0 = ON(+)	1 = ON(-)	2 = OFF-LOW
		
3 = OFF-HIGH		
		

## \* 註解 2

- XS SELECT：指示此 Timing 中 XS 信號中 HS&VS 的邏輯組合為何。

選項	說明
0	HS
1	VS VSYNC WIDTH
2	HS + VS
3	HS EXOR VS
4	SERR NON-INTERLACED SERR INTERLACED

- XS SELECT : 當 XS SELECT 為 3D SYNC 指示此 Timing 中 XS 信號為何。

選項	說明
0	3D VIDEO LEFT = BLACK RIGHT = WHITE
	LEFT = LOW RIGHT = HIGH
1	LEFT = HIGH RIGHT = LOW

\* 註解 3

- COLOR SPACE : 選擇 YCbCr 訊號或是 RGB 信號

選項	說明
RGB	不轉換色域
ITU-601	請參考 ITU-R BT.601-5 Section 3.5
ITU-709	請參考 ITU-R BT.709-5 Part 1 Section 4
BT2020 YCbCr	請參考 ITU-R BT.2020-2

其轉換公式如下：

**ITU-601 Format:** ( R 、 G 、 B has a range of 0 ~ 255 )

$$Y = 0.257R + 0.504G + 0.098B + 16$$

$$Cb = -0.148R - 0.291G + 0.439B + 128$$

$$Cr = 0.439R - 0.368G - 0.071B + 128$$

**ITU-709 Format:** ( R 、 G 、 B has a range of 0 ~ 255 )

$$Y = 0.183R + 0.614G + 0.062B + 16$$

$$Cb = -0.101R - 0.338G + 0.439B + 128$$

$$Cr = 0.439R - 0.399G - 0.040B + 128$$

**BT2020 YCbCr Format:** ( R、G、B has a range of 0 ~ 255 )

$$Y = 0.226R + 0.583G + 0.051B + 16$$

$$Cb = -0.123R - 0.316G + 0.439B + 128$$

$$Cr = 0.439R - 0.404G - 0.035B + 128$$

## \* 註解 4

- DEEP COLOR：是否使用 Deep Color Packing 輸出 8/10/12 bit 影像資料。

選項	說明
8	clock = 1.00 * pixel clock, 1 fragments / group=1 pixels / group (1:1)
10	clock = 1.25 * pixel clock, 5 fragments / group=4 pixels / group (5:4)
12	clock = 1.50 * pixel clock, 3 fragments / group=2 pixels / group (3:2)

 提示

當使用 Deep Color Packing 時，影像時脈將會提升，且影像資料將被重新封包。

## \* 註解 5

- PIXEL MODE：當輸出 YCbCr 訊號時指示輸出之 YCbCr 色彩信號編碼方式

 提示

- YCbCr 介紹：在目前消費性視訊產品中如 DVD 播放器、數位攝影機、數位電視機等，常用的信號編碼方式是 YCbCr，其中 Y 是指圖像中的亮度，Cb 與 Cr 是指圖像中色彩向量。人的視覺對圖像的 Y 分量較敏感，因此在通過對色彩進行 Sub-sampling 來減少色彩後，肉眼將察覺不到圖像質量的變化。目前標準的 Sub-sampling 主要的格式有 YCbCr 4:2:0、YCbCr 4:2:2 和 YCbCr 4:4:4(VPG 提供支援 4:2:2 及 4:4:4 兩種格式)。
- YCbCr 4:2:0 介紹：表示每 4 個像素有 4 個亮度，只有 2 個色彩“YYYYCbCr”。僅採樣奇數掃描線，是攜帶型視訊設備(MPEG-4)以及電視會議(H.263)最常用格式。
- YCbCr 4:2:2 介紹：表示每 4 個像素有 4 個亮度，只有 4 個色度“YYYYCbCrCbCr”。DVD、數位電視、HDTV 以及其他消費性視訊設的最常用格式。
- YCbCr 4:4:4 介紹：表示未將任何顏色資料去除“YYYYCbCrCbCrCbCrCbCr”。用於高質量視頻應用、演播室以及專業視頻產品。

## \* 註解 6

- 如 Timing #610 CEA-1920X1080i-60，預設的 AVI data：

BYTE	DATA	Description
HB0	0x82	AVI Type Code
HB1	0x02	AVI Info Frame Version
HB2	0x0d	Data length
PB0	0x7e	Check sum
PB1	0x41	Over scan mode YCbCr 4:4:4 data encoding Non Active Format

		Active bar data not valid
PB2	0xA8	ITU-709 color space Picture aspect ratio 16:9 Active format same as picture aspect ratio
PB3	0x03	Picture has been scaled by H,V
PB4	0x05	CEA video identification code
PB5	0x00	No pixel repetition
PB6	0x00	Active bar Info (bar data not valid)
PB7	0x00	Active bar Info (bar data not valid)
PB8	0x00	Active bar Info (bar data not valid)
PB9	0x00	Active bar Info (bar data not valid)
PB10	0x00	Active bar Info (bar data not valid)
PB11	0x00	Active bar Info (bar data not valid)
PB12	0x00	Active bar Info (bar data not valid)
PB13	0x00	Active bar Info (bar data not valid)

- Basic Audio (2 Channel) , 預設的 AUDIO data:

BYTE	DATA	Description
HB0	0x84	AUDIO Type Code
HB1	0x01	AUDIO Info Frame Version
HB2	0x0a	Data length
PB0	0x53	Check sum
PB1	0x11	Audio Coding Type: IEC60958 PCM 2 Channel
PB2	0x0D	48KHz sample rate 16 bits sample size
PB3	0x00	Coding type information
PB4	0x00	Speaker placement: R,L
PB5	0x00	0 dB Level shift
PB6	0x00	Reserved
PB7	0x00	Reserved
PB8	0x00	Reserved
PB9	0x00	Reserved
PB10	0x00	Reserved

\* 註解 7

- PIXEL REPEAT: 指示資料重複輸出的次數



選項	說明
1	
2	
3	
4	

提示

當使用如 480i 的 Timing，其 PIXEL\_RATE=13.5Mhz 而可能無法支援目前接收端晶片的規格，因此利用 PIXEL\_RATE 乘上一個倍數，而影像資料方面則是重複輸出 PIXEL\_RATE 所乘上的倍數已達到，所以 480i 將乘以 2 倍 (13.5Mhz \* 2 = 27Mhz) 而資料重複輸出 2 次。



# 附錄 A A223805 Default Timing List

以下僅列出 A223805 HDMI 2.1 信號模組支援之 TIMING 列表，若需要確認完整的 TIMING TABLE，請參考 2238 主機使用手冊。

No.	Classification
601 ~ 800	CTA-861-G Timing



1. 舊款型號(非 2238) 的 Timing 必須利用 VPGMaster 軟體,轉換後才能使用在本機。
2. 2238 架構支援多模組獨立輸出但並非所有的 Timing 都可以支援所有模組，可輸出的對照列表請參考以下兩個表格:

## TIMING 601-800 CTA-861 - G Timing

CTA-861-G Timing																
Timing	Timing Name	Pixel Rate (M)	Htotal	Hdisplay	Hbp	Hsw	Hf (K)	Vtotal	Vdisplay	Vbp	Vsw	Vf	HSync	VSync	H:Vsize	
601(01)	CTA-640X480P-59 4:3	25.175	800	640	48	96	31.469	525	480	33	2	59.94	ON(-)	ON(-)	4:3	
602(01)	CTA-640X480P-60 4:3	25.200	800	640	48	96	31.500	525	480	33	2	60.00	ON(-)	ON(-)	4:3	
603(02)	CTA-720X480P-59 4:3	27.000	858	720	60	62	31.469	525	480	30	6	59.94	ON(-)	ON(-)	4:3	
604(02)	CTA-720X480P-60 4:3	27.027	858	720	60	62	31.500	525	480	30	6	60.00	ON(-)	ON(-)	4:3	
605(03)	CTA-720X480P-59 16:9	27.000	858	720	60	62	31.469	525	480	30	6	59.94	ON(-)	ON(-)	16:9	
606(03)	CTA-720X480P-60 16:9	27.027	858	720	60	62	31.500	525	480	30	6	60.00	ON(-)	ON(-)	16:9	
607(04)	CTA-1280X720P-59 16:9	74.175	1650	1280	220	40	44.955	750	720	20	5	59.94	ON(+)	ON(+)	16:9	
608(04)	CTA-1280X720P-60 16:9	74.250	1650	1280	220	40	45.000	750	720	20	5	60.00	ON(+)	ON(+)	16:9	
609(05)	CTA-1920X1080i-59 16:9	74.175	2200	1920	148	44	33.716	562	540	15	5	59.94	ON(+)	ON(+)	16:9	
610(05)	CTA-1920X1080i-60 16:9	74.250	2200	1920	148	44	33.750	562	540	15	5	60.00	ON(+)	ON(+)	16:9	
611(06)	CTA-1440X480i-59 4:3	13.500*2	858*2	720*2	57*2	62*2	15.734	262	240	15	3	59.94	ON(-)	ON(-)	4:3	
612(06)	CTA-1440X480i-60 4:3	13.513*2	858*2	720*2	57*2	62*2	15.749	262	240	15	3	60.00	ON(-)	ON(-)	4:3	
613(07)	CTA-1440X480i-59 16:9	13.500*2	858*2	720*2	57*2	62*2	15.734	262	240	15	3	59.94	ON(-)	ON(-)	16:9	
614(07)	CTA-1440X480i-60 16:9	13.513*2	858*2	720*2	57*2	62*2	15.749	262	240	15	3	60.00	ON(-)	ON(-)	16:9	
615(08)	CTA-1440X 240P-59 4:3	13.500*2	858*2	720*2	57*2	62*2	15.734	263	240	15	3	59.83	ON(-)	ON(-)	4:3	
616(08)	CTA-1440X 240P-60 4:3	13.513*2	858*2	720*2	57*2	62*2	15.749	263	240	15	3	59.88	ON(-)	ON(-)	4:3	
617(09)	CTA-1440X 240P-59 16:9	13.500*2	858*2	720*2	57*2	62*2	15.734	263	240	15	3	59.83	ON(-)	ON(-)	16:9	
618(09)	CTA-1440X 240P-60 16:9	13.513*2	858*2	720*2	57*2	62*2	15.749	263	240	15	3	59.88	ON(-)	ON(-)	16:9	
619(10)	CTA-2880X480i-59 4:3	13.500*4	858*4	720*4	57*4	62*4	15.734	262	240	15	3	59.94	ON(-)	ON(-)	4:3	
620(10)	CTA-2880X480i-60 4:3	13.513*4	858*4	720*4	57*4	62*4	15.749	262	240	15	3	60.00	ON(-)	ON(-)	4:3	
621(11)	CTA-2880X480i-59 16:9	13.500*4	858*4	720*4	57*4	62*4	15.734	262	240	15	3	59.94	ON(-)	ON(-)	16:9	
622(11)	CTA-2880X480i-60 16:9	13.513*4	858*4	720*4	57*4	62*4	15.749	262	240	15	3	60.00	ON(-)	ON(-)	16:9	
623(12)	CTA-2880X240P-59 4:3	13.500*4	858*4	720*4	57*4	62*4	15.734	263	240	15	3	59.83	ON(-)	ON(-)	4:3	
624(12)	CTA-2880X240P-60 4:3	13.513*4	858*4	720*4	57*4	62*4	15.749	263	240	15	3	59.88	ON(-)	ON(-)	4:3	
625(13)	CTA-2880X240P-59 16:9	13.500*4	858*4	720*4	57*4	62*4	15.734	263	240	15	3	59.83	ON(-)	ON(-)	16:9	
626(13)	CTA-2880X240P-60 16:9	13.513*4	858*4	720*4	57*4	62*4	15.749	262	240	15	3	60.11	ON(-)	ON(-)	16:9	
627(14)	CTA-1440X480P-59 4:3	27.000*2	858*2	720*2	60*2	62*2	31.469	525	480	30	6	59.94	ON(-)	ON(-)	4:3	
628(14)	CTA-1440X480P-60 4:3	27.027*2	858*2	720*2	60*2	62*2	31.500	525	480	30	6	60.00	ON(-)	ON(-)	4:3	
629(15)	CTA-1440X480P-59 16:9	27.000*2	858*2	720*2	60*2	62*2	31.469	525	480	30	6	59.94	ON(-)	ON(-)	16:9	
630(15)	CTA-1440X480P-60 16:9	27.027*2	858*2	720*2	60*2	62*2	31.500	525	480	30	6	60.00	ON(-)	ON(-)	16:9	
631(16)	CTA-1920X1080P-59 16:9	148.350	2200	1920	148	44	67.432	1125	1080	36	5	59.94	ON(+)	ON(+)	16:9	
632(16)	CTA-1920X1080P-60 16:9	148.500	2200	1920	148	44	67.500	1125	1080	36	5	60.00	ON(+)	ON(+)	16:9	
633(17)	CTA-720X576P-50 4:3	27.000	864	720	68	64	31.250	625	576	39	5	50.00	ON(-)	ON(-)	4:3	
634(18)	CTA-720X576P-50 16:9	27.000	864	720	68	64	31.250	625	576	39	5	50.00	ON(-)	ON(-)	16:9	
635(19)	CTA-1280X720P-50 16:9	74.250	1980	1280	220	40	37.500	750	720	20	5	50.00	ON(+)	ON(+)	16:9	
636(20)	CTA-1920X1080i-50 16:9	74.250	2640	1920	148	44	28.125	562	540	15	5	50.00	ON(+)	ON(+)	16:9	
637(21)	CTA-1440X576i-50 4:3	13.500*2	864*2	720*2	69*2	63*2	15.625	312	288	19	3	50.00	ON(-)	ON(-)	4:3	
638(22)	CTA-1440X576i-50 16:9	13.500*2	864*2	720*2	69*2	63*2	15.625	312	288	19	3	50.00	ON(-)	ON(-)	16:9	
639(23)	CTA-1440X288P-50 4:3	13.500*2	864*2	720*2	69*2	63*2	15.625	312	288	19	3	50.08	ON(-)	ON(-)	4:3	
640(24)	CTA-1440X288P-50 16:9	13.500*2	864*2	720*2	69*2	63*2	15.625	312	288	19	3	50.08	ON(-)	ON(-)	16:9	
641(25)	CTA-2880X576i-50 4:3	13.500*4	864*4	720*4	69*4	63*4	15.625	312	288	19	3	50.00	ON(-)	ON(-)	4:3	
642(26)	CTA-2880X576i-50 16:9	13.500*4	864*4	720*4	69*4	63*4	15.625	312	288	19	3	50.00	ON(-)	ON(-)	16:9	
643(27)	CTA-2880X288P-50 4:3	13.500*4	864*4	720*4	69*4	63*4	15.625	312	288	19	3	50.08	ON(-)	ON(-)	4:3	
644(28)	CTA-2880X288P-50 16:9	13.500*4	864*4	720*4	69*4	63*4	15.625	312	288	19	3	50.08	ON(-)	ON(-)	16:9	
645(29)	CTA-1440X576P-50 4:3	27.000*2	864*2	720*2	68*2	64*2	31.250	625	576	39	5	50.00	ON(-)	ON(-)	4:3	

# HDMI 2.1 信號模組 A223805 使用手冊

646(30)	CTA-1440X576P-50 16:9	27.000*2	864*2	720*2	68*2	64*2	31.250	625	576	39	5	50.00	ON(-)	ON(-)	16:9
647(31)	CTA-1920X1080P-50 16:9	148.500	2640	1920	148	44	56.250	1125	1080	36	5	50.00	ON(+)	ON(+)	16:9
648(32)	CTA-1920X1080P-23 16:9	74.175	2750	1920	148	44	26.973	1125	1080	36	5	23.98	ON(+)	ON(+)	16:9
649(32)	CTA-1920X1080P-24 16:9	74.250	2750	1920	148	44	27.000	1125	1080	36	5	24.00	ON(+)	ON(+)	16:9
650(33)	CTA-1920X1080P-25 16:9	74.250	2640	1920	148	44	28.125	1125	1080	36	5	25.00	ON(+)	ON(+)	16:9
651(34)	CTA-1920X1080P-29 16:9	74.175	2200	1920	148	44	33.716	1125	1080	36	5	29.97	ON(+)	ON(+)	16:9
652(34)	CTA-1920X1080P-30 16:9	74.250	2200	1920	148	44	33.750	1125	1080	36	5	30.00	ON(+)	ON(+)	16:9
653(35)	CTA-2880x480P-60 4:3	27.027*4	858*4	720*4	60*4	62*4	31.500	525	480	30	6	60.00	ON(-)	ON(-)	4:3
654(36)	CTA-2880x480P-60 16:9	27.027*4	858*4	720*4	60*4	62*4	31.500	525	480	30	6	60.00	ON(-)	ON(-)	16:9
655(37)	CTA-2880x576P-50 4:3	27.000*4	864*4	720*4	68*4	64*4	31.250	625	576	39	5	50.00	ON(-)	ON(-)	4:3
656(38)	CTA-2880x576P-50 16:9	27.000*4	864*4	720*4	68*4	64*4	31.250	625	576	39	5	50.00	ON(-)	ON(-)	16:9
657(39)	CTA-1920X1080i-50 16:9	72.000	2304	1920	184	168	31.250	625	540	57	5	49.96	ON(+)	ON(+)	16:9
658(40)	CTA-1920X1080i-100 16:9	148.500	2640	1920	148	44	56.250	562	540	15	5	100.0	ON(+)	ON(+)	16:9
659(41)	CTA-1280X720P-100 16:9	148.500	1980	1280	220	40	75.000	750	720	20	5	100.0	ON(+)	ON(+)	16:9
660(42)	CTA-720X576P-100 4:3	54.000	864	720	68	64	62.500	625	576	39	5	100.0	ON(-)	ON(-)	4:3
661(43)	CTA-720X576P-100 16:9	54.000	864	720	68	64	62.500	625	576	39	5	100.0	ON(-)	ON(-)	16:9
662(44)	CTA-720X576i-100 4:3	27.000	864	720	69	63	31.250	312	288	19	3	100.0	ON(-)	ON(-)	4:3
663(45)	CTA-720X576i-100 16:9	27.000	864	720	69	63	31.250	312	288	19	3	100.0	ON(-)	ON(-)	16:9
664(46)	CTA-1920X1080i-120 16:9	148.500	2200	1920	148	44	67.500	562	540	15	5	120.0	ON(+)	ON(+)	16:9
665(47)	CTA-1280X720P-120 16:9	148.500	1650	1280	220	40	90.000	750	720	20	5	120.0	ON(+)	ON(+)	16:9
666(48)	CTA-720X480P-120 4:3	54.054	858	720	60	62	63.000	525	480	30	6	120.0	ON(-)	ON(-)	4:3
667(49)	CTA-720X480P-120 16:9	54.054	858	720	60	62	63.000	525	480	30	6	120.0	ON(-)	ON(-)	16:9
668(50)	CTA-720X480i-120 4:3	27.027	858	720	57	62	31.500	262	240	15	3	120.0	ON(-)	ON(-)	4:3
669(51)	CTA-720X480i-120 16:9	27.027	858	720	57	62	31.500	262	240	15	3	120.0	ON(-)	ON(-)	16:9
670(52)	CTA-720X576P-200 4:3	108.000	864	720	68	64	125.000	625	576	39	5	200.0	ON(-)	ON(-)	4:3
671(53)	CTA-720X576P-200 16:9	108.000	864	720	68	64	125.000	625	576	39	5	200.0	ON(-)	ON(-)	16:9
672(54)	CTA-720X576i-200 4:3	54.000	864	720	69	63	62.500	312	288	19	3	200.0	ON(-)	ON(-)	4:3
673(55)	CTA-720X576i-200 16:9	54.000	864	720	69	63	62.500	312	288	19	3	200.0	ON(-)	ON(-)	16:9
674(56)	CTA-720X480P-240 4:3	108.108	858	720	60	62	126.000	525	480	30	6	240.0	ON(-)	ON(-)	4:3
675(57)	CTA-720X480P-240 16:9	108.108	858	720	60	62	126.000	525	480	30	6	240.0	ON(-)	ON(-)	16:9
676(58)	CTA-720X480i-240 4:3	54.054	858	720	57	62	63.000	262	240	15	3	240.0	ON(-)	ON(-)	4:3
677(59)	CTA-720X480i-240 16:9	54.054	858	720	57	62	63.000	262	240	15	3	240.0	ON(-)	ON(-)	16:9
678(60)	CTA-1280X720P-24 16:9	59.4	3300	1280	220	40	18	750	720	20	5	24	ON(+)	ON(+)	16:9
679(61)	CTA-1280X720P-25 16:9	74.25	3960	1280	220	40	18.75	750	720	20	5	25	ON(+)	ON(+)	16:9
680(62)	CTA-1280X720P-30 16:9	74.25	3300	1280	220	40	22.5	750	720	25	5	30	ON(+)	ON(+)	16:9
681(64)	CTA-1920X1080P-100 16:9	297.000	2640	1920	148	44	112.500	1125	1080	36	5	100.0	ON(+)	ON(+)	16:9
682(63)	CTA-1920X1080P-120 16:9	297.000	2200	1920	148	44	135.000	1125	1080	36	5	120.0	ON(+)	ON(+)	16:9
683(0)	HDMI-3840x2160-23 16:9	296.703	5500	3840	296	88	53.946	2250	2160	72	10	23.976	ON(+)	ON(+)	16:9
684(0)	HDMI-3840x2160-24 16:9	297.000	5500	3840	296	88	54	2250	2160	72	10	24.00	ON(+)	ON(+)	16:9
685(0)	HDMI-3840x2160-25 16:9	297.000	5280	3840	296	88	56.25	2250	2160	72	10	25.00	ON(+)	ON(+)	16:9
686(0)	HDMI-3840x2160-29 16:9	296.703	4400	3840	296	88	67.43	2250	2160	72	10	29.970	ON(+)	ON(+)	16:9
687(0)	HDMI-3840x2160-30 16:9	297.000	4400	3840	296	88	67.5	2250	2160	72	10	30.00	ON(+)	ON(+)	16:9
688(0)	SMPTTE-4096x2160-24 16:9	297.000	5500	4096	296	88	54	2250	2160	72	10	24.00	ON(+)	ON(+)	256:135
689(65)	CTA-1280x720p-24 64:27	59.4	3300	1280	220	40	18	750	720	20	5	23.98	ON(+)	ON(+)	64:27
690(66)	CTA-1280x720p-25 64:27	74.25	3960	1280	220	40	18.75	750	720	20	5	25	ON(+)	ON(+)	64:27
691(67)	CTA-1280x720p-30 64:27	74.25	3300	1280	220	40	22.5	750	720	20	5	29.97	ON(+)	ON(+)	64:27
692(68)	CTA-1280x720p-50 64:27	74.25	1980	1280	220	40	37.5	750	720	20	5	50	ON(+)	ON(+)	64:27
693(69)	CTA-1280x720p-60 64:27	74.25	1650	1280	220	40	45	750	720	20	5	59.94	ON(+)	ON(+)	64:27
694(70)	CTA-1280x720p-100 64:27	148.5	1980	1280	220	40	75	750	720	20	5	100	ON(+)	ON(+)	64:27
695(71)	CTA-1280x720p-120 64:27	148.5	1650	1280	220	40	90	750	720	20	5	119.88	ON(+)	ON(+)	64:27
696(72)	CTA-1920x1080p-24 64:27	74.25	2750	1920	148	44	27	1125	1080	36	5	23.98	ON(+)	ON(+)	64:27
697(73)	CTA-1920x1080p-25 64:27	74.25	2640	1920	148	44	28.125	1125	1080	36	5	25	ON(+)	ON(+)	64:27
698(74)	CTA-1920x1080p-30 64:27	74.25	2200	1920	148	44	33.75	1125	1080	36	5	29.97	ON(+)	ON(+)	64:27
699(75)	CTA-1920x1080p-50 64:27	148.5	2640	1920	148	44	56.25	1125	1080	36	5	50	ON(+)	ON(+)	64:27
700(76)	CTA-1920x1080p-60 64:27	148.5	2200	1920	148	44	67.5	1125	1080	36	5	59.94	ON(+)	ON(+)	64:27
701(77)	CTA-1920x1080-100 64:27	297	2640	1920	148	44	112.5	1125	1080	36	5	100	ON(+)	ON(+)	64:27
702(78)	CTA-1920x1080-120 64:27	297	2200	1920	148	44	135	1125	1080	36	5	119.88	ON(+)	ON(+)	64:27
703(79)	CTA-1680x720p-24 64:27	59.4	3300	1680	220	40	18	750	720	20	5	23.98	ON(+)	ON(+)	64:27
704(80)	CTA-1680x720p-25 64:27	59.4	3168	1680	220	40	18.75	750	720	20	5	25	ON(+)	ON(+)	64:27
705(81)	CTA-1680x720p-30 64:27	59.4	2640	1680	220	40	22.5	750	720	20	5	29.97	ON(+)	ON(+)	64:27
706(82)	CTA-1680x720p-50 64:27	82.5	2200	1680	220	40	37.5	750	720	20	5	50	ON(+)	ON(+)	64:27
707(83)	CTA-1680x720p-60 64:27	99	2200	1680	220	40	45	750	720	20	5	59.94	ON(+)	ON(+)	64:27
708(84)	CTA-1680x720p-100 64:27	165	2000	1680	220	40	82.5	825	720	95	5	100	ON(+)	ON(+)	64:27
709(85)	CTA-1680x720p-120 64:27	198	2000	1680	220	40	99	825	720	95	5	119.88	ON(+)	ON(+)	64:27
710(86)	CTA-2560x1080p-24 64:27	99	3750	2560	148	44	26.4	1100	1080	11	5	23.98	ON(+)	ON(+)	64:27
711(87)	CTA-2560x1080p-25 64:27	90	3200	2560	148	44	28.125	1125	1080	36	5	25	ON(+)	ON(+)	64:27
712(88)	CTA-2560x1080p-30 64:27	118.8	3520	2560	148	44	33.75	1125	1080	36	5	29.97	ON(+)	ON(+)	64:27
713(89)	CTA-2560x1080p-50 64:27	185.625	3300	2560	148	44	56.25	1125	1080	36	5	50	ON(+)	ON(+)	64:27
714(90)	CTA-2560x1080p-60 64:27	198	3000	2560	148	44	66	1100	1080	11	5	59.94	ON(+)	ON(+)	64:27

## 附錄 A A223805 Default Timing List

717(93)	CTA-3840x2160-24	16:9	297	5500	3840	296	88	54	2250	2160	72	10	23.98	ON(+)	ON(+)	16:9
718(94)	CTA-3840x2160-25	16:9	297	5280	3840	296	88	56.25	2250	2160	72	10	25	ON(+)	ON(+)	16:9
719(95)	CTA-3840x2160-30	16:9	297	4400	3840	296	88	67.5	2250	2160	72	10	29.97	ON(+)	ON(+)	16:9
720(96)	CTA-3840x2160-50	16:9	594	5280	3840	296	88	112.5	2250	2160	72	10	50	ON(+)	ON(+)	16:9
721(97)	CTA-3840x2160-60	16:9	594	4400	3840	296	88	135	2250	2160	72	10	59.94	ON(+)	ON(+)	16:9
722(98)	CTA-4096x2160-24	256:135	297	5500	4096	296	88	54	2250	2160	72	10	23.98	ON(+)	ON(+)	256:135
723(99)	CTA-4096x2160-25	256:135	297	5280	4096	128	88	56.25	2250	2160	72	10	25	ON(+)	ON(+)	256:135
724(100)	CTA-4096x2160-30	256:135	297	4400	4096	128	88	67.5	2250	2160	72	10	29.97	ON(+)	ON(+)	256:135
725(101)	CTA-4096x2160-50	256:135	594	5280	4096	128	88	112.5	2250	2160	72	10	50	ON(+)	ON(+)	256:135
726(102)	CTA-4096x2160-60	256:135	594	4400	4096	128	88	135	2250	2160	72	10	59.94	ON(+)	ON(+)	256:135
727(103)	CTA-3840x2160-23	64:27	297	5500	3840	296	88	54	2250	2160	72	10	23.98	ON(+)	ON(+)	64:27
728(104)	CTA-3840x2160-24	64:27	297	5280	3840	296	88	56.25	2250	2160	72	10	25	ON(+)	ON(+)	64:27
729(105)	CTA-3840x2160-29	64:27	297	4400	3840	296	88	67.5	2250	2160	72	10	29.97	ON(+)	ON(+)	64:27
730(106)	CTA-3840x2160-50	64:27	594	5280	3840	296	88	112.5	2250	2160	72	10	50	ON(+)	ON(+)	64:27
731(107)	CTA-3840x2160-60	64:27	594	4400	3840	296	88	135	2250	2160	72	10	59.94	ON(+)	ON(+)	64:27
732	CTA-7680x4320-60	64:27	2376	8800	7680	592	176	270	4500	4320	144	20	59.94	ON(+)	ON(+)	64:27
733(108)	CTA-1280x720-48		90	2500	1280	220	40	36	750	720	20	5	48	ON(+)	ON(+)	16:9
734(109)	CTA-1280x720-48		90	2500	1280	220	40	36	750	720	20	5	48	ON(+)	ON(+)	64:27
735(110)	CTA-1680x720-48		99	2750	1680	220	40	36	750	720	20	5	48	ON(+)	ON(+)	64:27
736(111)	CTA-1920x1080-48		148.5	2750	1920	148	44	54	1125	1080	36	5	48	ON(+)	ON(+)	16:9
737(112)	CTA-1920x1080-48		148.5	2750	1920	148	44	54	1125	1080	36	5	48	ON(+)	ON(+)	64:27
738(113)	CTA-2560x1080-48		198	3750	2560	148	44	52.8	1100	1080	11	5	48	ON(+)	ON(+)	64:27
739(114)	CTA-3840x2160-48		594	5500	3840	296	88	108	2250	2160	72	10	48	ON(+)	ON(+)	16:9
740(115)	CTA-4096x2160-48		594	5500	4096	296	88	108	2250	2160	72	10	48	ON(+)	ON(+)	256:10
741(116)	CTA-3840x2160-48		594	5500	3840	296	88	108	2250	2160	72	10	48	ON(+)	ON(+)	64:27
742(117)	CTA-3840x2160-100		1188	5280	3840	296	88	225	2250	2160	72	10	100	ON(+)	ON(+)	16:9
743(118)	CTA-3840x2160-120		1188	4400	3840	296	88	270	2250	2160	72	10	120	ON(+)	ON(+)	16:9
744(119)	CTA-3840x2160-100		1188	5280	3840	296	88	225	2250	2160	72	10	100	ON(+)	ON(+)	64:27
745(120)	CTA-3840x2160-120		1188	4400	3840	296	88	270	2250	2160	72	10	120	ON(+)	ON(+)	64:27
746 ~753	reserved															
754(194)	CTA-7680x4320-24		1188	11000	7680	592	176	108	4500	4320	144	20	24	ON(+)	ON(+)	16:9
755(195)	CTA-7680x4320-25		1188	10800	7680	592	176	110	4400	4320	44	20	25	ON(+)	ON(+)	16:9
756(196)	CTA-7680x4320-30		1188	9000	7680	592	176	132	4400	4320	44	20	30	ON(+)	ON(+)	16:9
758(198)	CTA-7680x4320-50		2376	10800	7680	592	176	220	4400	4320	44	20	50	ON(+)	ON(+)	16:9
759(199)	CTA-7680x4320-60		2376	9000	7680	592	176	264	4400	4320	44	20	60	ON(+)	ON(+)	16:9
760 ~761	reserved															
762(202)	CTA-7680x4320-24		1188	11000	7680	592	176	216	4500	4320	144	20	48	ON(+)	ON(+)	64:27
763(203)	CTA-7680x4320-25		1188	10800	7680	592	176	110	4400	4320	44	20	25	ON(+)	ON(+)	64:27
764(204)	CTA-7680x4320-30		1188	9000	7680	592	176	132	4400	4320	44	20	30	ON(+)	ON(+)	64:27
766(206)	CTA-7680x4320-50		2376	10800	7680	592	176	220	4400	4320	44	20	50	ON(+)	ON(+)	64:27
767(207)	CTA-7680x4320-60		2376	9000	7680	592	176	264	4400	4320	44	20	60	ON(+)	ON(+)	64:27
768~777	reserved															
778(218)	CTA-4096x2160-100		1188	5280	4096	296	88	225	2250	2160	72	10	100	ON(+)	ON(+)	256:135
779(219)	CTA-4096x2160-120		1188	4400	4096	128	88	270	2250	2160	72	10	120	ON(+)	ON(+)	256:135
780 ~800	reserved															

本模組僅支援下列參數組合之訊號輸出

●	Supported Format
X	Not Supported
●	DSC+FRL

Timing	VIC	Formats	Field Rate	Picture Aspect Ratio (H:V)	Pixel Aspect Ratio (H:V)	RGB/YCC	Bit	TMDS	FRL 3G/3 Lane	FRL 6G/3 Lane	FRL 6G/4Lane	FRL 8G/4Lane	FRL 10G/4Lane	FRL 12G/4Lane
601(01)	1	640x480p	59.94Hz/60Hz	4:3	1:1	RGB/YC444	8	●	●	●	●	●	●	●
601(01)	1	640x480p	59.94Hz/60Hz	4:3	1:1	RGB/YC444	10	●	●	●	●	●	●	●
601(01)	1	640x480p	59.94Hz/60Hz	4:3	1:1	RGB/YC444	12	●	●	●	●	●	●	●
601(01)	1	640x480p	59.94Hz/60Hz	4:3	1:1	YC422	8	●	●	●	●	●	●	●

# HDMI 2.1 信號模組 A223805 使用手冊

601(01)	1	640x480p	59.94Hz/60Hz	4:3	1:1	YC422	10	●	●	●	●	●	●	●
601(01)	1	640x480p	59.94Hz/60Hz	4:3	1:1	YC422	12	●	●	●	●	●	●	●
601(01)	1	640x480p	59.94Hz/60Hz	4:3	1:1	YC420	8	X	X	X	X	X	X	X
601(01)	1	640x480p	59.94Hz/60Hz	4:3	1:1	YC420	10	X	X	X	X	X	X	X
601(01)	1	640x480p	59.94Hz/60Hz	4:3	1:1	YC420	12	X	X	X	X	X	X	X
603(02)	2	720x480p	59.94Hz/60Hz	4:3	8:9	RGB/YC444	8	●	●	●	●	●	●	●
603(02)	2	720x480p	59.94Hz/60Hz	4:3	8:9	RGB/YC444	10	●	X	X	X	X	X	X
603(02)	2	720x480p	59.94Hz/60Hz	4:3	8:9	RGB/YC444	12	●	●	●	●	●	●	●
603(02)	2	720x480p	59.94Hz/60Hz	4:3	8:9	YC422	8	●	●	●	●	●	●	●
603(02)	2	720x480p	59.94Hz/60Hz	4:3	8:9	YC422	10	●	●	●	●	●	●	●
603(02)	2	720x480p	59.94Hz/60Hz	4:3	8:9	YC422	12	●	●	●	●	●	●	●
603(02)	2	720x480p	59.94Hz/60Hz	4:3	8:9	YC420	8	X	X	X	X	X	X	X
603(02)	2	720x480p	59.94Hz/60Hz	4:3	8:9	YC420	10	X	X	X	X	X	X	X
603(02)	2	720x480p	59.94Hz/60Hz	4:3	8:9	YC420	12	X	X	X	X	X	X	X
605(03)	3	720x480p	59.94Hz/60Hz	16:9	32:27	RGB/YC444	8	●	●	●	●	●	●	●
605(03)	3	720x480p	59.94Hz/60Hz	16:9	32:27	RGB/YC444	10	●	X	X	X	X	X	X
605(03)	3	720x480p	59.94Hz/60Hz	16:9	32:27	RGB/YC444	12	●	●	●	●	●	●	●
605(03)	3	720x480p	59.94Hz/60Hz	16:9	32:27	YC422	8	●	●	●	●	●	●	●
605(03)	3	720x480p	59.94Hz/60Hz	16:9	32:27	YC422	10	●	●	●	●	●	●	●
605(03)	3	720x480p	59.94Hz/60Hz	16:9	32:27	YC422	12	●	●	●	●	●	●	●
605(03)	3	720x480p	59.94Hz/60Hz	16:9	32:27	YC420	8	X	X	X	X	X	X	X
605(03)	3	720x480p	59.94Hz/60Hz	16:9	32:27	YC420	10	X	X	X	X	X	X	X
605(03)	3	720x480p	59.94Hz/60Hz	16:9	32:27	YC420	12	X	X	X	X	X	X	X
607(04)	4	1280x720p	59.94Hz/60Hz	16:9	1:1	RGB/YC444	8	●	●	●	●	●	●	●
607(04)	4	1280x720p	59.94Hz/60Hz	16:9	1:1	RGB/YC444	10	●	X	X	X	X	X	X
607(04)	4	1280x720p	59.94Hz/60Hz	16:9	1:1	RGB/YC444	12	●	●	●	●	●	●	●
607(04)	4	1280x720p	59.94Hz/60Hz	16:9	1:1	YC422	8	●	●	●	●	●	●	●
607(04)	4	1280x720p	59.94Hz/60Hz	16:9	1:1	YC422	10	●	●	●	●	●	●	●
607(04)	4	1280x720p	59.94Hz/60Hz	16:9	1:1	YC422	12	●	●	●	●	●	●	●
607(04)	4	1280x720p	59.94Hz/60Hz	16:9	1:1	YC420	8	X	X	X	X	X	X	X
607(04)	4	1280x720p	59.94Hz/60Hz	16:9	1:1	YC420	10	X	X	X	X	X	X	X
607(04)	4	1280x720p	59.94Hz/60Hz	16:9	1:1	YC420	12	X	X	X	X	X	X	X
609(05)	5	1920x1080i	59.94Hz/60Hz	16:9	1:1	RGB/YC444	8	●	X	X	X	X	X	X
609(05)	5	1920x1080i	59.94Hz/60Hz	16:9	1:1	RGB/YC444	10	●	X	X	X	X	X	X
609(05)	5	1920x1080i	59.94Hz/60Hz	16:9	1:1	RGB/YC444	12	●	X	X	X	X	X	X
609(05)	5	1920x1080i	59.94Hz/60Hz	16:9	1:1	YC422	8	●	X	X	X	X	X	X
609(05)	5	1920x1080i	59.94Hz/60Hz	16:9	1:1	YC422	10	●	X	X	X	X	X	X
609(05)	5	1920x1080i	59.94Hz/60Hz	16:9	1:1	YC422	12	●	X	X	X	X	X	X

附錄 A A223805 Default Timing List

609(05)	5	1920x1080i	59.94Hz/60Hz	16:9	1:1	YC420	8	X	X	X	X	X	X	X
609(05)	5	1920x1080i	59.94Hz/60Hz	16:9	1:1	YC420	10	X	X	X	X	X	X	X
609(05)	5	1920x1080i	59.94Hz/60Hz	16:9	1:1	YC420	12	X	X	X	X	X	X	X
611(06)	6	720(1440)x480i	59.94Hz/60Hz	4:3	8:9	RGB/YC444	8	X	X	X	X	X	X	X
611(06)	6	720(1440)x480i	59.94Hz/60Hz	4:3	8:9	RGB/YC444	10	X	X	X	X	X	X	X
611(06)	6	720(1440)x480i	59.94Hz/60Hz	4:3	8:9	RGB/YC444	12	X	X	X	X	X	X	X
611(06)	6	720(1440)x480i	59.94Hz/60Hz	4:3	8:9	YC422	8	X	X	X	X	X	X	X
611(06)	6	720(1440)x480i	59.94Hz/60Hz	4:3	8:9	YC422	10	X	X	X	X	X	X	X
611(06)	6	720(1440)x480i	59.94Hz/60Hz	4:3	8:9	YC422	12	X	X	X	X	X	X	X
611(06)	6	720(1440)x480i	59.94Hz/60Hz	4:3	8:9	YC420	8	X	X	X	X	X	X	X
611(06)	6	720(1440)x480i	59.94Hz/60Hz	4:3	8:9	YC420	10	X	X	X	X	X	X	X
611(06)	6	720(1440)x480i	59.94Hz/60Hz	4:3	8:9	YC420	12	X	X	X	X	X	X	X
613(07)	7	720(1440)x480i	59.94Hz/60Hz	16:9	32:27	RGB/YC444	8	X	X	X	X	X	X	X
613(07)	7	720(1440)x480i	59.94Hz/60Hz	16:9	32:27	RGB/YC444	10	X	X	X	X	X	X	X
613(07)	7	720(1440)x480i	59.94Hz/60Hz	16:9	32:27	RGB/YC444	12	X	X	X	X	X	X	X
613(07)	7	720(1440)x480i	59.94Hz/60Hz	16:9	32:27	YC422	8	X	X	X	X	X	X	X
613(07)	7	720(1440)x480i	59.94Hz/60Hz	16:9	32:27	YC422	10	X	X	X	X	X	X	X
613(07)	7	720(1440)x480i	59.94Hz/60Hz	16:9	32:27	YC422	12	X	X	X	X	X	X	X
613(07)	7	720(1440)x480i	59.94Hz/60Hz	16:9	32:27	YC420	8	X	X	X	X	X	X	X
613(07)	7	720(1440)x480i	59.94Hz/60Hz	16:9	32:27	YC420	10	X	X	X	X	X	X	X
613(07)	7	720(1440)x480i	59.94Hz/60Hz	16:9	32:27	YC420	12	X	X	X	X	X	X	X
615(08)	8	720(1440)x240p	59.94Hz/60Hz	4:3	4:9	RGB/YC444	8	X	X	X	X	X	X	X
615(08)	8	720(1440)x240p	59.94Hz/60Hz	4:3	4:9	RGB/YC444	10	X	X	X	X	X	X	X
615(08)	8	720(1440)x240p	59.94Hz/60Hz	4:3	4:9	RGB/YC444	12	X	X	X	X	X	X	X
615(08)	8	720(1440)x240p	59.94Hz/60Hz	4:3	4:9	YC422	8	X	X	X	X	X	X	X
615(08)	8	720(1440)x240p	59.94Hz/60Hz	4:3	4:9	YC422	10	X	X	X	X	X	X	X
615(08)	8	720(1440)x240p	59.94Hz/60Hz	4:3	4:9	YC422	12	X	X	X	X	X	X	X
615(08)	8	720(1440)x240p	59.94Hz/60Hz	4:3	4:9	YC420	8	X	X	X	X	X	X	X
615(08)	8	720(1440)x240p	59.94Hz/60Hz	4:3	4:9	YC420	10	X	X	X	X	X	X	X
615(08)	8	720(1440)x240p	59.94Hz/60Hz	4:3	4:9	YC420	12	X	X	X	X	X	X	X
617(09)	9	720(1440)x240p	59.94Hz/60Hz	16:9	16:27	RGB/YC444	8	X	X	X	X	X	X	X
617(09)	9	720(1440)x240p	59.94Hz/60Hz	16:9	16:27	RGB/YC444	10	X	X	X	X	X	X	X
617(09)	9	720(1440)x240p	59.94Hz/60Hz	16:9	16:27	RGB/YC444	12	X	X	X	X	X	X	X
617(09)	9	720(1440)x240p	59.94Hz/60Hz	16:9	16:27	YC422	8	X	X	X	X	X	X	X
617(09)	9	720(1440)x240p	59.94Hz/60Hz	16:9	16:27	YC422	10	X	X	X	X	X	X	X
617(09)	9	720(1440)x240p	59.94Hz/60Hz	16:9	16:27	YC422	12	X	X	X	X	X	X	X
617(09)	9	720(1440)x240p	59.94Hz/60Hz	16:9	16:27	YC420	8	X	X	X	X	X	X	X
617(09)	9	720(1440)x240p	59.94Hz/60Hz	16:9	16:27	YC420	10	X	X	X	X	X	X	X

## HDMI 2.1 信號模組 A223805 使用手冊

617(09)	9	720(1440)x240p	59.94Hz/60Hz	16:9	16:27	YC420	12	X	X	X	X	X	X	X
619(10)	10	2880x480i	59.94Hz/60Hz	4:3	2:9 - 20:9	RGB/YC444	8	X	X	X	X	X	X	X
619(10)	10	2880x480i	59.94Hz/60Hz	4:3	2:9 - 20:9	RGB/YC444	10	X	X	X	X	X	X	X
619(10)	10	2880x480i	59.94Hz/60Hz	4:3	2:9 - 20:9	RGB/YC444	12	X	X	X	X	X	X	X
619(10)	10	2880x480i	59.94Hz/60Hz	4:3	2:9 - 20:9	YC422	8	X	X	X	X	X	X	X
619(10)	10	2880x480i	59.94Hz/60Hz	4:3	2:9 - 20:9	YC422	10	X	X	X	X	X	X	X
619(10)	10	2880x480i	59.94Hz/60Hz	4:3	2:9 - 20:9	YC422	12	X	X	X	X	X	X	X
619(10)	10	2880x480i	59.94Hz/60Hz	4:3	2:9 - 20:9	YC420	8	X	X	X	X	X	X	X
619(10)	10	2880x480i	59.94Hz/60Hz	4:3	2:9 - 20:9	YC420	10	X	X	X	X	X	X	X
619(10)	10	2880x480i	59.94Hz/60Hz	4:3	2:9 - 20:9	YC420	12	X	X	X	X	X	X	X
621(11)	11	2880x480i	59.94Hz/60Hz	16:9	8:27 X80:27	RGB/YC444	8	X	X	X	X	X	X	X
621(11)	11	2880x480i	59.94Hz/60Hz	16:9	8:27 X80:27	RGB/YC444	10	X	X	X	X	X	X	X
621(11)	11	2880x480i	59.94Hz/60Hz	16:9	8:27 X80:27	RGB/YC444	12	X	X	X	X	X	X	X
621(11)	11	2880x480i	59.94Hz/60Hz	16:9	8:27 X80:27	YC422	8	X	X	X	X	X	X	X
621(11)	11	2880x480i	59.94Hz/60Hz	16:9	8:27 X80:27	YC422	10	X	X	X	X	X	X	X
621(11)	11	2880x480i	59.94Hz/60Hz	16:9	8:27 X80:27	YC422	12	X	X	X	X	X	X	X
621(11)	11	2880x480i	59.94Hz/60Hz	16:9	8:27 X80:27	YC420	8	X	X	X	X	X	X	X
621(11)	11	2880x480i	59.94Hz/60Hz	16:9	8:27 X80:27	YC420	10	X	X	X	X	X	X	X
621(11)	11	2880x480i	59.94Hz/60Hz	16:9	8:27 X80:27	YC420	12	X	X	X	X	X	X	X
623(12)	12	2880x240p	59.94Hz/60Hz	4:3	1:9 - 10:9	RGB/YC444	8	X	X	X	X	X	X	X
623(12)	12	2880x240p	59.94Hz/60Hz	4:3	1:9 - 10:9	RGB/YC444	10	X	X	X	X	X	X	X
623(12)	12	2880x240p	59.94Hz/60Hz	4:3	1:9 - 10:9	RGB/YC444	12	X	X	X	X	X	X	X
623(12)	12	2880x240p	59.94Hz/60Hz	4:3	1:9 - 10:9	YC422	8	X	X	X	X	X	X	X
623(12)	12	2880x240p	59.94Hz/60Hz	4:3	1:9 - 10:9	YC422	10	X	X	X	X	X	X	X
623(12)	12	2880x240p	59.94Hz/60Hz	4:3	1:9 - 10:9	YC422	12	X	X	X	X	X	X	X
623(12)	12	2880x240p	59.94Hz/60Hz	4:3	1:9 - 10:9	YC420	8	X	X	X	X	X	X	X
623(12)	12	2880x240p	59.94Hz/60Hz	4:3	1:9 - 10:9	YC420	10	X	X	X	X	X	X	X
623(12)	12	2880x240p	59.94Hz/60Hz	4:3	1:9 - 10:9	YC420	12	X	X	X	X	X	X	X
625(13)	13	2880x240p	59.94Hz/60Hz	16:9	4:27 - 40:27	RGB/YC444	8	X	X	X	X	X	X	X
625(13)	13	2880x240p	59.94Hz/60Hz	16:9	4:27 - 40:27	RGB/YC444	10	X	X	X	X	X	X	X
625(13)	13	2880x240p	59.94Hz/60Hz	16:9	4:27 - 40:27	RGB/YC444	12	X	X	X	X	X	X	X
625(13)	13	2880x240p	59.94Hz/60Hz	16:9	4:27 - 40:27	YC422	8	X	X	X	X	X	X	X
625(13)	13	2880x240p	59.94Hz/60Hz	16:9	4:27 - 40:27	YC422	10	X	X	X	X	X	X	X
625(13)	13	2880x240p	59.94Hz/60Hz	16:9	4:27 - 40:27	YC422	12	X	X	X	X	X	X	X
625(13)	13	2880x240p	59.94Hz/60Hz	16:9	4:27 - 40:27	YC420	8	X	X	X	X	X	X	X
625(13)	13	2880x240p	59.94Hz/60Hz	16:9	4:27 - 40:27	YC420	10	X	X	X	X	X	X	X
625(13)	13	2880x240p	59.94Hz/60Hz	16:9	4:27 - 40:27	YC420	12	X	X	X	X	X	X	X
627(14)	14	1440x480p	59.94Hz/60Hz	4:3	4:9 or 8:9	RGB/YC444	8	●	X	X	X	X	X	X



附錄 A A223805 Default Timing List

627(14)	14	1440x480p	59.94Hz/60Hz	4:3	4:9 or 8:9	RGB/YC444	10	●	X	X	X	X	X	X
627(14)	14	1440x480p	59.94Hz/60Hz	4:3	4:9 or 8:9	RGB/YC444	12	●	X	X	X	X	X	X
627(14)	14	1440x480p	59.94Hz/60Hz	4:3	4:9 or 8:9	YC422	8	●	X	X	X	X	X	X
627(14)	14	1440x480p	59.94Hz/60Hz	4:3	4:9 or 8:9	YC422	10	●	X	X	X	X	X	X
627(14)	14	1440x480p	59.94Hz/60Hz	4:3	4:9 or 8:9	YC422	12	●	X	X	X	X	X	X
627(14)	14	1440x480p	59.94Hz/60Hz	4:3	4:9 or 8:9	YC420	8	X	X	X	X	X	X	X
627(14)	14	1440x480p	59.94Hz/60Hz	4:3	4:9 or 8:9	YC420	10	X	X	X	X	X	X	X
627(14)	14	1440x480p	59.94Hz/60Hz	4:3	4:9 or 8:9	YC420	12	X	X	X	X	X	X	X
629(15)	15	1440x480p	59.94Hz/60Hz	16:9	16:27 or 32:27	RGB/YC444	8	●	X	X	X	X	X	X
629(15)	15	1440x480p	59.94Hz/60Hz	16:9	16:27 or 32:27	RGB/YC444	10	●	X	X	X	X	X	X
629(15)	15	1440x480p	59.94Hz/60Hz	16:9	16:27 or 32:27	RGB/YC444	12	●	X	X	X	X	X	X
629(15)	15	1440x480p	59.94Hz/60Hz	16:9	16:27 or 32:27	YC422	8	●	X	X	X	X	X	X
629(15)	15	1440x480p	59.94Hz/60Hz	16:9	16:27 or 32:27	YC422	10	●	X	X	X	X	X	X
629(15)	15	1440x480p	59.94Hz/60Hz	16:9	16:27 or 32:27	YC422	12	●	X	X	X	X	X	X
629(15)	15	1440x480p	59.94Hz/60Hz	16:9	16:27 or 32:27	YC420	8	X	X	X	X	X	X	X
629(15)	15	1440x480p	59.94Hz/60Hz	16:9	16:27 or 32:27	YC420	10	X	X	X	X	X	X	X
629(15)	15	1440x480p	59.94Hz/60Hz	16:9	16:27 or 32:27	YC420	12	X	X	X	X	X	X	X
631(16)	16	1920x1080p	59.94Hz/60Hz	16:9	1:1	RGB/YC444	8	●	●	●	●	●	●	●
631(16)	16	1920x1080p	59.94Hz/60Hz	16:9	1:1	RGB/YC444	10	●	●	●	●	●	●	●
631(16)	16	1920x1080p	59.94Hz/60Hz	16:9	1:1	RGB/YC444	12	●	●	●	●	●	●	●
631(16)	16	1920x1080p	59.94Hz/60Hz	16:9	1:1	YC422	8	●	●	●	●	●	●	●
631(16)	16	1920x1080p	59.94Hz/60Hz	16:9	1:1	YC422	10	●	●	●	●	●	●	●
631(16)	16	1920x1080p	59.94Hz/60Hz	16:9	1:1	YC422	12	●	●	●	●	●	●	●
631(16)	16	1920x1080p	59.94Hz/60Hz	16:9	1:1	YC420	8	X	X	X	X	X	X	X
631(16)	16	1920x1080p	59.94Hz/60Hz	16:9	1:1	YC420	10	X	X	X	X	X	X	X
631(16)	16	1920x1080p	59.94Hz/60Hz	16:9	1:1	YC420	12	X	X	X	X	X	X	X
633(17)	17	720x576p	50Hz	4:3	16:15	RGB/YC444	8	●	X	X	X	X	X	X
633(17)	17	720x576p	50Hz	4:3	16:15	RGB/YC444	10	●	X	X	X	X	X	X
633(17)	17	720x576p	50Hz	4:3	16:15	RGB/YC444	12	●	X	X	X	X	X	X
633(17)	17	720x576p	50Hz	4:3	16:15	YC422	8	●	X	X	X	X	X	X
633(17)	17	720x576p	50Hz	4:3	16:15	YC422	10	●	X	X	X	X	X	X
633(17)	17	720x576p	50Hz	4:3	16:15	YC422	12	●	X	X	X	X	X	X
633(17)	17	720x576p	50Hz	4:3	16:15	YC420	8	X	X	X	X	X	X	X
633(17)	17	720x576p	50Hz	4:3	16:15	YC420	10	X	X	X	X	X	X	X
633(17)	17	720x576p	50Hz	4:3	16:15	YC420	12	X	X	X	X	X	X	X
634(18)	18	720x576p	50Hz	16:9	64:45	RGB/YC444	8	●	X	X	X	X	X	X
634(18)	18	720x576p	50Hz	16:9	64:45	RGB/YC444	10	●	X	X	X	X	X	X
634(18)	18	720x576p	50Hz	16:9	64:45	RGB/YC444	12	●	X	X	X	X	X	X

## HDMI 2.1 信號模組 A223805 使用手冊

634(18)	18	720x576p	50Hz	16:9	64:45	YC422	8	●	X	X	X	X	X	X
634(18)	18	720x576p	50Hz	16:9	64:45	YC422	10	●	X	X	X	X	X	X
634(18)	18	720x576p	50Hz	16:9	64:45	YC422	12	●	X	X	X	X	X	X
634(18)	18	720x576p	50Hz	16:9	64:45	YC420	8	X	X	X	X	X	X	X
634(18)	18	720x576p	50Hz	16:9	64:45	YC420	10	X	X	X	X	X	X	X
634(18)	18	720x576p	50Hz	16:9	64:45	YC420	12	X	X	X	X	X	X	X
635(19)	19	1280x720p	50Hz	16:9	1:1	RGB/YC444	8	●	X	X	X	X	X	X
635(19)	19	1280x720p	50Hz	16:9	1:1	RGB/YC444	10	●	X	X	X	X	X	X
635(19)	19	1280x720p	50Hz	16:9	1:1	RGB/YC444	12	●	X	X	X	X	X	X
635(19)	19	1280x720p	50Hz	16:9	1:1	YC422	8	●	X	X	X	X	X	X
635(19)	19	1280x720p	50Hz	16:9	1:1	YC422	10	●	X	X	X	X	X	X
635(19)	19	1280x720p	50Hz	16:9	1:1	YC422	12	●	X	X	X	X	X	X
635(19)	19	1280x720p	50Hz	16:9	1:1	YC420	8	X	X	X	X	X	X	X
635(19)	19	1280x720p	50Hz	16:9	1:1	YC420	10	X	X	X	X	X	X	X
635(19)	19	1280x720p	50Hz	16:9	1:1	YC420	12	X	X	X	X	X	X	X
636(20)	20	1920x1080i	50Hz	16:9	1:1	RGB/YC444	8	●	X	X	X	X	X	X
636(20)	20	1920x1080i	50Hz	16:9	1:1	RGB/YC444	10	●	X	X	X	X	X	X
636(20)	20	1920x1080i	50Hz	16:9	1:1	RGB/YC444	12	●	X	X	X	X	X	X
636(20)	20	1920x1080i	50Hz	16:9	1:1	YC422	8	●	X	X	X	X	X	X
636(20)	20	1920x1080i	50Hz	16:9	1:1	YC422	10	●	X	X	X	X	X	X
636(20)	20	1920x1080i	50Hz	16:9	1:1	YC422	12	●	X	X	X	X	X	X
636(20)	20	1920x1080i	50Hz	16:9	1:1	YC420	8	X	X	X	X	X	X	X
636(20)	20	1920x1080i	50Hz	16:9	1:1	YC420	10	X	X	X	X	X	X	X
636(20)	20	1920x1080i	50Hz	16:9	1:1	YC420	12	X	X	X	X	X	X	X
637(21)	21	720(1440)x576i	50Hz	4:3	16:15	RGB/YC444	8	X	X	X	X	X	X	X
637(21)	21	720(1440)x576i	50Hz	4:3	16:15	RGB/YC444	10	X	X	X	X	X	X	X
637(21)	21	720(1440)x576i	50Hz	4:3	16:15	RGB/YC444	12	X	X	X	X	X	X	X
637(21)	21	720(1440)x576i	50Hz	4:3	16:15	YC422	8	X	X	X	X	X	X	X
637(21)	21	720(1440)x576i	50Hz	4:3	16:15	YC422	10	X	X	X	X	X	X	X
637(21)	21	720(1440)x576i	50Hz	4:3	16:15	YC422	12	X	X	X	X	X	X	X
637(21)	21	720(1440)x576i	50Hz	4:3	16:15	YC420	8	X	X	X	X	X	X	X
637(21)	21	720(1440)x576i	50Hz	4:3	16:15	YC420	10	X	X	X	X	X	X	X
637(21)	21	720(1440)x576i	50Hz	4:3	16:15	YC420	12	X	X	X	X	X	X	X
638(22)	22	720(1440)x576i	50Hz	16:9	64:45	RGB/YC444	8	X	X	X	X	X	X	X
638(22)	22	720(1440)x576i	50Hz	16:9	64:45	RGB/YC444	10	X	X	X	X	X	X	X
638(22)	22	720(1440)x576i	50Hz	16:9	64:45	RGB/YC444	12	X	X	X	X	X	X	X
638(22)	22	720(1440)x576i	50Hz	16:9	64:45	YC422	8	X	X	X	X	X	X	X
638(22)	22	720(1440)x576i	50Hz	16:9	64:45	YC422	10	X	X	X	X	X	X	X

## 附錄 A A223805 Default Timing List

638(22)	22	720(1440)x576i	50Hz	16:9	64:45	YC422	12	X	X	X	X	X	X	X
638(22)	22	720(1440)x576i	50Hz	16:9	64:45	YC420	8	X	X	X	X	X	X	X
638(22)	22	720(1440)x576i	50Hz	16:9	64:45	YC420	10	X	X	X	X	X	X	X
638(22)	22	720(1440)x576i	50Hz	16:9	64:45	YC420	12	X	X	X	X	X	X	X
639(23)	23	720(1440)x288p	50Hz	4:3	8:15	RGB/YC444	8	X	X	X	X	X	X	X
639(23)	23	720(1440)x288p	50Hz	4:3	8:15	RGB/YC444	10	X	X	X	X	X	X	X
639(23)	23	720(1440)x288p	50Hz	4:3	8:15	RGB/YC444	12	X	X	X	X	X	X	X
639(23)	23	720(1440)x288p	50Hz	4:3	8:15	YC422	8	X	X	X	X	X	X	X
639(23)	23	720(1440)x288p	50Hz	4:3	8:15	YC422	10	X	X	X	X	X	X	X
639(23)	23	720(1440)x288p	50Hz	4:3	8:15	YC422	12	X	X	X	X	X	X	X
639(23)	23	720(1440)x288p	50Hz	4:3	8:15	YC420	8	X	X	X	X	X	X	X
639(23)	23	720(1440)x288p	50Hz	4:3	8:15	YC420	10	X	X	X	X	X	X	X
639(23)	23	720(1440)x288p	50Hz	4:3	8:15	YC420	12	X	X	X	X	X	X	X
640(24)	24	720(1440)x288p	50Hz	16:9	32:45	RGB/YC444	8	X	X	X	X	X	X	X
640(24)	24	720(1440)x288p	50Hz	16:9	32:45	RGB/YC444	10	X	X	X	X	X	X	X
640(24)	24	720(1440)x288p	50Hz	16:9	32:45	RGB/YC444	12	X	X	X	X	X	X	X
640(24)	24	720(1440)x288p	50Hz	16:9	32:45	YC422	8	X	X	X	X	X	X	X
640(24)	24	720(1440)x288p	50Hz	16:9	32:45	YC422	10	X	X	X	X	X	X	X
640(24)	24	720(1440)x288p	50Hz	16:9	32:45	YC422	12	X	X	X	X	X	X	X
640(24)	24	720(1440)x288p	50Hz	16:9	32:45	YC420	8	X	X	X	X	X	X	X
640(24)	24	720(1440)x288p	50Hz	16:9	32:45	YC420	10	X	X	X	X	X	X	X
640(24)	24	720(1440)x288p	50Hz	16:9	32:45	YC420	12	X	X	X	X	X	X	X
641(25)	25	2880x576i	50Hz	4:3	2:15 - 20:15	RGB/YC444	8	X	X	X	X	X	X	X
641(25)	25	2880x576i	50Hz	4:3	2:15 - 20:15	RGB/YC444	10	X	X	X	X	X	X	X
641(25)	25	2880x576i	50Hz	4:3	2:15 - 20:15	RGB/YC444	12	X	X	X	X	X	X	X
641(25)	25	2880x576i	50Hz	4:3	2:15 - 20:15	YC422	8	X	X	X	X	X	X	X
641(25)	25	2880x576i	50Hz	4:3	2:15 - 20:15	YC422	10	X	X	X	X	X	X	X
641(25)	25	2880x576i	50Hz	4:3	2:15 - 20:15	YC422	12	X	X	X	X	X	X	X
641(25)	25	2880x576i	50Hz	4:3	2:15 - 20:15	YC420	8	X	X	X	X	X	X	X
641(25)	25	2880x576i	50Hz	4:3	2:15 - 20:15	YC420	10	X	X	X	X	X	X	X
641(25)	25	2880x576i	50Hz	4:3	2:15 - 20:15	YC420	12	X	X	X	X	X	X	X
642(26)	26	2880x576i	50Hz	16:9	16:45X160:45	RGB/YC444	8	X	X	X	X	X	X	X
642(26)	26	2880x576i	50Hz	16:9	16:45X160:45	RGB/YC444	10	X	X	X	X	X	X	X
642(26)	26	2880x576i	50Hz	16:9	16:45X160:45	RGB/YC444	12	X	X	X	X	X	X	X
642(26)	26	2880x576i	50Hz	16:9	16:45X160:45	YC422	8	X	X	X	X	X	X	X
642(26)	26	2880x576i	50Hz	16:9	16:45X160:45	YC422	10	X	X	X	X	X	X	X
642(26)	26	2880x576i	50Hz	16:9	16:45X160:45	YC422	12	X	X	X	X	X	X	X
642(26)	26	2880x576i	50Hz	16:9	16:45X160:45	YC420	8	X	X	X	X	X	X	X

## HDMI 2.1 信號模組 A223805 使用手冊

642(26)	26	2880x576i	50Hz	16:9	16:45X160:45	YC420	10	X	X	X	X	X	X	X
642(26)	26	2880x576i	50Hz	16:9	16:45X160:45	YC420	12	X	X	X	X	X	X	X
643(27)	27	2880x288p	50Hz	4:3	1:15 – 10:15	RGB/YC444	8	X	X	X	X	X	X	X
643(27)	27	2880x288p	50Hz	4:3	1:15 – 10:15	RGB/YC444	10	X	X	X	X	X	X	X
643(27)	27	2880x288p	50Hz	4:3	1:15 – 10:15	RGB/YC444	12	X	X	X	X	X	X	X
643(27)	27	2880x288p	50Hz	4:3	1:15 – 10:15	YC422	8	X	X	X	X	X	X	X
643(27)	27	2880x288p	50Hz	4:3	1:15 – 10:15	YC422	10	X	X	X	X	X	X	X
643(27)	27	2880x288p	50Hz	4:3	1:15 – 10:15	YC422	12	X	X	X	X	X	X	X
643(27)	27	2880x288p	50Hz	4:3	1:15 – 10:15	YC420	8	X	X	X	X	X	X	X
643(27)	27	2880x288p	50Hz	4:3	1:15 – 10:15	YC420	10	X	X	X	X	X	X	X
643(27)	27	2880x288p	50Hz	4:3	1:15 – 10:15	YC420	12	X	X	X	X	X	X	X
644(28)	28	2880x288p	50Hz	16:9	8:45 – 80:45	RGB/YC444	8	X	X	X	X	X	X	X
644(28)	28	2880x288p	50Hz	16:9	8:45 – 80:45	RGB/YC444	10	X	X	X	X	X	X	X
644(28)	28	2880x288p	50Hz	16:9	8:45 – 80:45	RGB/YC444	12	X	X	X	X	X	X	X
644(28)	28	2880x288p	50Hz	16:9	8:45 – 80:45	YC422	8	X	X	X	X	X	X	X
644(28)	28	2880x288p	50Hz	16:9	8:45 – 80:45	YC422	10	X	X	X	X	X	X	X
644(28)	28	2880x288p	50Hz	16:9	8:45 – 80:45	YC422	12	X	X	X	X	X	X	X
644(28)	28	2880x288p	50Hz	16:9	8:45 – 80:45	YC420	8	X	X	X	X	X	X	X
644(28)	28	2880x288p	50Hz	16:9	8:45 – 80:45	YC420	10	X	X	X	X	X	X	X
644(28)	28	2880x288p	50Hz	16:9	8:45 – 80:45	YC420	12	X	X	X	X	X	X	X
645(29)	29	1440x576p	50Hz	4:3	8:15 or 16:15	RGB/YC444	8	●	X	X	X	X	X	X
645(29)	29	1440x576p	50Hz	4:3	8:15 or 16:15	RGB/YC444	10	●	X	X	X	X	X	X
645(29)	29	1440x576p	50Hz	4:3	8:15 or 16:15	RGB/YC444	12	●	X	X	X	X	X	X
645(29)	29	1440x576p	50Hz	4:3	8:15 or 16:15	YC422	8	●	X	X	X	X	X	X
645(29)	29	1440x576p	50Hz	4:3	8:15 or 16:15	YC422	10	●	X	X	X	X	X	X
645(29)	29	1440x576p	50Hz	4:3	8:15 or 16:15	YC422	12	●	X	X	X	X	X	X
645(29)	29	1440x576p	50Hz	4:3	8:15 or 16:15	YC420	8	X	X	X	X	X	X	X
645(29)	29	1440x576p	50Hz	4:3	8:15 or 16:15	YC420	10	X	X	X	X	X	X	X
645(29)	29	1440x576p	50Hz	4:3	8:15 or 16:15	YC420	12	X	X	X	X	X	X	X
646(30)	30	1440x576p	50Hz	16:9	32:45 or 64:45	RGB/YC444	8	●	X	X	X	X	X	X
646(30)	30	1440x576p	50Hz	16:9	32:45 or 64:45	RGB/YC444	10	●	X	X	X	X	X	X
646(30)	30	1440x576p	50Hz	16:9	32:45 or 64:45	RGB/YC444	12	●	X	X	X	X	X	X
646(30)	30	1440x576p	50Hz	16:9	32:45 or 64:45	YC422	8	●	X	X	X	X	X	X
646(30)	30	1440x576p	50Hz	16:9	32:45 or 64:45	YC422	10	●	X	X	X	X	X	X
646(30)	30	1440x576p	50Hz	16:9	32:45 or 64:45	YC422	12	●	X	X	X	X	X	X
646(30)	30	1440x576p	50Hz	16:9	32:45 or 64:45	YC420	8	X	X	X	X	X	X	X
646(30)	30	1440x576p	50Hz	16:9	32:45 or 64:45	YC420	10	X	X	X	X	X	X	X
646(30)	30	1440x576p	50Hz	16:9	32:45 or 64:45	YC420	12	X	X	X	X	X	X	X

## 附錄 A A223805 Default Timing List

647(31)	31	1920x1080p	50Hz	16:9	1:1	RGB/YC444	8	●	X	X	X	X	X	X
647(31)	31	1920x1080p	50Hz	16:9	1:1	RGB/YC444	10	●	X	X	X	X	X	X
647(31)	31	1920x1080p	50Hz	16:9	1:1	RGB/YC444	12	●	X	X	X	X	X	X
647(31)	31	1920x1080p	50Hz	16:9	1:1	YC422	8	●	X	X	X	X	X	X
647(31)	31	1920x1080p	50Hz	16:9	1:1	YC422	10	●	X	X	X	X	X	X
647(31)	31	1920x1080p	50Hz	16:9	1:1	YC422	12	●	X	X	X	X	X	X
647(31)	31	1920x1080p	50Hz	16:9	1:1	YC420	8	X	X	X	X	X	X	X
647(31)	31	1920x1080p	50Hz	16:9	1:1	YC420	10	X	X	X	X	X	X	X
647(31)	31	1920x1080p	50Hz	16:9	1:1	YC420	12	X	X	X	X	X	X	X
648(32)	32	1920x1080p	23.98Hz/24Hz	16:9	1:1	RGB/YC444	8	●	●	●	●	●	●	●
648(32)	32	1920x1080p	23.98Hz/24Hz	16:9	1:1	RGB/YC444	10	●	X	X	X	X	X	X
648(32)	32	1920x1080p	23.98Hz/24Hz	16:9	1:1	RGB/YC444	12	●	●	●	●	●	●	●
648(32)	32	1920x1080p	23.98Hz/24Hz	16:9	1:1	YC422	8	●	●	●	●	●	●	●
648(32)	32	1920x1080p	23.98Hz/24Hz	16:9	1:1	YC422	10	●	●	●	●	●	●	●
648(32)	32	1920x1080p	23.98Hz/24Hz	16:9	1:1	YC422	12	●	●	●	●	●	●	●
648(32)	32	1920x1080p	23.98Hz/24Hz	16:9	1:1	YC420	8	X	X	X	X	X	X	X
648(32)	32	1920x1080p	23.98Hz/24Hz	16:9	1:1	YC420	10	X	X	X	X	X	X	X
648(32)	32	1920x1080p	23.98Hz/24Hz	16:9	1:1	YC420	12	X	X	X	X	X	X	X
650(33)	33	1920x1080p	25Hz	16:9	1:1	RGB/YC444	8	●	X	X	X	X	X	X
650(33)	33	1920x1080p	25Hz	16:9	1:1	RGB/YC444	10	●	X	X	X	X	X	X
650(33)	33	1920x1080p	25Hz	16:9	1:1	RGB/YC444	12	●	X	X	X	X	X	X
650(33)	33	1920x1080p	25Hz	16:9	1:1	YC422	8	●	X	X	X	X	X	X
650(33)	33	1920x1080p	25Hz	16:9	1:1	YC422	10	●	X	X	X	X	X	X
650(33)	33	1920x1080p	25Hz	16:9	1:1	YC422	12	●	X	X	X	X	X	X
650(33)	33	1920x1080p	25Hz	16:9	1:1	YC420	8	X	X	X	X	X	X	X
650(33)	33	1920x1080p	25Hz	16:9	1:1	YC420	10	X	X	X	X	X	X	X
650(33)	33	1920x1080p	25Hz	16:9	1:1	YC420	12	X	X	X	X	X	X	X
651(34)	34	1920x1080p	29.97Hz/30Hz	16:9	1:1	RGB/YC444	8	●	●	●	●	●	●	●
651(34)	34	1920x1080p	29.97Hz/30Hz	16:9	1:1	RGB/YC444	10	●	●	●	●	●	●	●
651(34)	34	1920x1080p	29.97Hz/30Hz	16:9	1:1	RGB/YC444	12	●	●	●	●	●	●	●
651(34)	34	1920x1080p	29.97Hz/30Hz	16:9	1:1	YC422	8	●	●	●	●	●	●	●
651(34)	34	1920x1080p	29.97Hz/30Hz	16:9	1:1	YC422	10	●	●	●	●	●	●	●
651(34)	34	1920x1080p	29.97Hz/30Hz	16:9	1:1	YC422	12	●	●	●	●	●	●	●
651(34)	34	1920x1080p	29.97Hz/30Hz	16:9	1:1	YC420	8	X	X	X	X	X	X	X
651(34)	34	1920x1080p	29.97Hz/30Hz	16:9	1:1	YC420	10	X	X	X	X	X	X	X
651(34)	34	1920x1080p	29.97Hz/30Hz	16:9	1:1	YC420	12	X	X	X	X	X	X	X
653(35)	35	2880x480p	59.94Hz/60Hz	4:3	2:9, 4:9, or 8:9	RGB/YC444	8	X	X	X	X	X	X	X
653(35)	35	2880x480p	59.94Hz/60Hz	4:3	2:9, 4:9, or 8:9	RGB/YC444	10	X	X	X	X	X	X	X

## HDMI 2.1 信號模組 A223805 使用手冊

653(35)	35	2880x480p	59.94Hz/60Hz	4:3	2:9, 4:9, or 8:9	RGB/YC444	12	X	X	X	X	X	X	X
653(35)	35	2880x480p	59.94Hz/60Hz	4:3	2:9, 4:9, or 8:9	YC422	8	X	X	X	X	X	X	X
653(35)	35	2880x480p	59.94Hz/60Hz	4:3	2:9, 4:9, or 8:9	YC422	10	X	X	X	X	X	X	X
653(35)	35	2880x480p	59.94Hz/60Hz	4:3	2:9, 4:9, or 8:9	YC422	12	X	X	X	X	X	X	X
653(35)	35	2880x480p	59.94Hz/60Hz	4:3	2:9, 4:9, or 8:9	YC420	8	X	X	X	X	X	X	X
653(35)	35	2880x480p	59.94Hz/60Hz	4:3	2:9, 4:9, or 8:9	YC420	10	X	X	X	X	X	X	X
653(35)	35	2880x480p	59.94Hz/60Hz	4:3	2:9, 4:9, or 8:9	YC420	12	X	X	X	X	X	X	X
654(36)	36	2880x480p	59.94Hz/60Hz	16:9	8:27, 16:27, or 32:27	RGB/YC444	8	X	X	X	X	X	X	X
654(36)	36	2880x480p	59.94Hz/60Hz	16:9	8:27, 16:27, or 32:27	RGB/YC444	10	X	X	X	X	X	X	X
654(36)	36	2880x480p	59.94Hz/60Hz	16:9	8:27, 16:27, or 32:27	RGB/YC444	12	X	X	X	X	X	X	X
654(36)	36	2880x480p	59.94Hz/60Hz	16:9	8:27, 16:27, or 32:27	YC422	8	X	X	X	X	X	X	X
654(36)	36	2880x480p	59.94Hz/60Hz	16:9	8:27, 16:27, or 32:27	YC422	10	X	X	X	X	X	X	X
654(36)	36	2880x480p	59.94Hz/60Hz	16:9	8:27, 16:27, or 32:27	YC422	12	X	X	X	X	X	X	X
654(36)	36	2880x480p	59.94Hz/60Hz	16:9	8:27, 16:27, or 32:27	YC420	8	X	X	X	X	X	X	X
654(36)	36	2880x480p	59.94Hz/60Hz	16:9	8:27, 16:27, or 32:27	YC420	10	X	X	X	X	X	X	X
654(36)	36	2880x480p	59.94Hz/60Hz	16:9	8:27, 16:27, or 32:27	YC420	12	X	X	X	X	X	X	X
655(37)	37	2880x576p	50Hz	4:3	4:15, 8:15, or 16:15	RGB/YC444	8	X	X	X	X	X	X	X
655(37)	37	2880x576p	50Hz	4:3	4:15, 8:15, or 16:15	RGB/YC444	10	X	X	X	X	X	X	X
655(37)	37	2880x576p	50Hz	4:3	4:15, 8:15, or 16:15	RGB/YC444	12	X	X	X	X	X	X	X
655(37)	37	2880x576p	50Hz	4:3	4:15, 8:15, or 16:15	YC422	8	X	X	X	X	X	X	X
655(37)	37	2880x576p	50Hz	4:3	4:15, 8:15, or 16:15	YC422	10	X	X	X	X	X	X	X
655(37)	37	2880x576p	50Hz	4:3	4:15, 8:15, or 16:15	YC422	12	X	X	X	X	X	X	X
655(37)	37	2880x576p	50Hz	4:3	4:15, 8:15, or 16:15	YC420	8	X	X	X	X	X	X	X
655(37)	37	2880x576p	50Hz	4:3	4:15, 8:15, or 16:15	YC420	10	X	X	X	X	X	X	X
655(37)	37	2880x576p	50Hz	4:3	4:15, 8:15, or 16:15	YC420	12	X	X	X	X	X	X	X
656(38)	38	2880x576p	50Hz	16:9	16:45, 32:45, or 64:45	RGB/YC444	8	X	X	X	X	X	X	X
656(38)	38	2880x576p	50Hz	16:9	16:45, 32:45, or 64:45	RGB/YC444	10	X	X	X	X	X	X	X
656(38)	38	2880x576p	50Hz	16:9	16:45, 32:45, or 64:45	RGB/YC444	12	X	X	X	X	X	X	X
656(38)	38	2880x576p	50Hz	16:9	16:45, 32:45, or 64:45	YC422	8	X	X	X	X	X	X	X
656(38)	38	2880x576p	50Hz	16:9	16:45, 32:45, or 64:45	YC422	10	X	X	X	X	X	X	X
656(38)	38	2880x576p	50Hz	16:9	16:45, 32:45, or 64:45	YC422	12	X	X	X	X	X	X	X
656(38)	38	2880x576p	50Hz	16:9	16:45, 32:45, or 64:45	YC420	8	X	X	X	X	X	X	X
656(38)	38	2880x576p	50Hz	16:9	16:45, 32:45, or 64:45	YC420	10	X	X	X	X	X	X	X
656(38)	38	2880x576p	50Hz	16:9	16:45, 32:45, or 64:45	YC420	12	X	X	X	X	X	X	X
657(39)	39	1920x1080i (1250 total)	50Hz	16:9	1:1	RGB/YC444	8	●	X	X	X	X	X	X
657(39)	39	1920x1080i (1250 total)	50Hz	16:9	1:1	RGB/YC444	10	●	X	X	X	X	X	X
657(39)	39	1920x1080i (1250 total)	50Hz	16:9	1:1	RGB/YC444	12	●	X	X	X	X	X	X
657(39)	39	1920x1080i (1250 total)	50Hz	16:9	1:1	YC422	8	●	X	X	X	X	X	X

## 附錄 A A223805 Default Timing List

657(39)	39	1920x1080i (1250 total)	50Hz	16:9	1:1	YC422	10	●	X	X	X	X	X	X
657(39)	39	1920x1080i (1250 total)	50Hz	16:9	1:1	YC422	12	●	X	X	X	X	X	X
657(39)	39	1920x1080i (1250 total)	50Hz	16:9	1:1	YC420	8	X	X	X	X	X	X	X
657(39)	39	1920x1080i (1250 total)	50Hz	16:9	1:1	YC420	10	X	X	X	X	X	X	X
657(39)	39	1920x1080i (1250 total)	50Hz	16:9	1:1	YC420	12	X	X	X	X	X	X	X
658(40)	40	1920x1080i	100Hz	16:9	1:1	RGB/YC444	8	●	X	X	X	X	X	X
658(40)	40	1920x1080i	100Hz	16:9	1:1	RGB/YC444	10	●	X	X	X	X	X	X
658(40)	40	1920x1080i	100Hz	16:9	1:1	RGB/YC444	12	●	X	X	X	X	X	X
658(40)	40	1920x1080i	100Hz	16:9	1:1	YC422	8	●	X	X	X	X	X	X
658(40)	40	1920x1080i	100Hz	16:9	1:1	YC422	10	●	X	X	X	X	X	X
658(40)	40	1920x1080i	100Hz	16:9	1:1	YC422	12	●	X	X	X	X	X	X
658(40)	40	1920x1080i	100Hz	16:9	1:1	YC420	8	X	X	X	X	X	X	X
658(40)	40	1920x1080i	100Hz	16:9	1:1	YC420	10	X	X	X	X	X	X	X
658(40)	40	1920x1080i	100Hz	16:9	1:1	YC420	12	X	X	X	X	X	X	X
659(41)	41	1280x720p	100Hz	16:9	1:1	RGB/YC444	8	●	X	X	X	X	X	X
659(41)	41	1280x720p	100Hz	16:9	1:1	RGB/YC444	10	●	X	X	X	X	X	X
659(41)	41	1280x720p	100Hz	16:9	1:1	RGB/YC444	12	●	X	X	X	X	X	X
659(41)	41	1280x720p	100Hz	16:9	1:1	YC422	8	●	X	X	X	X	X	X
659(41)	41	1280x720p	100Hz	16:9	1:1	YC422	10	●	X	X	X	X	X	X
659(41)	41	1280x720p	100Hz	16:9	1:1	YC422	12	●	X	X	X	X	X	X
659(41)	41	1280x720p	100Hz	16:9	1:1	YC420	8	X	X	X	X	X	X	X
659(41)	41	1280x720p	100Hz	16:9	1:1	YC420	10	X	X	X	X	X	X	X
659(41)	41	1280x720p	100Hz	16:9	1:1	YC420	12	X	X	X	X	X	X	X
660(42)	42	720x576p	100Hz	4:3	16:15	RGB/YC444	8	●	X	X	X	X	X	X
660(42)	42	720x576p	100Hz	4:3	16:15	RGB/YC444	10	●	X	X	X	X	X	X
660(42)	42	720x576p	100Hz	4:3	16:15	RGB/YC444	12	●	X	X	X	X	X	X
660(42)	42	720x576p	100Hz	4:3	16:15	YC422	8	●	X	X	X	X	X	X
660(42)	42	720x576p	100Hz	4:3	16:15	YC422	10	●	X	X	X	X	X	X
660(42)	42	720x576p	100Hz	4:3	16:15	YC422	12	●	X	X	X	X	X	X
660(42)	42	720x576p	100Hz	4:3	16:15	YC420	8	X	X	X	X	X	X	X
660(42)	42	720x576p	100Hz	4:3	16:15	YC420	10	X	X	X	X	X	X	X
660(42)	42	720x576p	100Hz	4:3	16:15	YC420	12	X	X	X	X	X	X	X
661(43)	43	720x576p	100Hz	16:9	64:45	RGB/YC444	8	●	X	X	X	X	X	X
661(43)	43	720x576p	100Hz	16:9	64:45	RGB/YC444	10	●	X	X	X	X	X	X
661(43)	43	720x576p	100Hz	16:9	64:45	RGB/YC444	12	●	X	X	X	X	X	X
661(43)	43	720x576p	100Hz	16:9	64:45	YC422	8	●	X	X	X	X	X	X
661(43)	43	720x576p	100Hz	16:9	64:45	YC422	10	●	X	X	X	X	X	X
661(43)	43	720x576p	100Hz	16:9	64:45	YC422	12	●	X	X	X	X	X	X

## HDMI 2.1 信號模組 A223805 使用手冊

661(43)	43	720x576p	100Hz	16:9	64:45	YC420	8	X	X	X	X	X	X	X
661(43)	43	720x576p	100Hz	16:9	64:45	YC420	10	X	X	X	X	X	X	X
661(43)	43	720x576p	100Hz	16:9	64:45	YC420	12	X	X	X	X	X	X	X
662(44)	44	720(1440)x576i	100Hz	4:3	16:15	RGB/YC444	8	X	X	X	X	X	X	X
662(44)	44	720(1440)x576i	100Hz	4:3	16:15	RGB/YC444	10	X	X	X	X	X	X	X
662(44)	44	720(1440)x576i	100Hz	4:3	16:15	RGB/YC444	12	X	X	X	X	X	X	X
662(44)	44	720(1440)x576i	100Hz	4:3	16:15	YC422	8	X	X	X	X	X	X	X
662(44)	44	720(1440)x576i	100Hz	4:3	16:15	YC422	10	X	X	X	X	X	X	X
662(44)	44	720(1440)x576i	100Hz	4:3	16:15	YC422	12	X	X	X	X	X	X	X
662(44)	44	720(1440)x576i	100Hz	4:3	16:15	YC420	8	X	X	X	X	X	X	X
662(44)	44	720(1440)x576i	100Hz	4:3	16:15	YC420	10	X	X	X	X	X	X	X
662(44)	44	720(1440)x576i	100Hz	4:3	16:15	YC420	12	X	X	X	X	X	X	X
663(45)	45	720(1440)x576i	100Hz	16:9	64:45	RGB/YC444	8	X	X	X	X	X	X	X
663(45)	45	720(1440)x576i	100Hz	16:9	64:45	RGB/YC444	10	X	X	X	X	X	X	X
663(45)	45	720(1440)x576i	100Hz	16:9	64:45	RGB/YC444	12	X	X	X	X	X	X	X
663(45)	45	720(1440)x576i	100Hz	16:9	64:45	YC422	8	X	X	X	X	X	X	X
663(45)	45	720(1440)x576i	100Hz	16:9	64:45	YC422	10	X	X	X	X	X	X	X
663(45)	45	720(1440)x576i	100Hz	16:9	64:45	YC422	12	X	X	X	X	X	X	X
663(45)	45	720(1440)x576i	100Hz	16:9	64:45	YC420	8	X	X	X	X	X	X	X
663(45)	45	720(1440)x576i	100Hz	16:9	64:45	YC420	10	X	X	X	X	X	X	X
663(45)	45	720(1440)x576i	100Hz	16:9	64:45	YC420	12	X	X	X	X	X	X	X
664(46)	46	1920x1080i	119.88/120Hz	16:9	1:1	RGB/YC444	8	●	X	X	X	X	X	X
664(46)	46	1920x1080i	119.88/120Hz	16:9	1:1	RGB/YC444	10	●	X	X	X	X	X	X
664(46)	46	1920x1080i	119.88/120Hz	16:9	1:1	RGB/YC444	12	●	X	X	X	X	X	X
664(46)	46	1920x1080i	119.88/120Hz	16:9	1:1	YC422	8	●	X	X	X	X	X	X
664(46)	46	1920x1080i	119.88/120Hz	16:9	1:1	YC422	10	●	X	X	X	X	X	X
664(46)	46	1920x1080i	119.88/120Hz	16:9	1:1	YC422	12	●	X	X	X	X	X	X
664(46)	46	1920x1080i	119.88/120Hz	16:9	1:1	YC420	8	X	X	X	X	X	X	X
664(46)	46	1920x1080i	119.88/120Hz	16:9	1:1	YC420	10	X	X	X	X	X	X	X
664(46)	46	1920x1080i	119.88/120Hz	16:9	1:1	YC420	12	X	X	X	X	X	X	X
665(47)	47	1280x720p	119.88/120Hz	16:9	1:1	RGB/YC444	8	●	X	X	X	X	X	X
665(47)	47	1280x720p	119.88/120Hz	16:9	1:1	RGB/YC444	10	●	X	X	X	X	X	X
665(47)	47	1280x720p	119.88/120Hz	16:9	1:1	RGB/YC444	12	●	X	X	X	X	X	X
665(47)	47	1280x720p	119.88/120Hz	16:9	1:1	YC422	8	●	X	X	X	X	X	X
665(47)	47	1280x720p	119.88/120Hz	16:9	1:1	YC422	10	●	X	X	X	X	X	X
665(47)	47	1280x720p	119.88/120Hz	16:9	1:1	YC422	12	●	X	X	X	X	X	X
665(47)	47	1280x720p	119.88/120Hz	16:9	1:1	YC420	8	X	X	X	X	X	X	X
665(47)	47	1280x720p	119.88/120Hz	16:9	1:1	YC420	10	X	X	X	X	X	X	X
665(47)	47	1280x720p	119.88/120Hz	16:9	1:1	YC420	12	X	X	X	X	X	X	X



附錄 A A223805 Default Timing List

665(47)	47	1280x720p	119.88/120Hz	16:9	1:1	YC420	12	X	X	X	X	X	X	X
666(48)	48	720x480p	119.88/120Hz	4:3	8:9	RGB/YC444	8	●	X	X	X	X	X	X
666(48)	48	720x480p	119.88/120Hz	4:3	8:9	RGB/YC444	10	●	X	X	X	X	X	X
666(48)	48	720x480p	119.88/120Hz	4:3	8:9	RGB/YC444	12	●	X	X	X	X	X	X
666(48)	48	720x480p	119.88/120Hz	4:3	8:9	YC422	8	●	X	X	X	X	X	X
666(48)	48	720x480p	119.88/120Hz	4:3	8:9	YC422	10	●	X	X	X	X	X	X
666(48)	48	720x480p	119.88/120Hz	4:3	8:9	YC422	12	●	X	X	X	X	X	X
666(48)	48	720x480p	119.88/120Hz	4:3	8:9	YC420	8	X	X	X	X	X	X	X
666(48)	48	720x480p	119.88/120Hz	4:3	8:9	YC420	10	X	X	X	X	X	X	X
666(48)	48	720x480p	119.88/120Hz	4:3	8:9	YC420	12	X	X	X	X	X	X	X
667(49)	49	720x480p	119.88/120Hz	16:9	32:27	RGB/YC444	8	●	X	X	X	X	X	X
667(49)	49	720x480p	119.88/120Hz	16:9	32:27	RGB/YC444	10	●	X	X	X	X	X	X
667(49)	49	720x480p	119.88/120Hz	16:9	32:27	RGB/YC444	12	●	X	X	X	X	X	X
667(49)	49	720x480p	119.88/120Hz	16:9	32:27	YC422	8	●	X	X	X	X	X	X
667(49)	49	720x480p	119.88/120Hz	16:9	32:27	YC422	10	●	X	X	X	X	X	X
667(49)	49	720x480p	119.88/120Hz	16:9	32:27	YC422	12	●	X	X	X	X	X	X
667(49)	49	720x480p	119.88/120Hz	16:9	32:27	YC420	8	X	X	X	X	X	X	X
667(49)	49	720x480p	119.88/120Hz	16:9	32:27	YC420	10	X	X	X	X	X	X	X
667(49)	49	720x480p	119.88/120Hz	16:9	32:27	YC420	12	X	X	X	X	X	X	X
668(50)	50	720(1440)x480i	119.88/120Hz	4:3	8:9	RGB/YC444	8	X	X	X	X	X	X	X
668(50)	50	720(1440)x480i	119.88/120Hz	4:3	8:9	RGB/YC444	10	X	X	X	X	X	X	X
668(50)	50	720(1440)x480i	119.88/120Hz	4:3	8:9	RGB/YC444	12	X	X	X	X	X	X	X
668(50)	50	720(1440)x480i	119.88/120Hz	4:3	8:9	YC422	8	X	X	X	X	X	X	X
668(50)	50	720(1440)x480i	119.88/120Hz	4:3	8:9	YC422	10	X	X	X	X	X	X	X
668(50)	50	720(1440)x480i	119.88/120Hz	4:3	8:9	YC422	12	X	X	X	X	X	X	X
668(50)	50	720(1440)x480i	119.88/120Hz	4:3	8:9	YC420	8	X	X	X	X	X	X	X
668(50)	50	720(1440)x480i	119.88/120Hz	4:3	8:9	YC420	10	X	X	X	X	X	X	X
668(50)	50	720(1440)x480i	119.88/120Hz	4:3	8:9	YC420	12	X	X	X	X	X	X	X
669(51)	51	720(1440)x480i	119.88/120Hz	16:9	32:27	RGB/YC444	8	X	X	X	X	X	X	X
669(51)	51	720(1440)x480i	119.88/120Hz	16:9	32:27	RGB/YC444	10	X	X	X	X	X	X	X
669(51)	51	720(1440)x480i	119.88/120Hz	16:9	32:27	RGB/YC444	12	X	X	X	X	X	X	X
669(51)	51	720(1440)x480i	119.88/120Hz	16:9	32:27	YC422	8	X	X	X	X	X	X	X
669(51)	51	720(1440)x480i	119.88/120Hz	16:9	32:27	YC422	10	X	X	X	X	X	X	X
669(51)	51	720(1440)x480i	119.88/120Hz	16:9	32:27	YC422	12	X	X	X	X	X	X	X
669(51)	51	720(1440)x480i	119.88/120Hz	16:9	32:27	YC420	8	X	X	X	X	X	X	X
669(51)	51	720(1440)x480i	119.88/120Hz	16:9	32:27	YC420	10	X	X	X	X	X	X	X
669(51)	51	720(1440)x480i	119.88/120Hz	16:9	32:27	YC420	12	X	X	X	X	X	X	X
670(52)	52	720x576p	200Hz	4:3	16:15	RGB/YC444	8	●	X	X	X	X	X	X

## HDMI 2.1 信號模組 A223805 使用手冊

670(52)	52	720x576p	200Hz	4:3	16:15	RGB/YC444	10	●	X	X	X	X	X	X
670(52)	52	720x576p	200Hz	4:3	16:15	RGB/YC444	12	●	X	X	X	X	X	X
670(52)	52	720x576p	200Hz	4:3	16:15	YC422	8	●	X	X	X	X	X	X
670(52)	52	720x576p	200Hz	4:3	16:15	YC422	10	●	X	X	X	X	X	X
670(52)	52	720x576p	200Hz	4:3	16:15	YC422	12	●	X	X	X	X	X	X
670(52)	52	720x576p	200Hz	4:3	16:15	YC420	8	X	X	X	X	X	X	X
670(52)	52	720x576p	200Hz	4:3	16:15	YC420	10	X	X	X	X	X	X	X
670(52)	52	720x576p	200Hz	4:3	16:15	YC420	12	X	X	X	X	X	X	X
671(53)	53	720x576p	200Hz	16:9	64:45	RGB/YC444	8	●	X	X	X	X	X	X
671(53)	53	720x576p	200Hz	16:9	64:45	RGB/YC444	10	●	X	X	X	X	X	X
671(53)	53	720x576p	200Hz	16:9	64:45	RGB/YC444	12	●	X	X	X	X	X	X
671(53)	53	720x576p	200Hz	16:9	64:45	YC422	8	●	X	X	X	X	X	X
671(53)	53	720x576p	200Hz	16:9	64:45	YC422	10	●	X	X	X	X	X	X
671(53)	53	720x576p	200Hz	16:9	64:45	YC422	12	●	X	X	X	X	X	X
671(53)	53	720x576p	200Hz	16:9	64:45	YC420	8	X	X	X	X	X	X	X
671(53)	53	720x576p	200Hz	16:9	64:45	YC420	10	X	X	X	X	X	X	X
671(53)	53	720x576p	200Hz	16:9	64:45	YC420	12	X	X	X	X	X	X	X
672(54)	54	720(1440)x576i	200Hz	4:3	16:15	RGB/YC444	8	X	X	X	X	X	X	X
672(54)	54	720(1440)x576i	200Hz	4:3	16:15	RGB/YC444	10	X	X	X	X	X	X	X
672(54)	54	720(1440)x576i	200Hz	4:3	16:15	RGB/YC444	12	X	X	X	X	X	X	X
672(54)	54	720(1440)x576i	200Hz	4:3	16:15	YC422	8	X	X	X	X	X	X	X
672(54)	54	720(1440)x576i	200Hz	4:3	16:15	YC422	10	X	X	X	X	X	X	X
672(54)	54	720(1440)x576i	200Hz	4:3	16:15	YC422	12	X	X	X	X	X	X	X
672(54)	54	720(1440)x576i	200Hz	4:3	16:15	YC420	8	X	X	X	X	X	X	X
672(54)	54	720(1440)x576i	200Hz	4:3	16:15	YC420	10	X	X	X	X	X	X	X
672(54)	54	720(1440)x576i	200Hz	4:3	16:15	YC420	12	X	X	X	X	X	X	X
673(55)	55	720(1440)x576i	200Hz	16:9	64:45	RGB/YC444	8	X	X	X	X	X	X	X
673(55)	55	720(1440)x576i	200Hz	16:9	64:45	RGB/YC444	10	X	X	X	X	X	X	X
673(55)	55	720(1440)x576i	200Hz	16:9	64:45	RGB/YC444	12	X	X	X	X	X	X	X
673(55)	55	720(1440)x576i	200Hz	16:9	64:45	YC422	8	X	X	X	X	X	X	X
673(55)	55	720(1440)x576i	200Hz	16:9	64:45	YC422	10	X	X	X	X	X	X	X
673(55)	55	720(1440)x576i	200Hz	16:9	64:45	YC422	12	X	X	X	X	X	X	X
673(55)	55	720(1440)x576i	200Hz	16:9	64:45	YC420	8	X	X	X	X	X	X	X
673(55)	55	720(1440)x576i	200Hz	16:9	64:45	YC420	10	X	X	X	X	X	X	X
673(55)	55	720(1440)x576i	200Hz	16:9	64:45	YC420	12	X	X	X	X	X	X	X
674(56)	56	720x480p	239.76/240Hz	4:3	8:9	RGB/YC444	8	●	X	X	X	X	X	X
674(56)	56	720x480p	239.76/240Hz	4:3	8:9	RGB/YC444	10	●	X	X	X	X	X	X
674(56)	56	720x480p	239.76/240Hz	4:3	8:9	RGB/YC444	12	●	X	X	X	X	X	X

附錄 A A223805 Default Timing List

674(56)	56	720x480p	239.76/240Hz	4:3	8:9	YC422	8	●	X	X	X	X	X	X
674(56)	56	720x480p	239.76/240Hz	4:3	8:9	YC422	10	●	X	X	X	X	X	X
674(56)	56	720x480p	239.76/240Hz	4:3	8:9	YC422	12	●	X	X	X	X	X	X
674(56)	56	720x480p	239.76/240Hz	4:3	8:9	YC420	8	X	X	X	X	X	X	X
674(56)	56	720x480p	239.76/240Hz	4:3	8:9	YC420	10	X	X	X	X	X	X	X
674(56)	56	720x480p	239.76/240Hz	4:3	8:9	YC420	12	X	X	X	X	X	X	X
675(57)	57	720x480p	239.76/240Hz	16:9	32:27	RGB/YC444	8	●	X	X	X	X	X	X
675(57)	57	720x480p	239.76/240Hz	16:9	32:27	RGB/YC444	10	●	X	X	X	X	X	X
675(57)	57	720x480p	239.76/240Hz	16:9	32:27	RGB/YC444	12	●	X	X	X	X	X	X
675(57)	57	720x480p	239.76/240Hz	16:9	32:27	YC422	8	●	X	X	X	X	X	X
675(57)	57	720x480p	239.76/240Hz	16:9	32:27	YC422	10	●	X	X	X	X	X	X
675(57)	57	720x480p	239.76/240Hz	16:9	32:27	YC422	12	●	X	X	X	X	X	X
675(57)	57	720x480p	239.76/240Hz	16:9	32:27	YC420	8	X	X	X	X	X	X	X
675(57)	57	720x480p	239.76/240Hz	16:9	32:27	YC420	10	X	X	X	X	X	X	X
675(57)	57	720x480p	239.76/240Hz	16:9	32:27	YC420	12	X	X	X	X	X	X	X
676(58)	58	720(1440)x480i	239.76/240Hz	4:3	8:9	RGB/YC444	8	X	X	X	X	X	X	X
676(58)	58	720(1440)x480i	239.76/240Hz	4:3	8:9	RGB/YC444	10	X	X	X	X	X	X	X
676(58)	58	720(1440)x480i	239.76/240Hz	4:3	8:9	RGB/YC444	12	X	X	X	X	X	X	X
676(58)	58	720(1440)x480i	239.76/240Hz	4:3	8:9	YC422	8	X	X	X	X	X	X	X
676(58)	58	720(1440)x480i	239.76/240Hz	4:3	8:9	YC422	10	X	X	X	X	X	X	X
676(58)	58	720(1440)x480i	239.76/240Hz	4:3	8:9	YC422	12	X	X	X	X	X	X	X
676(58)	58	720(1440)x480i	239.76/240Hz	4:3	8:9	YC420	8	X	X	X	X	X	X	X
676(58)	58	720(1440)x480i	239.76/240Hz	4:3	8:9	YC420	10	X	X	X	X	X	X	X
676(58)	58	720(1440)x480i	239.76/240Hz	4:3	8:9	YC420	12	X	X	X	X	X	X	X
677(59)	59	720(1440)x480i	239.76/240Hz	16:9	32:27	RGB/YC444	8	X	X	X	X	X	X	X
677(59)	59	720(1440)x480i	239.76/240Hz	16:9	32:27	RGB/YC444	10	X	X	X	X	X	X	X
677(59)	59	720(1440)x480i	239.76/240Hz	16:9	32:27	RGB/YC444	12	X	X	X	X	X	X	X
677(59)	59	720(1440)x480i	239.76/240Hz	16:9	32:27	YC422	8	X	X	X	X	X	X	X
677(59)	59	720(1440)x480i	239.76/240Hz	16:9	32:27	YC422	10	X	X	X	X	X	X	X
677(59)	59	720(1440)x480i	239.76/240Hz	16:9	32:27	YC422	12	X	X	X	X	X	X	X
677(59)	59	720(1440)x480i	239.76/240Hz	16:9	32:27	YC420	8	X	X	X	X	X	X	X
677(59)	59	720(1440)x480i	239.76/240Hz	16:9	32:27	YC420	10	X	X	X	X	X	X	X
677(59)	59	720(1440)x480i	239.76/240Hz	16:9	32:27	YC420	12	X	X	X	X	X	X	X
678(60)	60	1280x720p	23.98Hz/24Hz	16:9	1:1	RGB/YC444	8	●	X	X	X	X	X	X
678(60)	60	1280x720p	23.98Hz/24Hz	16:9	1:1	RGB/YC444	10	●	X	X	X	X	X	X
678(60)	60	1280x720p	23.98Hz/24Hz	16:9	1:1	RGB/YC444	12	●	X	X	X	X	X	X
678(60)	60	1280x720p	23.98Hz/24Hz	16:9	1:1	YC422	8	●	X	X	X	X	X	X
678(60)	60	1280x720p	23.98Hz/24Hz	16:9	1:1	YC422	10	●	X	X	X	X	X	X

## HDMI 2.1 信號模組 A223805 使用手冊

678(60)	60	1280x720p	23.98Hz/24Hz	16:9	1:1	YC422	12	●	X	X	X	X	X	X
678(60)	60	1280x720p	23.98Hz/24Hz	16:9	1:1	YC420	8	X	X	X	X	X	X	X
678(60)	60	1280x720p	23.98Hz/24Hz	16:9	1:1	YC420	10	X	X	X	X	X	X	X
678(60)	60	1280x720p	23.98Hz/24Hz	16:9	1:1	YC420	12	X	X	X	X	X	X	X
679(61)	61	1280x720p	25Hz	16:9	1:1	RGB/YC444	8	●	X	X	X	X	X	X
679(61)	61	1280x720p	25Hz	16:9	1:1	RGB/YC444	10	●	X	X	X	X	X	X
679(61)	61	1280x720p	25Hz	16:9	1:1	RGB/YC444	12	●	X	X	X	X	X	X
679(61)	61	1280x720p	25Hz	16:9	1:1	YC422	8	●	X	X	X	X	X	X
679(61)	61	1280x720p	25Hz	16:9	1:1	YC422	10	●	X	X	X	X	X	X
679(61)	61	1280x720p	25Hz	16:9	1:1	YC422	12	●	X	X	X	X	X	X
679(61)	61	1280x720p	25Hz	16:9	1:1	YC420	8	X	X	X	X	X	X	X
679(61)	61	1280x720p	25Hz	16:9	1:1	YC420	10	X	X	X	X	X	X	X
679(61)	61	1280x720p	25Hz	16:9	1:1	YC420	12	X	X	X	X	X	X	X
680(62)	62	1280x720p	29.97Hz/30Hz	16:9	1:1	RGB/YC444	8	●	X	X	X	X	X	X
680(62)	62	1280x720p	29.97Hz/30Hz	16:9	1:1	RGB/YC444	10	●	X	X	X	X	X	X
680(62)	62	1280x720p	29.97Hz/30Hz	16:9	1:1	RGB/YC444	12	●	X	X	X	X	X	X
680(62)	62	1280x720p	29.97Hz/30Hz	16:9	1:1	YC422	8	●	X	X	X	X	X	X
680(62)	62	1280x720p	29.97Hz/30Hz	16:9	1:1	YC422	10	●	X	X	X	X	X	X
680(62)	62	1280x720p	29.97Hz/30Hz	16:9	1:1	YC422	12	●	X	X	X	X	X	X
680(62)	62	1280x720p	29.97Hz/30Hz	16:9	1:1	YC420	8	X	X	X	X	X	X	X
680(62)	62	1280x720p	29.97Hz/30Hz	16:9	1:1	YC420	10	X	X	X	X	X	X	X
680(62)	62	1280x720p	29.97Hz/30Hz	16:9	1:1	YC420	12	X	X	X	X	X	X	X
682(63)	63	1920x1080p	119.88/120Hz	16:9	1:1	RGB/YC444	8	●	●	●	●	●	●	●
682(63)	63	1920x1080p	119.88/120Hz	16:9	1:1	RGB/YC444	10	●	●	●	●	●	●	●
682(63)	63	1920x1080p	119.88/120Hz	16:9	1:1	RGB/YC444	12	●	●	●	●	●	●	●
682(63)	63	1920x1080p	119.88/120Hz	16:9	1:1	YC422	8	●	●	●	●	●	●	●
682(63)	63	1920x1080p	119.88/120Hz	16:9	1:1	YC422	10	●	●	●	●	●	●	●
682(63)	63	1920x1080p	119.88/120Hz	16:9	1:1	YC422	12	●	●	●	●	●	●	●
682(63)	63	1920x1080p	119.88/120Hz	16:9	1:1	YC420	8	X	X	X	X	X	X	X
682(63)	63	1920x1080p	119.88/120Hz	16:9	1:1	YC420	10	X	X	X	X	X	X	X
682(63)	63	1920x1080p	119.88/120Hz	16:9	1:1	YC420	12	X	X	X	X	X	X	X
681(64)	64	1920x1080p	100Hz	16:9	1:1	RGB/YC444	8	●	●	●	●	●	●	●
681(64)	64	1920x1080p	100Hz	16:9	1:1	RGB/YC444	10	●	X	X	X	X	X	X
681(64)	64	1920x1080p	100Hz	16:9	1:1	RGB/YC444	12	●	X	●	●	●	●	●
681(64)	64	1920x1080p	100Hz	16:9	1:1	YC422	8	●	●	●	●	●	●	●
681(64)	64	1920x1080p	100Hz	16:9	1:1	YC422	10	●	●	●	●	●	●	●
681(64)	64	1920x1080p	100Hz	16:9	1:1	YC422	12	●	●	●	●	●	●	●
681(64)	64	1920x1080p	100Hz	16:9	1:1	YC420	8	X	X	X	X	X	X	X

附錄 A A223805 Default Timing List

681(64)	64	1920x1080p	100Hz	16:9	1:1	YC420	10	X	X	X	X	X	X	X
681(64)	64	1920x1080p	100Hz	16:9	1:1	YC420	12	X	X	X	X	X	X	X
689(65)	65	1280x720p	23.98Hz/24Hz	64:27	4:3	RGB/YC444	8	●	X	X	X	X	X	X
689(65)	65	1280x720p	23.98Hz/24Hz	64:27	4:3	RGB/YC444	10	●	X	X	X	X	X	X
689(65)	65	1280x720p	23.98Hz/24Hz	64:27	4:3	RGB/YC444	12	●	X	X	X	X	X	X
689(65)	65	1280x720p	23.98Hz/24Hz	64:27	4:3	YC422	8	●	X	X	X	X	X	X
689(65)	65	1280x720p	23.98Hz/24Hz	64:27	4:3	YC422	10	●	X	X	X	X	X	X
689(65)	65	1280x720p	23.98Hz/24Hz	64:27	4:3	YC422	12	●	X	X	X	X	X	X
689(65)	65	1280x720p	23.98Hz/24Hz	64:27	4:3	YC420	8	X	X	X	X	X	X	X
689(65)	65	1280x720p	23.98Hz/24Hz	64:27	4:3	YC420	10	X	X	X	X	X	X	X
689(65)	65	1280x720p	23.98Hz/24Hz	64:27	4:3	YC420	12	X	X	X	X	X	X	X
690(66)	66	1280x720p	25Hz	64:27	4:3	RGB/YC444	8	●	X	X	X	X	X	X
690(66)	66	1280x720p	25Hz	64:27	4:3	RGB/YC444	10	●	X	X	X	X	X	X
690(66)	66	1280x720p	25Hz	64:27	4:3	RGB/YC444	12	●	X	X	X	X	X	X
690(66)	66	1280x720p	25Hz	64:27	4:3	YC422	8	●	X	X	X	X	X	X
690(66)	66	1280x720p	25Hz	64:27	4:3	YC422	10	●	X	X	X	X	X	X
690(66)	66	1280x720p	25Hz	64:27	4:3	YC422	12	●	X	X	X	X	X	X
690(66)	66	1280x720p	25Hz	64:27	4:3	YC420	8	X	X	X	X	X	X	X
690(66)	66	1280x720p	25Hz	64:27	4:3	YC420	10	X	X	X	X	X	X	X
690(66)	66	1280x720p	25Hz	64:27	4:3	YC420	12	X	X	X	X	X	X	X
691(67)	67	1280x720p	29.97Hz/30Hz	64:27	4:3	RGB/YC444	8	●	X	X	X	X	X	X
691(67)	67	1280x720p	29.97Hz/30Hz	64:27	4:3	RGB/YC444	10	●	X	X	X	X	X	X
691(67)	67	1280x720p	29.97Hz/30Hz	64:27	4:3	RGB/YC444	12	●	X	X	X	X	X	X
691(67)	67	1280x720p	29.97Hz/30Hz	64:27	4:3	YC422	8	●	X	X	X	X	X	X
691(67)	67	1280x720p	29.97Hz/30Hz	64:27	4:3	YC422	10	●	X	X	X	X	X	X
691(67)	67	1280x720p	29.97Hz/30Hz	64:27	4:3	YC422	12	●	X	X	X	X	X	X
691(67)	67	1280x720p	29.97Hz/30Hz	64:27	4:3	YC420	8	X	X	X	X	X	X	X
691(67)	67	1280x720p	29.97Hz/30Hz	64:27	4:3	YC420	10	X	X	X	X	X	X	X
691(67)	67	1280x720p	29.97Hz/30Hz	64:27	4:3	YC420	12	X	X	X	X	X	X	X
692(68)	68	1280x720p	50Hz	64:27	4:3	RGB/YC444	8	●	X	X	X	X	X	X
692(68)	68	1280x720p	50Hz	64:27	4:3	RGB/YC444	10	●	X	X	X	X	X	X
692(68)	68	1280x720p	50Hz	64:27	4:3	RGB/YC444	12	●	X	X	X	X	X	X
692(68)	68	1280x720p	50Hz	64:27	4:3	YC422	8	●	X	X	X	X	X	X
692(68)	68	1280x720p	50Hz	64:27	4:3	YC422	10	●	X	X	X	X	X	X
692(68)	68	1280x720p	50Hz	64:27	4:3	YC422	12	●	X	X	X	X	X	X
692(68)	68	1280x720p	50Hz	64:27	4:3	YC420	8	X	X	X	X	X	X	X
692(68)	68	1280x720p	50Hz	64:27	4:3	YC420	10	X	X	X	X	X	X	X
692(68)	68	1280x720p	50Hz	64:27	4:3	YC420	12	X	X	X	X	X	X	X

## HDMI 2.1 信號模組 A223805 使用手冊

693(69)	69	1280x720p	59.94Hz/60Hz	64:27	4:3	RGB/YC444	8	●	X	X	X	X	X	X
693(69)	69	1280x720p	59.94Hz/60Hz	64:27	4:3	RGB/YC444	10	●	X	X	X	X	X	X
693(69)	69	1280x720p	59.94Hz/60Hz	64:27	4:3	RGB/YC444	12	●	X	X	X	X	X	X
693(69)	69	1280x720p	59.94Hz/60Hz	64:27	4:3	YC422	8	●	X	X	X	X	X	X
693(69)	69	1280x720p	59.94Hz/60Hz	64:27	4:3	YC422	10	●	X	X	X	X	X	X
693(69)	69	1280x720p	59.94Hz/60Hz	64:27	4:3	YC422	12	●	X	X	X	X	X	X
693(69)	69	1280x720p	59.94Hz/60Hz	64:27	4:3	YC420	8	X	X	X	X	X	X	X
693(69)	69	1280x720p	59.94Hz/60Hz	64:27	4:3	YC420	10	X	X	X	X	X	X	X
693(69)	69	1280x720p	59.94Hz/60Hz	64:27	4:3	YC420	12	X	X	X	X	X	X	X
694(70)	70	1280x720p	100Hz	64:27	4:3	RGB/YC444	8	●	X	X	X	X	X	X
694(70)	70	1280x720p	100Hz	64:27	4:3	RGB/YC444	10	●	X	X	X	X	X	X
694(70)	70	1280x720p	100Hz	64:27	4:3	RGB/YC444	12	●	X	X	X	X	X	X
694(70)	70	1280x720p	100Hz	64:27	4:3	YC422	8	●	X	X	X	X	X	X
694(70)	70	1280x720p	100Hz	64:27	4:3	YC422	10	●	X	X	X	X	X	X
694(70)	70	1280x720p	100Hz	64:27	4:3	YC422	12	●	X	X	X	X	X	X
694(70)	70	1280x720p	100Hz	64:27	4:3	YC420	8	X	X	X	X	X	X	X
694(70)	70	1280x720p	100Hz	64:27	4:3	YC420	10	X	X	X	X	X	X	X
694(70)	70	1280x720p	100Hz	64:27	4:3	YC420	12	X	X	X	X	X	X	X
695(71)	71	1280x720p	119.88/120Hz	64:27	4:3	RGB/YC444	8	●	X	X	X	X	X	X
695(71)	71	1280x720p	119.88/120Hz	64:27	4:3	RGB/YC444	10	●	X	X	X	X	X	X
695(71)	71	1280x720p	119.88/120Hz	64:27	4:3	RGB/YC444	12	●	X	X	X	X	X	X
695(71)	71	1280x720p	119.88/120Hz	64:27	4:3	YC422	8	●	X	X	X	X	X	X
695(71)	71	1280x720p	119.88/120Hz	64:27	4:3	YC422	10	●	X	X	X	X	X	X
695(71)	71	1280x720p	119.88/120Hz	64:27	4:3	YC422	12	●	X	X	X	X	X	X
695(71)	71	1280x720p	119.88/120Hz	64:27	4:3	YC420	8	X	X	X	X	X	X	X
695(71)	71	1280x720p	119.88/120Hz	64:27	4:3	YC420	10	X	X	X	X	X	X	X
695(71)	71	1280x720p	119.88/120Hz	64:27	4:3	YC420	12	X	X	X	X	X	X	X
696(72)	72	1920x1080p	23.98Hz/24Hz	64:27	4:3	RGB/YC444	8	●	X	X	X	X	X	X
696(72)	72	1920x1080p	23.98Hz/24Hz	64:27	4:3	RGB/YC444	10	●	X	X	X	X	X	X
696(72)	72	1920x1080p	23.98Hz/24Hz	64:27	4:3	RGB/YC444	12	●	X	X	X	X	X	X
696(72)	72	1920x1080p	23.98Hz/24Hz	64:27	4:3	YC422	8	●	X	X	X	X	X	X
696(72)	72	1920x1080p	23.98Hz/24Hz	64:27	4:3	YC422	10	●	X	X	X	X	X	X
696(72)	72	1920x1080p	23.98Hz/24Hz	64:27	4:3	YC422	12	●	X	X	X	X	X	X
696(72)	72	1920x1080p	23.98Hz/24Hz	64:27	4:3	YC420	8	X	X	X	X	X	X	X
696(72)	72	1920x1080p	23.98Hz/24Hz	64:27	4:3	YC420	10	X	X	X	X	X	X	X
696(72)	72	1920x1080p	23.98Hz/24Hz	64:27	4:3	YC420	12	X	X	X	X	X	X	X
697(73)	73	1920x1080p	25Hz	64:27	4:3	RGB/YC444	8	●	X	X	X	X	X	X
697(73)	73	1920x1080p	25Hz	64:27	4:3	RGB/YC444	10	●	X	X	X	X	X	X

附錄 A A223805 Default Timing List

697(73)	73	1920x1080p	25Hz	64:27	4:3	RGB/YC444	12	●	X	X	X	X	X	X
697(73)	73	1920x1080p	25Hz	64:27	4:3	YC422	8	●	X	X	X	X	X	X
697(73)	73	1920x1080p	25Hz	64:27	4:3	YC422	10	●	X	X	X	X	X	X
697(73)	73	1920x1080p	25Hz	64:27	4:3	YC422	12	●	X	X	X	X	X	X
697(73)	73	1920x1080p	25Hz	64:27	4:3	YC420	8	X	X	X	X	X	X	X
697(73)	73	1920x1080p	25Hz	64:27	4:3	YC420	10	X	X	X	X	X	X	X
697(73)	73	1920x1080p	25Hz	64:27	4:3	YC420	12	X	X	X	X	X	X	X
698(74)	74	1920x1080p	29.97Hz/30Hz	64:27	4:3	RGB/YC444	8	●	●	●	●	●	●	●
698(74)	74	1920x1080p	29.97Hz/30Hz	64:27	4:3	RGB/YC444	10	●	●	●	●	●	●	●
698(74)	74	1920x1080p	29.97Hz/30Hz	64:27	4:3	RGB/YC444	12	●	●	●	●	●	●	●
698(74)	74	1920x1080p	29.97Hz/30Hz	64:27	4:3	YC422	8	●	●	●	●	●	●	●
698(74)	74	1920x1080p	29.97Hz/30Hz	64:27	4:3	YC422	10	●	●	●	●	●	●	●
698(74)	74	1920x1080p	29.97Hz/30Hz	64:27	4:3	YC422	12	●	●	●	●	●	●	●
698(74)	74	1920x1080p	29.97Hz/30Hz	64:27	4:3	YC420	8	X	X	X	X	X	X	X
698(74)	74	1920x1080p	29.97Hz/30Hz	64:27	4:3	YC420	10	X	X	X	X	X	X	X
698(74)	74	1920x1080p	29.97Hz/30Hz	64:27	4:3	YC420	12	X	X	X	X	X	X	X
699(75)	75	1920x1080p	50Hz	64:27	4:3	RGB/YC444	8	●	X	X	X	X	X	X
699(75)	75	1920x1080p	50Hz	64:27	4:3	RGB/YC444	10	●	X	X	X	X	X	X
699(75)	75	1920x1080p	50Hz	64:27	4:3	RGB/YC444	12	●	X	X	X	X	X	X
699(75)	75	1920x1080p	50Hz	64:27	4:3	YC422	8	●	X	X	X	X	X	X
699(75)	75	1920x1080p	50Hz	64:27	4:3	YC422	10	●	X	X	X	X	X	X
699(75)	75	1920x1080p	50Hz	64:27	4:3	YC422	12	●	X	X	X	X	X	X
699(75)	75	1920x1080p	50Hz	64:27	4:3	YC420	8	X	X	X	X	X	X	X
699(75)	75	1920x1080p	50Hz	64:27	4:3	YC420	10	X	X	X	X	X	X	X
699(75)	75	1920x1080p	50Hz	64:27	4:3	YC420	12	X	X	X	X	X	X	X
700(76)	76	1920x1080p	59.94Hz/60Hz	64:27	4:3	RGB/YC444	8	●	●	●	●	●	●	●
700(76)	76	1920x1080p	59.94Hz/60Hz	64:27	4:3	RGB/YC444	10	●	●	●	●	●	●	●
700(76)	76	1920x1080p	59.94Hz/60Hz	64:27	4:3	RGB/YC444	12	●	●	●	●	●	●	●
700(76)	76	1920x1080p	59.94Hz/60Hz	64:27	4:3	YC422	8	●	●	●	●	●	●	●
700(76)	76	1920x1080p	59.94Hz/60Hz	64:27	4:3	YC422	10	●	●	●	●	●	●	●
700(76)	76	1920x1080p	59.94Hz/60Hz	64:27	4:3	YC422	12	●	●	●	●	●	●	●
700(76)	76	1920x1080p	59.94Hz/60Hz	64:27	4:3	YC420	8	X	X	X	X	X	X	X
700(76)	76	1920x1080p	59.94Hz/60Hz	64:27	4:3	YC420	10	X	X	X	X	X	X	X
700(76)	76	1920x1080p	59.94Hz/60Hz	64:27	4:3	YC420	12	X	X	X	X	X	X	X
701(77)	77	1920x1080p	100Hz	64:27	4:3	RGB/YC444	8	●	●	●	●	●	●	●
701(77)	77	1920x1080p	100Hz	64:27	4:3	RGB/YC444	10	X	X	X	X	X	X	X
701(77)	77	1920x1080p	100Hz	64:27	4:3	RGB/YC444	12	●	X	●	●	●	●	●
701(77)	77	1920x1080p	100Hz	64:27	4:3	YC422	8	●	●	●	●	●	●	●

## HDMI 2.1 信號模組 A223805 使用手冊

701(77)	77	1920x1080p	100Hz	64:27	4:3	YC422	10	●	●	●	●	●	●	●
701(77)	77	1920x1080p	100Hz	64:27	4:3	YC422	12	●	●	●	●	●	●	●
701(77)	77	1920x1080p	100Hz	64:27	4:3	YC420	8	X	X	X	X	X	X	X
701(77)	77	1920x1080p	100Hz	64:27	4:3	YC420	10	X	X	X	X	X	X	X
701(77)	77	1920x1080p	100Hz	64:27	4:3	YC420	12	X	X	X	X	X	X	X
702(78)	78	1920x1080p	119.88/120Hz	64:27	4:3	RGB/YC444	8	●	●	●	●	●	●	●
702(78)	78	1920x1080p	119.88/120Hz	64:27	4:3	RGB/YC444	10	●	X	●	●	●	●	●
702(78)	78	1920x1080p	119.88/120Hz	64:27	4:3	RGB/YC444	12	●	X	●	●	●	●	●
702(78)	78	1920x1080p	119.88/120Hz	64:27	4:3	YC422	8	●	●	●	●	●	●	●
702(78)	78	1920x1080p	119.88/120Hz	64:27	4:3	YC422	10	●	●	●	●	●	●	●
702(78)	78	1920x1080p	119.88/120Hz	64:27	4:3	YC422	12	●	●	●	●	●	●	●
702(78)	78	1920x1080p	119.88/120Hz	64:27	4:3	YC420	8	X	X	X	X	X	X	X
702(78)	78	1920x1080p	119.88/120Hz	64:27	4:3	YC420	10	X	X	X	X	X	X	X
702(78)	78	1920x1080p	119.88/120Hz	64:27	4:3	YC420	12	X	X	X	X	X	X	X
703(79)	79	1680x720p	23.98Hz/24Hz	64:27	64:63	RGB/YC444	8	●	X	X	X	X	X	X
703(79)	79	1680x720p	23.98Hz/24Hz	64:27	64:63	RGB/YC444	10	●	X	X	X	X	X	X
703(79)	79	1680x720p	23.98Hz/24Hz	64:27	64:63	RGB/YC444	12	●	X	X	X	X	X	X
703(79)	79	1680x720p	23.98Hz/24Hz	64:27	64:63	YC422	8	●	X	X	X	X	X	X
703(79)	79	1680x720p	23.98Hz/24Hz	64:27	64:63	YC422	10	●	X	X	X	X	X	X
703(79)	79	1680x720p	23.98Hz/24Hz	64:27	64:63	YC422	12	●	X	X	X	X	X	X
703(79)	79	1680x720p	23.98Hz/24Hz	64:27	64:63	YC420	8	X	X	X	X	X	X	X
703(79)	79	1680x720p	23.98Hz/24Hz	64:27	64:63	YC420	10	X	X	X	X	X	X	X
703(79)	79	1680x720p	23.98Hz/24Hz	64:27	64:63	YC420	12	X	X	X	X	X	X	X
704(80)	80	1680x720p	25Hz	64:27	64:63	RGB/YC444	8	●	X	X	X	X	X	X
704(80)	80	1680x720p	25Hz	64:27	64:63	RGB/YC444	10	●	X	X	X	X	X	X
704(80)	80	1680x720p	25Hz	64:27	64:63	RGB/YC444	12	●	X	X	X	X	X	X
704(80)	80	1680x720p	25Hz	64:27	64:63	YC422	8	●	X	X	X	X	X	X
704(80)	80	1680x720p	25Hz	64:27	64:63	YC422	10	●	X	X	X	X	X	X
704(80)	80	1680x720p	25Hz	64:27	64:63	YC422	12	●	X	X	X	X	X	X
704(80)	80	1680x720p	25Hz	64:27	64:63	YC420	8	X	X	X	X	X	X	X
704(80)	80	1680x720p	25Hz	64:27	64:63	YC420	10	X	X	X	X	X	X	X
704(80)	80	1680x720p	25Hz	64:27	64:63	YC420	12	X	X	X	X	X	X	X
705(81)	81	1680x720p	29.97Hz/30Hz	64:27	64:63	RGB/YC444	8	●	X	X	X	X	X	X
705(81)	81	1680x720p	29.97Hz/30Hz	64:27	64:63	RGB/YC444	10	●	X	X	X	X	X	X
705(81)	81	1680x720p	29.97Hz/30Hz	64:27	64:63	RGB/YC444	12	●	X	X	X	X	X	X
705(81)	81	1680x720p	29.97Hz/30Hz	64:27	64:63	YC422	8	●	X	X	X	X	X	X
705(81)	81	1680x720p	29.97Hz/30Hz	64:27	64:63	YC422	10	●	X	X	X	X	X	X
705(81)	81	1680x720p	29.97Hz/30Hz	64:27	64:63	YC422	12	●	X	X	X	X	X	X



附錄 A A223805 Default Timing List

705(81)	81	1680x720p	29.97Hz/30Hz	64:27	64:63	YC420	8	X	X	X	X	X	X	X
705(81)	81	1680x720p	29.97Hz/30Hz	64:27	64:63	YC420	10	X	X	X	X	X	X	X
705(81)	81	1680x720p	29.97Hz/30Hz	64:27	64:63	YC420	12	X	X	X	X	X	X	X
706(82)	82	1680x720p	50Hz	64:27	64:63	RGB/YC444	8	●	X	X	X	X	X	X
706(82)	82	1680x720p	50Hz	64:27	64:63	RGB/YC444	10	●	X	X	X	X	X	X
706(82)	82	1680x720p	50Hz	64:27	64:63	RGB/YC444	12	●	X	X	X	X	X	X
706(82)	82	1680x720p	50Hz	64:27	64:63	YC422	8	●	X	X	X	X	X	X
706(82)	82	1680x720p	50Hz	64:27	64:63	YC422	10	●	X	X	X	X	X	X
706(82)	82	1680x720p	50Hz	64:27	64:63	YC422	12	●	X	X	X	X	X	X
706(82)	82	1680x720p	50Hz	64:27	64:63	YC420	8	X	X	X	X	X	X	X
706(82)	82	1680x720p	50Hz	64:27	64:63	YC420	10	X	X	X	X	X	X	X
706(82)	82	1680x720p	50Hz	64:27	64:63	YC420	12	X	X	X	X	X	X	X
707(83)	83	1680x720p	59.94Hz/60Hz	64:27	64:63	RGB/YC444	8	●	X	X	X	X	X	X
707(83)	83	1680x720p	59.94Hz/60Hz	64:27	64:63	RGB/YC444	10	●	X	X	X	X	X	X
707(83)	83	1680x720p	59.94Hz/60Hz	64:27	64:63	RGB/YC444	12	●	X	X	X	X	X	X
707(83)	83	1680x720p	59.94Hz/60Hz	64:27	64:63	YC422	8	●	X	X	X	X	X	X
707(83)	83	1680x720p	59.94Hz/60Hz	64:27	64:63	YC422	10	●	X	X	X	X	X	X
707(83)	83	1680x720p	59.94Hz/60Hz	64:27	64:63	YC422	12	●	X	X	X	X	X	X
707(83)	83	1680x720p	59.94Hz/60Hz	64:27	64:63	YC420	8	X	X	X	X	X	X	X
707(83)	83	1680x720p	59.94Hz/60Hz	64:27	64:63	YC420	10	X	X	X	X	X	X	X
707(83)	83	1680x720p	59.94Hz/60Hz	64:27	64:63	YC420	12	X	X	X	X	X	X	X
708(84)	84	1680x720p	100Hz	64:27	64:63	RGB/YC444	8	●	X	X	X	X	X	X
708(84)	84	1680x720p	100Hz	64:27	64:63	RGB/YC444	10	●	X	X	X	X	X	X
708(84)	84	1680x720p	100Hz	64:27	64:63	RGB/YC444	12	●	X	X	X	X	X	X
708(84)	84	1680x720p	100Hz	64:27	64:63	YC422	8	●	X	X	X	X	X	X
708(84)	84	1680x720p	100Hz	64:27	64:63	YC422	10	●	X	X	X	X	X	X
708(84)	84	1680x720p	100Hz	64:27	64:63	YC422	12	●	X	X	X	X	X	X
708(84)	84	1680x720p	100Hz	64:27	64:63	YC420	8	X	X	X	X	X	X	X
708(84)	84	1680x720p	100Hz	64:27	64:63	YC420	10	X	X	X	X	X	X	X
708(84)	84	1680x720p	100Hz	64:27	64:63	YC420	12	X	X	X	X	X	X	X
709(85)	85	1680x720p	119.88/120Hz	64:27	64:63	RGB/YC444	8	●	X	X	X	X	X	X
709(85)	85	1680x720p	119.88/120Hz	64:27	64:63	RGB/YC444	10	●	X	X	X	X	X	X
709(85)	85	1680x720p	119.88/120Hz	64:27	64:63	RGB/YC444	12	●	X	X	X	X	X	X
709(85)	85	1680x720p	119.88/120Hz	64:27	64:63	YC422	8	●	X	X	X	X	X	X
709(85)	85	1680x720p	119.88/120Hz	64:27	64:63	YC422	10	●	X	X	X	X	X	X
709(85)	85	1680x720p	119.88/120Hz	64:27	64:63	YC422	12	●	X	X	X	X	X	X
709(85)	85	1680x720p	119.88/120Hz	64:27	64:63	YC420	8	X	X	X	X	X	X	X
709(85)	85	1680x720p	119.88/120Hz	64:27	64:63	YC420	10	X	X	X	X	X	X	X

## HDMI 2.1 信號模組 A223805 使用手冊

709(85)	85	1680x720p	119.88/120Hz	64:27	64:63	YC420	12	X	X	X	X	X	X	X
710(86)	86	2560x1080p	23.98Hz/24Hz	64:27	1:1	RGB/YC444	8	●	X	X	X	X	X	X
710(86)	86	2560x1080p	23.98Hz/24Hz	64:27	1:1	RGB/YC444	10	●	X	X	X	X	X	X
710(86)	86	2560x1080p	23.98Hz/24Hz	64:27	1:1	RGB/YC444	12	●	X	X	X	X	X	X
710(86)	86	2560x1080p	23.98Hz/24Hz	64:27	1:1	YC422	8	●	X	X	X	X	X	X
710(86)	86	2560x1080p	23.98Hz/24Hz	64:27	1:1	YC422	10	●	X	X	X	X	X	X
710(86)	86	2560x1080p	23.98Hz/24Hz	64:27	1:1	YC422	12	●	X	X	X	X	X	X
710(86)	86	2560x1080p	23.98Hz/24Hz	64:27	1:1	YC420	8	X	X	X	X	X	X	X
710(86)	86	2560x1080p	23.98Hz/24Hz	64:27	1:1	YC420	10	X	X	X	X	X	X	X
710(86)	86	2560x1080p	23.98Hz/24Hz	64:27	1:1	YC420	12	X	X	X	X	X	X	X
711(87)	87	2560x1080p	25Hz	64:27	1:1	RGB/YC444	8	●	X	X	X	X	X	X
711(87)	87	2560x1080p	25Hz	64:27	1:1	RGB/YC444	10	●	X	X	X	X	X	X
711(87)	87	2560x1080p	25Hz	64:27	1:1	RGB/YC444	12	●	X	X	X	X	X	X
711(87)	87	2560x1080p	25Hz	64:27	1:1	YC422	8	●	X	X	X	X	X	X
711(87)	87	2560x1080p	25Hz	64:27	1:1	YC422	10	●	X	X	X	X	X	X
711(87)	87	2560x1080p	25Hz	64:27	1:1	YC422	12	●	X	X	X	X	X	X
711(87)	87	2560x1080p	25Hz	64:27	1:1	YC420	8	X	X	X	X	X	X	X
711(87)	87	2560x1080p	25Hz	64:27	1:1	YC420	10	X	X	X	X	X	X	X
711(87)	87	2560x1080p	25Hz	64:27	1:1	YC420	12	X	X	X	X	X	X	X
712(88)	88	2560x1080p	29.97Hz/30Hz	64:27	1:1	RGB/YC444	8	●	X	X	X	X	X	X
712(88)	88	2560x1080p	29.97Hz/30Hz	64:27	1:1	RGB/YC444	10	●	X	X	X	X	X	X
712(88)	88	2560x1080p	29.97Hz/30Hz	64:27	1:1	RGB/YC444	12	●	X	X	X	X	X	X
712(88)	88	2560x1080p	29.97Hz/30Hz	64:27	1:1	YC422	8	●	X	X	X	X	X	X
712(88)	88	2560x1080p	29.97Hz/30Hz	64:27	1:1	YC422	10	●	X	X	X	X	X	X
712(88)	88	2560x1080p	29.97Hz/30Hz	64:27	1:1	YC422	12	●	X	X	X	X	X	X
712(88)	88	2560x1080p	29.97Hz/30Hz	64:27	1:1	YC420	8	X	X	X	X	X	X	X
712(88)	88	2560x1080p	29.97Hz/30Hz	64:27	1:1	YC420	10	X	X	X	X	X	X	X
712(88)	88	2560x1080p	29.97Hz/30Hz	64:27	1:1	YC420	12	X	X	X	X	X	X	X
713(89)	89	2560x1080p	50Hz	64:27	1:1	RGB/YC444	8	●	X	X	X	X	X	X
713(89)	89	2560x1080p	50Hz	64:27	1:1	RGB/YC444	10	●	X	X	X	X	X	X
713(89)	89	2560x1080p	50Hz	64:27	1:1	RGB/YC444	12	●	X	X	X	X	X	X
713(89)	89	2560x1080p	50Hz	64:27	1:1	YC422	8	●	X	X	X	X	X	X
713(89)	89	2560x1080p	50Hz	64:27	1:1	YC422	10	●	X	X	X	X	X	X
713(89)	89	2560x1080p	50Hz	64:27	1:1	YC422	12	●	X	X	X	X	X	X
713(89)	89	2560x1080p	50Hz	64:27	1:1	YC420	8	X	X	X	X	X	X	X
713(89)	89	2560x1080p	50Hz	64:27	1:1	YC420	10	X	X	X	X	X	X	X
713(89)	89	2560x1080p	50Hz	64:27	1:1	YC420	12	X	X	X	X	X	X	X
714(90)	90	2560x1080p	59.94Hz/60Hz	64:27	1:1	RGB/YC444	8	●	X	X	X	X	X	X

附錄 A A223805 Default Timing List

714(90)	90	2560x1080p	59.94Hz/60Hz	64:27	1:1	RGB/YC444	10	●	X	X	X	X	X	X
714(90)	90	2560x1080p	59.94Hz/60Hz	64:27	1:1	RGB/YC444	12	●	X	X	X	X	X	X
714(90)	90	2560x1080p	59.94Hz/60Hz	64:27	1:1	YC422	8	●	X	X	X	X	X	X
714(90)	90	2560x1080p	59.94Hz/60Hz	64:27	1:1	YC422	10	●	X	X	X	X	X	X
714(90)	90	2560x1080p	59.94Hz/60Hz	64:27	1:1	YC422	12	●	X	X	X	X	X	X
714(90)	90	2560x1080p	59.94Hz/60Hz	64:27	1:1	YC420	8	X	X	X	X	X	X	X
714(90)	90	2560x1080p	59.94Hz/60Hz	64:27	1:1	YC420	10	X	X	X	X	X	X	X
714(90)	90	2560x1080p	59.94Hz/60Hz	64:27	1:1	YC420	12	X	X	X	X	X	X	X
717(93)	93	3840x2160p	23.98Hz/24Hz	64:27	1:1	RGB/YC444	8	●	●	●	●	●	●	●
717(93)	93	3840x2160p	23.98Hz/24Hz	64:27	1:1	RGB/YC444	10	●	X	●	●	●	●	●
717(93)	93	3840x2160p	23.98Hz/24Hz	64:27	1:1	RGB/YC444	12	●	X	●	●	●	●	●
717(93)	93	3840x2160p	23.98Hz/24Hz	64:27	1:1	YC422	8	●	●	●	●	●	●	●
717(93)	93	3840x2160p	23.98Hz/24Hz	64:27	1:1	YC422	10	●	●	●	●	●	●	●
717(93)	93	3840x2160p	23.98Hz/24Hz	64:27	1:1	YC422	12	●	●	●	●	●	●	●
717(93)	93	3840x2160p	23.98Hz/24Hz	64:27	1:1	YC420	8	X	X	X	X	X	X	X
717(93)	93	3840x2160p	23.98Hz/24Hz	64:27	1:1	YC420	10	X	X	X	X	X	X	X
717(93)	93	3840x2160p	23.98Hz/24Hz	64:27	1:1	YC420	12	X	X	X	X	X	X	X
718(94)	94	3840x2160p	25Hz	64:27	1:1	RGB/YC444	8	●	●	●	●	●	●	●
718(94)	94	3840x2160p	25Hz	64:27	1:1	RGB/YC444	10	●	X	●	●	●	●	●
718(94)	94	3840x2160p	25Hz	64:27	1:1	RGB/YC444	12	●	X	●	●	●	●	●
718(94)	94	3840x2160p	25Hz	64:27	1:1	YC422	8	●	X	X	X	X	X	X
718(94)	94	3840x2160p	25Hz	64:27	1:1	YC422	10	●	X	X	X	X	X	X
718(94)	94	3840x2160p	25Hz	64:27	1:1	YC422	12	●	●	●	●	●	●	●
718(94)	94	3840x2160p	25Hz	64:27	1:1	YC420	8	X	X	X	X	X	X	X
718(94)	94	3840x2160p	25Hz	64:27	1:1	YC420	10	X	X	X	X	X	X	X
718(94)	94	3840x2160p	25Hz	64:27	1:1	YC420	12	X	X	X	X	X	X	X
719(95)	95	3840x2160p	29.97Hz/30Hz	64:27	1:1	RGB/YC444	8	●	●	●	●	●	●	●
719(95)	95	3840x2160p	29.97Hz/30Hz	64:27	1:1	RGB/YC444	10	●	X	●	●	●	●	●
719(95)	95	3840x2160p	29.97Hz/30Hz	64:27	1:1	RGB/YC444	12	●	X	●	●	●	●	●
719(95)	95	3840x2160p	29.97Hz/30Hz	64:27	1:1	YC422	8	●	●	●	●	●	●	●
719(95)	95	3840x2160p	29.97Hz/30Hz	64:27	1:1	YC422	10	●	●	●	●	●	●	●
719(95)	95	3840x2160p	29.97Hz/30Hz	64:27	1:1	YC422	12	●	●	●	●	●	●	●
719(95)	95	3840x2160p	29.97Hz/30Hz	64:27	1:1	YC420	8	X	X	X	X	X	X	X
719(95)	95	3840x2160p	29.97Hz/30Hz	64:27	1:1	YC420	10	X	X	X	X	X	X	X
719(95)	95	3840x2160p	29.97Hz/30Hz	64:27	1:1	YC420	12	X	X	X	X	X	X	X
720(96)	96	3840x2160p	50Hz	64:27	1:1	RGB/YC444	8	●	X	●	●	●	●	●
720(96)	96	3840x2160p	50Hz	64:27	1:1	RGB/YC444	10	X	X	●	●	●	●	●
720(96)	96	3840x2160p	50Hz	64:27	1:1	RGB/YC444	12	X	X	●	●	●	●	●

## HDMI 2.1 信號模組 A223805 使用手冊

720(96)	96	3840x2160p	50Hz	64:27	1:1	YC422	8	●	X	●	●	●	●	●
720(96)	96	3840x2160p	50Hz	64:27	1:1	YC422	10	●	X	●	●	●	●	●
720(96)	96	3840x2160p	50Hz	64:27	1:1	YC422	12	●	X	●	●	●	●	●
720(96)	96	3840x2160p	50Hz	64:27	1:1	YC420	8	●	X	●	●	●	●	●
720(96)	96	3840x2160p	50Hz	64:27	1:1	YC420	10	●	X	●	●	●	●	●
720(96)	96	3840x2160p	50Hz	64:27	1:1	YC420	12	●	X	●	●	●	●	●
721(97)	97	3840x2160p	59.94Hz/60Hz	64:27	1:1	RGB/YC444	8	●	X	●	●	●	●	●
721(97)	97	3840x2160p	59.94Hz/60Hz	64:27	1:1	RGB/YC444	10	X	X	●	●	●	●	●
721(97)	97	3840x2160p	59.94Hz/60Hz	64:27	1:1	RGB/YC444	12	X	X	●	●	●	●	●
721(97)	97	3840x2160p	59.94Hz/60Hz	64:27	1:1	YC422	8	●	X	●	●	●	●	●
721(97)	97	3840x2160p	59.94Hz/60Hz	64:27	1:1	YC422	10	●	X	●	●	●	●	●
721(97)	97	3840x2160p	59.94Hz/60Hz	64:27	1:1	YC422	12	●	X	●	●	●	●	●
721(97)	97	3840x2160p	59.94Hz/60Hz	64:27	1:1	YC420	8	●	X	●	●	●	●	●
721(97)	97	3840x2160p	59.94Hz/60Hz	64:27	1:1	YC420	10	●	X	●	●	●	●	●
721(97)	97	3840x2160p	59.94Hz/60Hz	64:27	1:1	YC420	12	●	X	●	●	●	●	●
722(98)	98	4096x2160p	23.98Hz/24Hz	64:27	1:1	RGB/YC444	8	●	●	●	●	●	●	●
722(98)	98	4096x2160p	23.98Hz/24Hz	64:27	1:1	RGB/YC444	10	●	X	●	●	●	●	●
722(98)	98	4096x2160p	23.98Hz/24Hz	64:27	1:1	RGB/YC444	12	●	X	●	●	●	●	●
722(98)	98	4096x2160p	23.98Hz/24Hz	64:27	1:1	YC422	8	●	●	●	●	●	●	●
722(98)	98	4096x2160p	23.98Hz/24Hz	64:27	1:1	YC422	10	●	●	●	●	●	●	●
722(98)	98	4096x2160p	23.98Hz/24Hz	64:27	1:1	YC422	12	●	●	●	●	●	●	●
722(98)	98	4096x2160p	23.98Hz/24Hz	64:27	1:1	YC420	8	X	X	X	X	X	X	X
722(98)	98	4096x2160p	23.98Hz/24Hz	64:27	1:1	YC420	10	X	X	X	X	X	X	X
722(98)	98	4096x2160p	23.98Hz/24Hz	64:27	1:1	YC420	12	X	X	X	X	X	X	X
723(99)	99	4096x2160p	25Hz	64:27	1:1	RGB/YC444	8	●	X	X	X	X	X	X
723(99)	99	4096x2160p	25Hz	64:27	1:1	RGB/YC444	10	●	X	X	X	X	X	X
723(99)	99	4096x2160p	25Hz	64:27	1:1	RGB/YC444	12	●	X	X	X	X	X	X
723(99)	99	4096x2160p	25Hz	64:27	1:1	YC422	8	●	X	X	X	X	X	X
723(99)	99	4096x2160p	25Hz	64:27	1:1	YC422	10	●	X	X	X	X	X	X
723(99)	99	4096x2160p	25Hz	64:27	1:1	YC422	12	●	X	X	X	X	X	X
723(99)	99	4096x2160p	25Hz	64:27	1:1	YC420	8	X	X	X	X	X	X	X
723(99)	99	4096x2160p	25Hz	64:27	1:1	YC420	10	X	X	X	X	X	X	X
723(99)	99	4096x2160p	25Hz	64:27	1:1	YC420	12	X	X	X	X	X	X	X
724(100)	100	4096x2160p	29.97Hz/30Hz	64:27	1:1	RGB/YC444	8	●	X	X	X	X	X	X
724(100)	100	4096x2160p	29.97Hz/30Hz	64:27	1:1	RGB/YC444	10	●	X	X	X	X	X	X
724(100)	100	4096x2160p	29.97Hz/30Hz	64:27	1:1	RGB/YC444	12	●	X	X	X	X	X	X
724(100)	100	4096x2160p	29.97Hz/30Hz	64:27	1:1	YC422	8	●	X	X	X	X	X	X
724(100)	100	4096x2160p	29.97Hz/30Hz	64:27	1:1	YC422	10	●	X	X	X	X	X	X

附錄 A A223805 Default Timing List

724(100)	100	4096x2160p	29.97Hz/30Hz	64:27	1:1	YC422	12	●	X	X	X	X	X	X
724(100)	100	4096x2160p	29.97Hz/30Hz	64:27	1:1	YC420	8	X	X	X	X	X	X	X
724(100)	100	4096x2160p	29.97Hz/30Hz	64:27	1:1	YC420	10	X	X	X	X	X	X	X
724(100)	100	4096x2160p	29.97Hz/30Hz	64:27	1:1	YC420	12	X	X	X	X	X	X	X
725(101)	101	4096x2160p	50Hz	64:27	1:1	RGB/YC444	8	●	X	●	●	●	●	●
725(101)	101	4096x2160p	50Hz	64:27	1:1	RGB/YC444	10	X	X	X	●	●	●	●
725(101)	101	4096x2160p	50Hz	64:27	1:1	RGB/YC444	12	X	X	X	●	●	●	●
725(101)	101	4096x2160p	50Hz	64:27	1:1	YC422	8	●	●	●	X	X	X	X
725(101)	101	4096x2160p	50Hz	64:27	1:1	YC422	10	●	●	●	X	X	X	X
725(101)	101	4096x2160p	50Hz	64:27	1:1	YC422	12	●	●	●	●	●	●	●
725(101)	101	4096x2160p	50Hz	64:27	1:1	YC420	8	●	●	●	●	●	●	●
725(101)	101	4096x2160p	50Hz	64:27	1:1	YC420	10	●	X	●	●	●	●	●
725(101)	101	4096x2160p	50Hz	64:27	1:1	YC420	12	●	X	●	●	●	●	●
726(102)	102	4096x2160p	59.94Hz/60Hz	64:27	1:1	RGB/YC444	8	●	X	●	●	●	●	●
726(102)	102	4096x2160p	59.94Hz/60Hz	64:27	1:1	RGB/YC444	10	X	X	●	●	●	●	●
726(102)	102	4096x2160p	59.94Hz/60Hz	64:27	1:1	RGB/YC444	12	X	X	●	●	●	●	●
726(102)	102	4096x2160p	59.94Hz/60Hz	64:27	1:1	YC422	8	●	X	●	●	●	●	●
726(102)	102	4096x2160p	59.94Hz/60Hz	64:27	1:1	YC422	10	●	X	●	●	●	●	●
726(102)	102	4096x2160p	59.94Hz/60Hz	64:27	1:1	YC422	12	●	X	●	●	●	●	●
726(102)	102	4096x2160p	59.94Hz/60Hz	64:27	1:1	YC420	8	●	●	●	●	●	●	●
726(102)	102	4096x2160p	59.94Hz/60Hz	64:27	1:1	YC420	10	●	X	●	●	●	●	●
726(102)	102	4096x2160p	59.94Hz/60Hz	64:27	1:1	YC420	12	●	X	●	●	●	●	●
727(103)	103	3840x2160p	23.98Hz/24Hz	64:27	4:3	RGB/YC444	8	●	X	X	X	X	X	X
727(103)	103	3840x2160p	23.98Hz/24Hz	64:27	4:3	RGB/YC444	10	●	X	X	X	X	X	X
727(103)	103	3840x2160p	23.98Hz/24Hz	64:27	4:3	RGB/YC444	12	●	X	X	X	X	X	X
727(103)	103	3840x2160p	23.98Hz/24Hz	64:27	4:3	YC422	8	●	X	X	X	X	X	X
727(103)	103	3840x2160p	23.98Hz/24Hz	64:27	4:3	YC422	10	●	X	X	X	X	X	X
727(103)	103	3840x2160p	23.98Hz/24Hz	64:27	4:3	YC422	12	●	X	X	X	X	X	X
727(103)	103	3840x2160p	23.98Hz/24Hz	64:27	4:3	YC420	8	X	X	X	X	X	X	X
727(103)	103	3840x2160p	23.98Hz/24Hz	64:27	4:3	YC420	10	X	X	X	X	X	X	X
727(103)	103	3840x2160p	23.98Hz/24Hz	64:27	4:3	YC420	12	X	X	X	X	X	X	X
728(104)	104	3840x2160p	25Hz	64:27	4:3	RGB/YC444	8	●	X	X	X	X	X	X
728(104)	104	3840x2160p	25Hz	64:27	4:3	RGB/YC444	10	●	X	X	X	X	X	X
728(104)	104	3840x2160p	25Hz	64:27	4:3	RGB/YC444	12	●	X	X	X	X	X	X
728(104)	104	3840x2160p	25Hz	64:27	4:3	YC422	8	●	X	X	X	X	X	X
728(104)	104	3840x2160p	25Hz	64:27	4:3	YC422	10	●	X	X	X	X	X	X
728(104)	104	3840x2160p	25Hz	64:27	4:3	YC422	12	●	X	X	X	X	X	X
728(104)	104	3840x2160p	25Hz	64:27	4:3	YC420	8	X	X	X	X	X	X	X

# HDMI 2.1 信號模組 A223805 使用手冊

728(104)	104	3840x2160p	25Hz	64:27	4:3	YC420	10	X	X	X	X	X	X	X
728(104)	104	3840x2160p	25Hz	64:27	4:3	YC420	12	X	X	X	X	X	X	X
729(105)	105	3840x2160p	29.97Hz/30Hz	64:27	4:3	RGB/YC444	8	●	X	X	X	X	X	X
729(105)	105	3840x2160p	29.97Hz/30Hz	64:27	4:3	RGB/YC444	10	●	X	X	X	X	X	X
729(105)	105	3840x2160p	29.97Hz/30Hz	64:27	4:3	RGB/YC444	12	●	X	X	X	X	X	X
729(105)	105	3840x2160p	29.97Hz/30Hz	64:27	4:3	YC422	8	●	X	X	X	X	X	X
729(105)	105	3840x2160p	29.97Hz/30Hz	64:27	4:3	YC422	10	●	X	X	X	X	X	X
729(105)	105	3840x2160p	29.97Hz/30Hz	64:27	4:3	YC422	12	●	X	X	X	X	X	X
729(105)	105	3840x2160p	29.97Hz/30Hz	64:27	4:3	YC420	8	X	X	X	X	X	X	X
729(105)	105	3840x2160p	29.97Hz/30Hz	64:27	4:3	YC420	10	X	X	X	X	X	X	X
729(105)	105	3840x2160p	29.97Hz/30Hz	64:27	4:3	YC420	12	X	X	X	X	X	X	X
730(106)	106	3840x2160p	50Hz	64:27	4:3	RGB/YC444	8	●	X	●	●	●	●	●
730(106)	106	3840x2160p	50Hz	64:27	4:3	RGB/YC444	10	X	X	●	●	●	●	●
730(106)	106	3840x2160p	50Hz	64:27	4:3	RGB/YC444	12	X	X	●	●	●	●	●
730(106)	106	3840x2160p	50Hz	64:27	4:3	YC422	8	●	X	●	●	●	●	●
730(106)	106	3840x2160p	50Hz	64:27	4:3	YC422	10	●	X	●	●	●	●	●
730(106)	106	3840x2160p	50Hz	64:27	4:3	YC422	12	●	X	●	●	●	●	●
730(106)	106	3840x2160p	50Hz	64:27	4:3	YC420	8	●	X	●	●	●	●	●
730(106)	106	3840x2160p	50Hz	64:27	4:3	YC420	10	●	X	●	●	●	●	●
730(106)	106	3840x2160p	50Hz	64:27	4:3	YC420	12	●	X	●	●	●	●	●
731(107)	107	3840x2160p	59.94Hz/60Hz	64:27	4:3	RGB/YC444	8	●	X	●	●	●	●	●
731(107)	107	3840x2160p	59.94Hz/60Hz	64:27	4:3	RGB/YC444	10	X	X	●	●	●	●	●
731(107)	107	3840x2160p	59.94Hz/60Hz	64:27	4:3	RGB/YC444	12	X	X	●	●	●	●	●
731(107)	107	3840x2160p	59.94Hz/60Hz	64:27	4:3	YC422	8	●	X	●	●	●	●	●
731(107)	107	3840x2160p	59.94Hz/60Hz	64:27	4:3	YC422	10	●	X	●	●	●	●	●
731(107)	107	3840x2160p	59.94Hz/60Hz	64:27	4:3	YC422	12	●	X	●	●	●	●	●
731(107)	107	3840x2160p	59.94Hz/60Hz	64:27	4:3	YC420	8	●	X	●	●	●	●	●
731(107)	107	3840x2160p	59.94Hz/60Hz	64:27	4:3	YC420	10	●	X	●	●	●	●	●
731(107)	107	3840x2160p	59.94Hz/60Hz	64:27	4:3	YC420	12	●	X	●	●	●	●	●
733(108)	108	1280x720p	47.95Hz/48Hz	16:9	1:1	RGB/YC444	8	●	X	X	X	X	X	X
733(108)	108	1280x720p	47.95Hz/48Hz	16:9	1:1	RGB/YC444	10	●	X	X	X	X	X	X
733(108)	108	1280x720p	47.95Hz/48Hz	16:9	1:1	RGB/YC444	12	●	X	X	X	X	X	X
733(108)	108	1280x720p	47.95Hz/48Hz	16:9	1:1	YC422	8	●	X	X	X	X	X	X
733(108)	108	1280x720p	47.95Hz/48Hz	16:9	1:1	YC422	10	●	X	X	X	X	X	X
733(108)	108	1280x720p	47.95Hz/48Hz	16:9	1:1	YC422	12	●	X	X	X	X	X	X
733(108)	108	1280x720p	47.95Hz/48Hz	16:9	1:1	YC420	8	X	X	X	X	X	X	X
733(108)	108	1280x720p	47.95Hz/48Hz	16:9	1:1	YC420	10	X	X	X	X	X	X	X
733(108)	108	1280x720p	47.95Hz/48Hz	16:9	1:1	YC420	12	X	X	X	X	X	X	X

附錄 A A223805 Default Timing List

734(109)	109	1280x720p	47.95Hz/48Hz	64:27	4:3	RGB/YC444	8	●	X	X	X	X	X	X
734(109)	109	1280x720p	47.95Hz/48Hz	64:27	4:3	RGB/YC444	10	●	X	X	X	X	X	X
734(109)	109	1280x720p	47.95Hz/48Hz	64:27	4:3	RGB/YC444	12	●	X	X	X	X	X	X
734(109)	109	1280x720p	47.95Hz/48Hz	64:27	4:3	YC422	8	●	X	X	X	X	X	X
734(109)	109	1280x720p	47.95Hz/48Hz	64:27	4:3	YC422	10	●	X	X	X	X	X	X
734(109)	109	1280x720p	47.95Hz/48Hz	64:27	4:3	YC422	12	●	X	X	X	X	X	X
734(109)	109	1280x720p	47.95Hz/48Hz	64:27	4:3	YC420	8	X	X	X	X	X	X	X
734(109)	109	1280x720p	47.95Hz/48Hz	64:27	4:3	YC420	10	X	X	X	X	X	X	X
734(109)	109	1280x720p	47.95Hz/48Hz	64:27	4:3	YC420	12	X	X	X	X	X	X	X
735(110)	110	1680x720p	47.95Hz/48Hz	64:27	64:63	RGB/YC444	8	●	X	X	X	X	X	X
735(110)	110	1680x720p	47.95Hz/48Hz	64:27	64:63	RGB/YC444	10	●	X	X	X	X	X	X
735(110)	110	1680x720p	47.95Hz/48Hz	64:27	64:63	RGB/YC444	12	●	X	X	X	X	X	X
735(110)	110	1680x720p	47.95Hz/48Hz	64:27	64:63	YC422	8	●	X	X	X	X	X	X
735(110)	110	1680x720p	47.95Hz/48Hz	64:27	64:63	YC422	10	●	X	X	X	X	X	X
735(110)	110	1680x720p	47.95Hz/48Hz	64:27	64:63	YC422	12	●	X	X	X	X	X	X
735(110)	110	1680x720p	47.95Hz/48Hz	64:27	64:63	YC420	8	X	X	X	X	X	X	X
735(110)	110	1680x720p	47.95Hz/48Hz	64:27	64:63	YC420	10	X	X	X	X	X	X	X
735(110)	110	1680x720p	47.95Hz/48Hz	64:27	64:63	YC420	12	X	X	X	X	X	X	X
736(111)	111	1920x1080p	47.95Hz/48Hz	16:9	1:1	RGB/YC444	8	●	X	X	X	X	X	X
736(111)	111	1920x1080p	47.95Hz/48Hz	16:9	1:1	RGB/YC444	10	●	X	X	X	X	X	X
736(111)	111	1920x1080p	47.95Hz/48Hz	16:9	1:1	RGB/YC444	12	●	X	X	X	X	X	X
736(111)	111	1920x1080p	47.95Hz/48Hz	16:9	1:1	YC422	8	●	X	X	X	X	X	X
736(111)	111	1920x1080p	47.95Hz/48Hz	16:9	1:1	YC422	10	●	X	X	X	X	X	X
736(111)	111	1920x1080p	47.95Hz/48Hz	16:9	1:1	YC422	12	●	X	X	X	X	X	X
736(111)	111	1920x1080p	47.95Hz/48Hz	16:9	1:1	YC420	8	X	X	X	X	X	X	X
736(111)	111	1920x1080p	47.95Hz/48Hz	16:9	1:1	YC420	10	X	X	X	X	X	X	X
736(111)	111	1920x1080p	47.95Hz/48Hz	16:9	1:1	YC420	12	X	X	X	X	X	X	X
737(112)	112	1920x1080p	47.95Hz/48Hz	64:27	4:3	RGB/YC444	8	●	X	X	X	X	X	X
737(112)	112	1920x1080p	47.95Hz/48Hz	64:27	4:3	RGB/YC444	10	●	X	X	X	X	X	X
737(112)	112	1920x1080p	47.95Hz/48Hz	64:27	4:3	RGB/YC444	12	●	X	X	X	X	X	X
737(112)	112	1920x1080p	47.95Hz/48Hz	64:27	4:3	YC422	8	●	X	X	X	X	X	X
737(112)	112	1920x1080p	47.95Hz/48Hz	64:27	4:3	YC422	10	●	X	X	X	X	X	X
737(112)	112	1920x1080p	47.95Hz/48Hz	64:27	4:3	YC422	12	●	X	X	X	X	X	X
737(112)	112	1920x1080p	47.95Hz/48Hz	64:27	4:3	YC420	8	X	X	X	X	X	X	X
737(112)	112	1920x1080p	47.95Hz/48Hz	64:27	4:3	YC420	10	X	X	X	X	X	X	X
737(112)	112	1920x1080p	47.95Hz/48Hz	64:27	4:3	YC420	12	X	X	X	X	X	X	X
738(113)	113	2560x1080p	47.95Hz/48Hz	64:27	1:1	RGB/YC444	8	●	X	X	X	X	X	X
738(113)	113	2560x1080p	47.95Hz/48Hz	64:27	1:1	RGB/YC444	10	●	X	X	X	X	X	X

# HDMI 2.1 信號模組 A223805 使用手冊

738(113)	113	2560x1080p	47.95Hz/48Hz	64:27	1:1	RGB/YC444	12	●	X	X	X	X	X	X
738(113)	113	2560x1080p	47.95Hz/48Hz	64:27	1:1	YC422	8	●	X	X	X	X	X	X
738(113)	113	2560x1080p	47.95Hz/48Hz	64:27	1:1	YC422	10	●	X	X	X	X	X	X
738(113)	113	2560x1080p	47.95Hz/48Hz	64:27	1:1	YC422	12	●	X	X	X	X	X	X
738(113)	113	2560x1080p	47.95Hz/48Hz	64:27	1:1	YC420	8	X	X	X	X	X	X	X
738(113)	113	2560x1080p	47.95Hz/48Hz	64:27	1:1	YC420	10	X	X	X	X	X	X	X
738(113)	113	2560x1080p	47.95Hz/48Hz	64:27	1:1	YC420	12	X	X	X	X	X	X	X
739(114)	114	3840x2160p	47.95Hz/48Hz	16:9	1:1	RGB/YC444	8	●	X	X	X	X	X	X
739(114)	114	3840x2160p	47.95Hz/48Hz	16:9	1:1	RGB/YC444	10	●	X	X	X	X	X	X
739(114)	114	3840x2160p	47.95Hz/48Hz	16:9	1:1	RGB/YC444	12	●	X	X	X	X	X	X
739(114)	114	3840x2160p	47.95Hz/48Hz	16:9	1:1	YC422	8	●	X	X	X	X	X	X
739(114)	114	3840x2160p	47.95Hz/48Hz	16:9	1:1	YC422	10	●	X	X	X	X	X	X
739(114)	114	3840x2160p	47.95Hz/48Hz	16:9	1:1	YC422	12	●	X	X	X	X	X	X
739(114)	114	3840x2160p	47.95Hz/48Hz	16:9	1:1	YC420	8	X	X	X	X	X	X	X
739(114)	114	3840x2160p	47.95Hz/48Hz	16:9	1:1	YC420	10	X	X	X	X	X	X	X
739(114)	114	3840x2160p	47.95Hz/48Hz	16:9	1:1	YC420	12	X	X	X	X	X	X	X
741(116)	116	3840x2160p	47.95Hz/48Hz	64:27	4:3	RGB/YC444	8	●	X	X	X	X	X	X
741(116)	116	3840x2160p	47.95Hz/48Hz	64:27	4:3	RGB/YC444	10	●	X	X	X	X	X	X
741(116)	116	3840x2160p	47.95Hz/48Hz	64:27	4:3	RGB/YC444	12	●	X	X	X	X	X	X
741(116)	116	3840x2160p	47.95Hz/48Hz	64:27	4:3	YC422	8	●	X	X	X	X	X	X
741(116)	116	3840x2160p	47.95Hz/48Hz	64:27	4:3	YC422	10	●	X	X	X	X	X	X
741(116)	116	3840x2160p	47.95Hz/48Hz	64:27	4:3	YC422	12	●	X	X	X	X	X	X
741(116)	116	3840x2160p	47.95Hz/48Hz	64:27	4:3	YC420	8	X	X	X	X	X	X	X
741(116)	116	3840x2160p	47.95Hz/48Hz	64:27	4:3	YC420	10	X	X	X	X	X	X	X
741(116)	116	3840x2160p	47.95Hz/48Hz	64:27	4:3	YC420	12	X	X	X	X	X	X	X
742(117)	117	3840x2160p	100Hz	16:9	1:1	RGB/YC444	8	X	X	●	●	●	●	●
742(117)	117	3840x2160p	100Hz	16:9	1:1	RGB/YC444	10	X	X	●	●	●	●	●
742(117)	117	3840x2160p	100Hz	16:9	1:1	RGB/YC444	12	X	X	●	●	●	●	●
742(117)	117	3840x2160p	100Hz	16:9	1:1	YC422	8	X	X	X	X	●	●	●
742(117)	117	3840x2160p	100Hz	16:9	1:1	YC422	10	X	X	X	X	●	●	●
742(117)	117	3840x2160p	100Hz	16:9	1:1	YC422	12	X	X	X	X	●	●	●
742(117)	117	3840x2160p	100Hz	16:9	1:1	YC420	8	X	X	●	●	●	●	●
742(117)	117	3840x2160p	100Hz	16:9	1:1	YC420	10	X	X	X	●	●	●	●
742(117)	117	3840x2160p	100Hz	16:9	1:1	YC420	12	X	X	X	●	●	●	●
743(118)	118	3840x2160p	119.88/120Hz	16:9	1:1	RGB/YC444	8	X	X	●	●	●	●	●
743(118)	118	3840x2160p	119.88/120Hz	16:9	1:1	RGB/YC444	10	X	X	●	●	●	X	●
743(118)	118	3840x2160p	119.88/120Hz	16:9	1:1	RGB/YC444	12	X	X	●	●	●	●	●
743(118)	118	3840x2160p	119.88/120Hz	16:9	1:1	YC422	8	X	X	X	X	●	●	●



附錄 A A223805 Default Timing List

743(118)	118	3840x2160p	119.88/120Hz	16:9	1:1	YC422	10	X	X	X	X	●	●	●
743(118)	118	3840x2160p	119.88/120Hz	16:9	1:1	YC422	12	X	X	X	X	●	●	●
743(118)	118	3840x2160p	119.88/120Hz	16:9	1:1	YC420	8	X	X	●	●	●	●	●
743(118)	118	3840x2160p	119.88/120Hz	16:9	1:1	YC420	10	X	X	X	●	●	●	●
743(118)	118	3840x2160p	119.88/120Hz	16:9	1:1	YC420	12	X	X	X	X	●	●	●
744(119)	119	3840x2160p	100Hz	64:27	4:3	RGB/YC444	8	X	X	●	●	●	●	●
744(119)	119	3840x2160p	100Hz	64:27	4:3	RGB/YC444	10	X	X	●	●	●	●	●
744(119)	119	3840x2160p	100Hz	64:27	4:3	RGB/YC444	12	X	X	●	●	●	●	●
744(119)	119	3840x2160p	100Hz	64:27	4:3	YC422	8	X	X	X	X	●	●	●
744(119)	119	3840x2160p	100Hz	64:27	4:3	YC422	10	X	X	X	X	●	●	●
744(119)	119	3840x2160p	100Hz	64:27	4:3	YC422	12	X	X	X	X	●	●	●
744(119)	119	3840x2160p	100Hz	64:27	4:3	YC420	8	X	X	●	●	●	●	●
744(119)	119	3840x2160p	100Hz	64:27	4:3	YC420	10	X	X	X	●	●	●	●
744(119)	119	3840x2160p	100Hz	64:27	4:3	YC420	12	X	X	X	●	●	●	●
745(120)	120	3840x2160p	119.88/120Hz	64:27	4:3	RGB/YC444	8	X	X	●	●	●	●	●
745(120)	120	3840x2160p	119.88/120Hz	64:27	4:3	RGB/YC444	10	X	X	●	●	●	X	●
745(120)	120	3840x2160p	119.88/120Hz	64:27	4:3	RGB/YC444	12	X	X	●	●	●	●	●
745(120)	120	3840x2160p	119.88/120Hz	64:27	4:3	YC422	8	X	X	X	X	●	●	●
745(120)	120	3840x2160p	119.88/120Hz	64:27	4:3	YC422	10	X	X	X	X	●	●	●
745(120)	120	3840x2160p	119.88/120Hz	64:27	4:3	YC422	12	X	X	X	X	●	●	●
745(120)	120	3840x2160p	119.88/120Hz	64:27	4:3	YC420	8	X	X	●	●	●	●	●
745(120)	120	3840x2160p	119.88/120Hz	64:27	4:3	YC420	10	X	X	X	●	●	●	●
745(120)	120	3840x2160p	119.88/120Hz	64:27	4:3	YC420	12	X	X	X	X	●	●	●
754(194)	194	7680x4320p	23.98Hz/24Hz	16:9	1:1	RGB/YC444	8	X	X	●	●	●	●	●
754(194)	194	7680x4320p	23.98Hz/24Hz	16:9	1:1	RGB/YC444	10	X	X	●	●	●	●	●
754(194)	194	7680x4320p	23.98Hz/24Hz	16:9	1:1	RGB/YC444	12	X	X	●	●	●	●	X
754(194)	194	7680x4320p	23.98Hz/24Hz	16:9	1:1	YC422	8	X	X	X	●	●	●	●
754(194)	194	7680x4320p	23.98Hz/24Hz	16:9	1:1	YC422	10	X	X	X	●	●	●	●
754(194)	194	7680x4320p	23.98Hz/24Hz	16:9	1:1	YC422	12	X	X	X	●	●	●	●
754(194)	194	7680x4320p	23.98Hz/24Hz	16:9	1:1	YC420	8	X	X	●	●	●	●	●
754(194)	194	7680x4320p	23.98Hz/24Hz	16:9	1:1	YC420	10	X	X	X	●	●	●	●
754(194)	194	7680x4320p	23.98Hz/24Hz	16:9	1:1	YC420	12	X	X	X	●	●	●	●
755(195)	195	7680x4320p	25Hz	16:9	1:1	RGB/YC444	8	X	X	●	●	●	●	●
755(195)	195	7680x4320p	25Hz	16:9	1:1	RGB/YC444	10	X	X	●	●	●	●	●
755(195)	195	7680x4320p	25Hz	16:9	1:1	RGB/YC444	12	X	X	●	●	●	●	●
755(195)	195	7680x4320p	25Hz	16:9	1:1	YC422	8	X	X	X	●	●	●	●
755(195)	195	7680x4320p	25Hz	16:9	1:1	YC422	10	X	X	X	●	●	●	●
755(195)	195	7680x4320p	25Hz	16:9	1:1	YC422	12	X	X	X	●	●	●	●

# HDMI 2.1 信號模組 A223805 使用手冊

755(195)	195	7680x4320p	25Hz	16:9	1:1	YC420	8	X	X	●	●	●	●	●
755(195)	195	7680x4320p	25Hz	16:9	1:1	YC420	10	X	X	X	●	●	●	●
755(195)	195	7680x4320p	25Hz	16:9	1:1	YC420	12	X	X	X	●	●	●	●
756(196)	196	7680x4320p	29.97Hz/30Hz	16:9	1:1	RGB/YC444	8	X	X	●	●	●	●	●
756(196)	196	7680x4320p	29.97Hz/30Hz	16:9	1:1	RGB/YC444	10	X	X	●	●	●	●	●
756(196)	196	7680x4320p	29.97Hz/30Hz	16:9	1:1	RGB/YC444	12	X	X	●	●	●	●	●
756(196)	196	7680x4320p	29.97Hz/30Hz	16:9	1:1	YC422	8	X	●	●	●	●	●	●
756(196)	196	7680x4320p	29.97Hz/30Hz	16:9	1:1	YC422	10	X	●	●	●	●	●	●
756(196)	196	7680x4320p	29.97Hz/30Hz	16:9	1:1	YC422	12	X	X	●	●	●	●	●
756(196)	196	7680x4320p	29.97Hz/30Hz	16:9	1:1	YC420	8	X	X	●	●	●	●	●
756(196)	196	7680x4320p	29.97Hz/30Hz	16:9	1:1	YC420	10	X	X	●	●	●	●	●
756(196)	196	7680x4320p	29.97Hz/30Hz	16:9	1:1	YC420	12	X	X	●	●	●	●	●
758(198)	198	7680x4320p	50Hz	16:9	1:1	RGB/YC444	8	X	X	X	●	●	●	●
758(198)	198	7680x4320p	50Hz	16:9	1:1	RGB/YC444	10	X	X	X	●	●	●	●
758(198)	198	7680x4320p	50Hz	16:9	1:1	RGB/YC444	12	X	X	X	●	●	●	●
758(198)	198	7680x4320p	50Hz	16:9	1:1	YC422	8	X	X	X	●	●	●	●
758(198)	198	7680x4320p	50Hz	16:9	1:1	YC422	10	X	X	X	●	●	●	●
758(198)	198	7680x4320p	50Hz	16:9	1:1	YC422	12	X	X	X	●	●	●	●
758(198)	198	7680x4320p	50Hz	16:9	1:1	YC420	8	X	X	X	●	●	●	●
758(198)	198	7680x4320p	50Hz	16:9	1:1	YC420	10	X	X	X	●	●	●	●
758(198)	198	7680x4320p	50Hz	16:9	1:1	YC420	12	X	X	X	●	●	●	●
759(199)	199	7680x4320p	59.94Hz/60Hz	16:9	1:1	RGB/YC444	8	X	X	X	●	●	●	●
759(199)	199	7680x4320p	59.94Hz/60Hz	16:9	1:1	RGB/YC444	10	X	X	X	●	●	●	●
759(199)	199	7680x4320p	59.94Hz/60Hz	16:9	1:1	RGB/YC444	12	X	X	X	●	●	●	●
759(199)	199	7680x4320p	59.94Hz/60Hz	16:9	1:1	YC422	8	X	X	X	●	●	●	●
759(199)	199	7680x4320p	59.94Hz/60Hz	16:9	1:1	YC422	10	X	X	X	●	●	●	●
759(199)	199	7680x4320p	59.94Hz/60Hz	16:9	1:1	YC422	12	X	X	X	●	●	●	●
759(199)	199	7680x4320p	59.94Hz/60Hz	16:9	1:1	YC420	8	X	X	X	●	●	●	●
759(199)	199	7680x4320p	59.94Hz/60Hz	16:9	1:1	YC420	10	X	X	X	●	●	●	●
759(199)	199	7680x4320p	59.94Hz/60Hz	16:9	1:1	YC420	12	X	X	X	●	●	●	●
762(202)	202	7680x4320p	23.98Hz/24Hz	64:27	4:3	RGB/YC444	8	X	X	●	●	●	●	●
762(202)	202	7680x4320p	23.98Hz/24Hz	64:27	4:3	RGB/YC444	10	X	X	●	●	●	●	●
762(202)	202	7680x4320p	23.98Hz/24Hz	64:27	4:3	RGB/YC444	12	X	X	●	●	●	●	X
762(202)	202	7680x4320p	23.98Hz/24Hz	64:27	4:3	YC422	8	X	X	X	●	●	●	●
762(202)	202	7680x4320p	23.98Hz/24Hz	64:27	4:3	YC422	10	X	X	X	●	●	●	●
762(202)	202	7680x4320p	23.98Hz/24Hz	64:27	4:3	YC422	12	X	X	X	●	●	●	●
762(202)	202	7680x4320p	23.98Hz/24Hz	64:27	4:3	YC420	8	X	X	●	●	●	●	●
762(202)	202	7680x4320p	23.98Hz/24Hz	64:27	4:3	YC420	10	X	X	X	●	●	●	●

附錄 A A223805 Default Timing List

762(202)	202	7680x4320p	23.98Hz/24Hz	64:27	4:3	YC420	12	X	X	X	●	●	●	●
763(203)	203	7680x4320p	25Hz	64:27	4:3	RGB/YC444	8	X	X	●	●	●	●	●
763(203)	203	7680x4320p	25Hz	64:27	4:3	RGB/YC444	10	X	X	●	●	●	●	●
763(203)	203	7680x4320p	25Hz	64:27	4:3	RGB/YC444	12	X	X	●	●	●	●	●
763(203)	203	7680x4320p	25Hz	64:27	4:3	YC422	8	X	X	X	●	●	●	●
763(203)	203	7680x4320p	25Hz	64:27	4:3	YC422	10	X	X	X	●	●	●	●
763(203)	203	7680x4320p	25Hz	64:27	4:3	YC422	12	X	X	X	●	●	●	●
763(203)	203	7680x4320p	25Hz	64:27	4:3	YC420	8	X	X	●	●	●	●	●
763(203)	203	7680x4320p	25Hz	64:27	4:3	YC420	10	X	X	●	●	●	●	●
763(203)	203	7680x4320p	25Hz	64:27	4:3	YC420	12	X	X	X	●	●	●	●
764(204)	204	7680x4320p	29.97Hz/30Hz	64:27	4:3	RGB/YC444	8	X	X	●	●	●	●	●
764(204)	204	7680x4320p	29.97Hz/30Hz	64:27	4:3	RGB/YC444	10	X	X	●	●	●	●	●
764(204)	204	7680x4320p	29.97Hz/30Hz	64:27	4:3	RGB/YC444	12	X	X	●	●	●	●	●
764(204)	204	7680x4320p	29.97Hz/30Hz	64:27	4:3	YC422	8	X	●	●	●	●	●	●
764(204)	204	7680x4320p	29.97Hz/30Hz	64:27	4:3	YC422	10	X	●	●	●	●	●	●
764(204)	204	7680x4320p	29.97Hz/30Hz	64:27	4:3	YC422	12	X	X	●	●	●	●	●
764(204)	204	7680x4320p	29.97Hz/30Hz	64:27	4:3	YC420	8	X	X	●	●	●	●	●
764(204)	204	7680x4320p	29.97Hz/30Hz	64:27	4:3	YC420	10	X	X	●	●	●	●	●
764(204)	204	7680x4320p	29.97Hz/30Hz	64:27	4:3	YC420	12	X	X	●	●	●	●	●
766(206)	206	7680x4320p	50Hz	64:27	4:3	RGB/YC444	8	X	X	X	●	●	●	●
766(206)	206	7680x4320p	50Hz	64:27	4:3	RGB/YC444	10	X	X	X	●	●	●	●
766(206)	206	7680x4320p	50Hz	64:27	4:3	RGB/YC444	12	X	X	X	●	●	●	●
766(206)	206	7680x4320p	50Hz	64:27	4:3	YC422	8	X	X	X	●	●	●	●
766(206)	206	7680x4320p	50Hz	64:27	4:3	YC422	10	X	X	X	●	●	●	●
766(206)	206	7680x4320p	50Hz	64:27	4:3	YC422	12	X	X	X	●	●	●	●
766(206)	206	7680x4320p	50Hz	64:27	4:3	YC420	8	X	X	X	●	●	●	●
766(206)	206	7680x4320p	50Hz	64:27	4:3	YC420	10	X	X	X	●	●	●	●
766(206)	206	7680x4320p	50Hz	64:27	4:3	YC420	12	X	X	X	●	●	●	●
767(207)	207	7680x4320p	59.94Hz/60Hz	64:27	4:3	RGB/YC444	8	X	X	X	●	●	●	●
767(207)	207	7680x4320p	59.94Hz/60Hz	64:27	4:3	RGB/YC444	10	X	X	X	●	●	●	●
767(207)	207	7680x4320p	59.94Hz/60Hz	64:27	4:3	RGB/YC444	12	X	X	X	●	●	●	●
767(207)	207	7680x4320p	59.94Hz/60Hz	64:27	4:3	YC422	8	X	X	X	●	●	●	●
767(207)	207	7680x4320p	59.94Hz/60Hz	64:27	4:3	YC422	10	X	X	X	●	●	●	●
767(207)	207	7680x4320p	59.94Hz/60Hz	64:27	4:3	YC422	12	X	X	X	●	●	●	●
767(207)	207	7680x4320p	59.94Hz/60Hz	64:27	4:3	YC420	8	X	X	X	●	●	●	●
767(207)	207	7680x4320p	59.94Hz/60Hz	64:27	4:3	YC420	10	X	X	X	●	●	●	●
767(207)	207	7680x4320p	59.94Hz/60Hz	64:27	4:3	YC420	12	X	X	X	●	●	●	●



## 附錄 B A223805 Default Pattern List

以下僅列出 A223805 HDMI 2.1 信號模組支援之 PATTERN 列表，若需要確認完整的 PATTERN TABLE，請參考 2238 主機使用手冊。

No.	Classification
1 ~ 100	Chroma Default Pattern
101 ~ 200	BASIC Pattern
201 ~ 250	TV Pattern
251 ~ 300	Colorful Pattern
301 ~ 350	Linearity Pattern
351 ~ 400	Resolution Pattern
401 ~ 500	Optical Pattern
501 ~ 550	High Definition Pattern
551 ~ 600	Dynamic Pattern
601 ~ 650	Audio Pattern
651 ~ 700	LCM Pattern
701 ~ 800	Information Pattern
801 ~ 900	BMP Pattern
901 ~ 949	3D Pattern
950 ~ 1000	License Pattern
1001~1019	Energy Star Pattern
1020 ~ 1200	HDR Pattern
1201 ~ 1300	Special Pattern
1301 ~ 1350	China Standard Pattern
1401 ~ 1500	8K Video
1501 ~ 2000	Empty
2001 ~ 5000	User Storage



CHROMA ATE INC.

致茂電子股份有限公司

88 Wenmao Rd., Guishan Dist.,

Taoyuan City 333001, Taiwan

桃園市 333001 龜山區文茂路 88 號

T +886-3-327-9999

F +886-3-327-8898

info@chromaate.com

[www.chromaate.com](http://www.chromaate.com)