

CHROMA PCBA Test System PCBA 系統測試



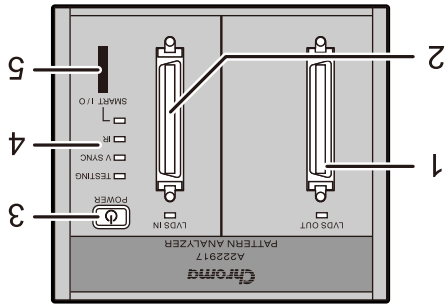
WARNING

警告 警告 警告

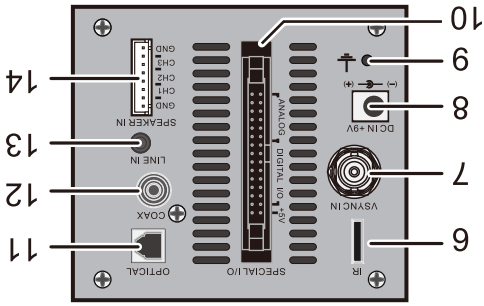


PCBA 系統測試 PCBA 系統測試

A222917 FRONT 前面板 前面板

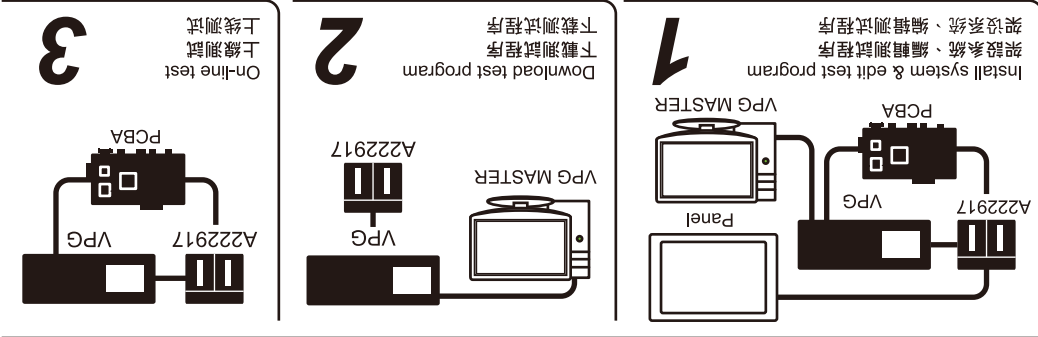


A222917 REAR 背板 背板



- | | | | | | |
|---|---------------|---|---------------------|---|-----------------|
| ① | LVDS output | ⑥ | IR transceiver | ⑪ | Optical input |
| ② | LVDS input | ⑦ | Vertical sync input | ⑫ | Coaxial input |
| ③ | Power switch | ⑧ | DC power input | ⑬ | Headphone input |
| ④ | Guiding light | ⑨ | Grounding screw | ⑭ | Speaker input |
| ⑤ | SMART I/O | ⑩ | Special I/O | | |
- (Connect to VPG)
- Digital audio
- Digital input/output x16
- I/O (Analog input x8,

System Operating Procedure Icon 系統操作程序圖示



※ See VPG MASTER Operation Manual for detail usage.
*詳細操作請參考VPG MASTER手冊

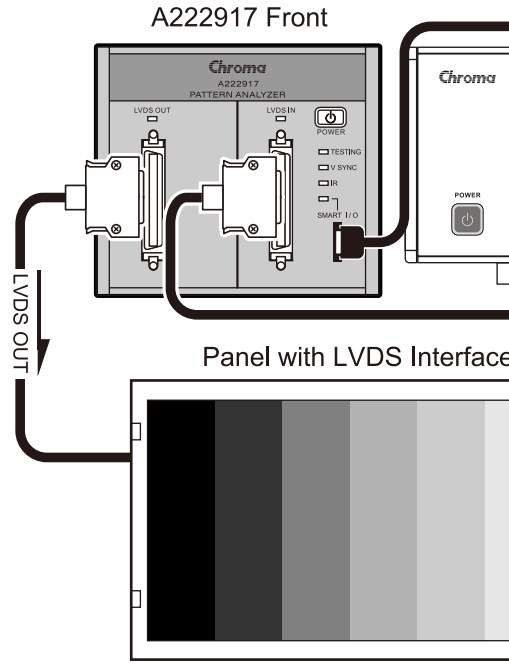
A222917 Pattern Analyzer

Host Connection Overview 主機連結埠安裝導覽 主机链接端口安装导览

Front Panel Connection Diagram

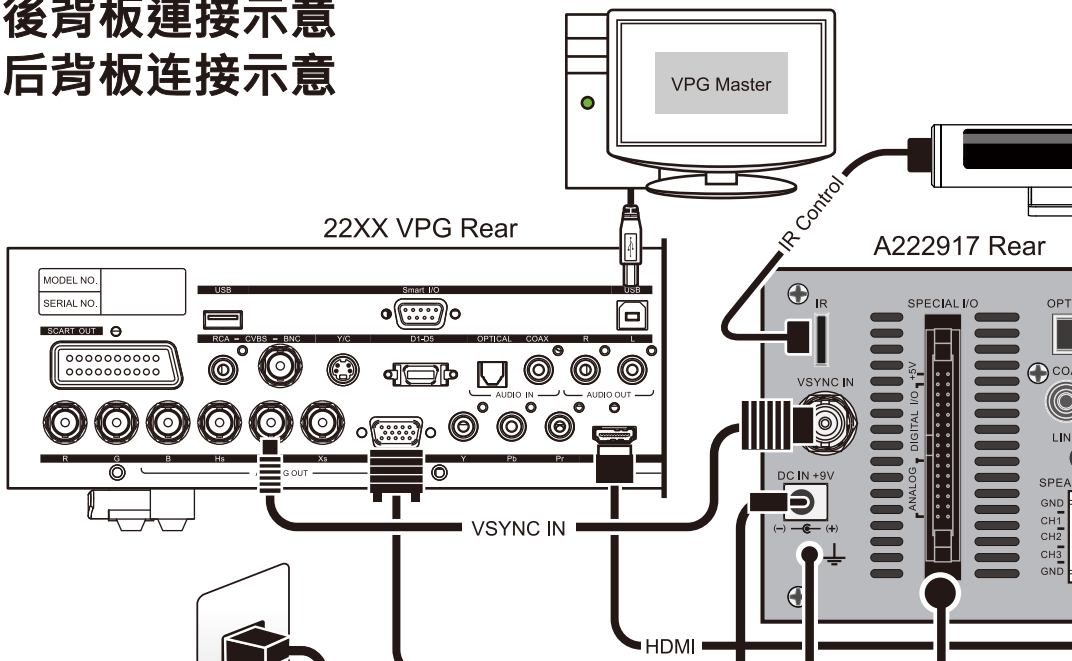
前面板連接示意 前面板连接示意

-  Check the location for steadiness.
 檢查地點穩定性
 检查地点稳定性
-  Check the outward appearance.
 檢查外觀
 检查外观
-  Check the peripherals and cables.
 檢查週邊與線材
 检查外围与线材



Rear Panel Connection Diagram

後背板連接示意 后背板连接示意



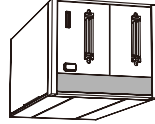
UNPACKING & EXAMINING

拆封與檢查 拆封與檢查

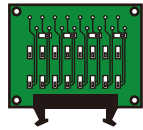


Please check if the following items are enclosed without missing. 請檢查包裝內附件是否齊全 請檢查包裝內附件是否齊全

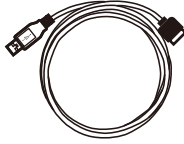
Standard Accessories & Cables 標準配件與線材



Pattern Analyzer
視頻圖像信號分析模組
視頻圖像信號分析模塊



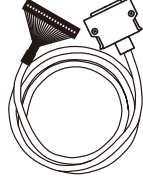
Special I/O
Connection Board
Special I/O 訊號轉板
Special I/O 訊號轉板



Smart I/O Cable
Smart I/O 控制線
Smart I/O 控制線



Power Supply
電源供應器
電源供應器



LVDS Cable 2 pcs
LVDS 訊號線 2條
LVDS 訊號線 2條



Special I/O Cable
Special I/O 控制線
Special I/O 控制線

Optional Accessories & Cables 選購配件與線材



IR Transceiver
紅外線收發器
紅外線收發器



IR Control Cable
IR 控制線
IR 控制線

The Device has been tested completely and well packed before shipment. Upon receiving, be sure to unpack it and inspect it immediately for any damage that may have occurred in transit. Save all packing materials in case that the test system has to be returned. If any damages are found, inform the deliveryman or sales distributor right away.

本測試機在出廠前已經過完整之測試與包裝，當收到本測試機時，請立刻打開包裝並檢查是否有因運輸不當而造成的傷害痕跡。並請保留所有的包裝材，以便如有需要將測試器送回時使用。如果發現有損害情況，請馬上通知送貨員或銷售者。

本測試機在出廠前已經過完整之測試與包裝，當收到本測試機時，請立刻打開包裝並檢查是否有因運輸不當而造成的傷害痕跡。並請保留所有的包裝材，以便如有需要將測試器送回時使用。如果發現有損害情況，請馬上通知送貨員或銷售者。

Operation Overview

導覽 裝導覽



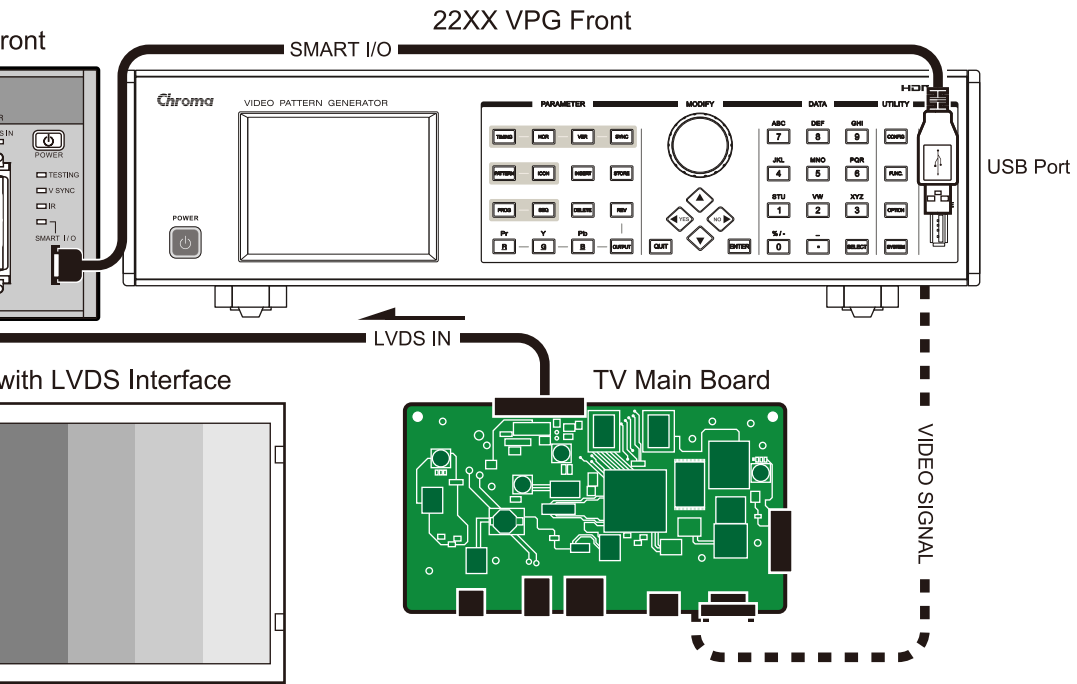
Connecting Port
插上連結埠
插上连接端口



Power On Check
開機檢查
开机检查



Test Signal Connection
測試訊號連接
测试讯号连接



IR Transceiver up to 130° angle acceptable
紅外線收發器 · 可接受角度共130°
红外线收发器 · 可接受角度共130°

