



DIE TEST HANDLER MODEL 3112

Chroma 3112 is a productive pick and place handler for high volume single or multi-site bare die testing. It is capable to handle various of bare die. The handler 3112 uses P&P technology to pick up bare die from chip tray, move them to the test stage and bin them upon sorting result. High throughput with low jam rate is the consequence result from the reliable handling mechanism and functionality outfit. The remain die check function reduce unexpected damages occurred.

The automation of testing and sorting techniques that applied to the bare die testing, not only in the production efficiently, reducing human resources and ensuring the test quality, but also reducing the testing defect rate.

KEY FEATURES

- Reliable Pick&Place bare die test handler
- Multi-plate input and automated test sorting capability
- Omni-directional adjustable probe stage (X/Y/Z/θ)
- Stage remain die check function
- x12 output tray and programmable output binning
- Real time yield control monitor (Per Dut)
- Real time probing status monitoring

3112

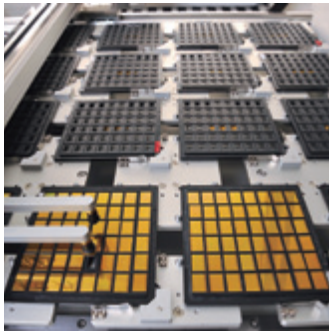


Chroma

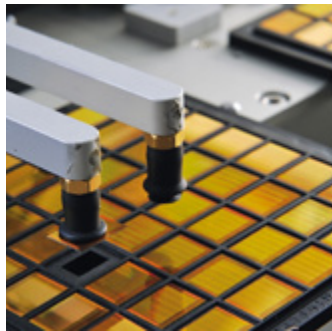
SPECIFICATIONS

Model	3112
Handler Dimension	1020 mm (W) x 870mm (D) x 1300 mm (H)
Weight	Net Weight < 250kg
Power Requirement	Power Supply : Single-phase, AC 220V, 60 Hz / 1.2KVA Compressed Air : Dry Air of 5.0 kg/cm ² (0.5 Mpa) or higher, constant supply ; 30l/min (ANR)
Application Die Size	5 x 5 mm to 20 x 20 mm
Test Site Number	Single site ; Dual site
Input Loader	4 manual tray
Number of sorting catagories	12 Hardware Bins (128 Software Bins)
Probe Card Outside Dimension	4470 x 5620 mil (Max. 113.5 x 142.7 mm) * Probe card provide by customer
Carrier Tray Outside Dimension	Standard size : 101.4 x 101.4 mm
Contact Force	Max. 10 kgf
UPH	600 @ T.T. = 7 sec. (Dual Site)
Probe Alignment (X / Y / Z / θ)	Manual alignment by test site stage
Interface	RS 232 (Optional GPIB)
Jam Rate	1/2000 (exclude any sticky residue)
Change Over Time	< 10 min.

All specifications are subject to change without notice.



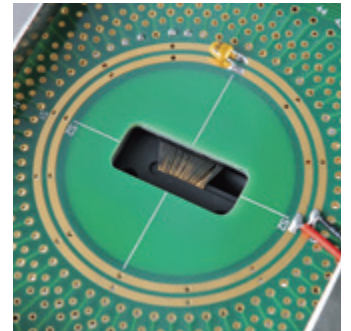
Loading



Picking Up



Positioning



Testing

ORDERING INFORMATION

3112 : Die Test Handler

Developed and Manufactured by :

Worldwide Distribution and Service Network

HEADQUARTERS
CHROMA ATE INC.
66 Hwaya 1st Rd., Kueishan
Hwaya Technology Park,
Taoyuan County 33383, Taiwan
Tel: +886-3-327-9999
Fax: +886-3-327-8898
<http://www.chromaate.com>
E-mail: info@chromaate.com

U.S.A.
CHROMA ATE INC.(U.S.A.)
7 Chrysler Irvine,
CA 92618
Tel: +1-949-421-0355
Fax: +1-949-421-0353
<http://www.chromaus.com>
E-mail: info@chromaus.com

EUROPE
CHROMA ATE EUROPE B.V.
Morsestraat 32, 6716 AH Ede,
The Netherlands
Tel: +31-318-648282
Fax: +31-318-648288
<http://www.chromaeu.com>
E-mail: sales@chromaeu.com

JAPAN
CHROMA JAPAN CORP.
472 Nippa-cho, Kouhoku-ku,
Yokohama-shi, Kanagawa,
223-0057 Japan
Tel: +81-45-542-1118
Fax: +81-45-542-1080
<http://www.chroma.co.jp>
E-mail: info@chromaate.com

CHINA
CHROMA ELECTRONICS
(SHENZHEN) CO., LTD.
8F, No.4, Nanyou Tian An
Industrial Estate, Shenzhen,
China PC: 518052
Tel: +86-755-2664-4598
Fax: +86-755-2641-9620