

# MODEL MP5200



## Wireless Test Station



### Introduction

The MP5200 deploys state-of-the-art Software Defined Radio (SDR) architecture that consists of full extendibility to all current and future Wi-Fi / Bluetooth standards. By upgrading firmware and hardware, it will be capable to support LTE and other wireless standards in the future.

The MP5200 contains high quality VSA (Vector Signal Analyzer) & VSG (Vector Signal Generator) to provide a complete and versatile test environment. A highly integrated GUI is both intuitive and user-friendly which can run simple test of Wi-Fi / Bluetooth signal within few clicks. Supported measurement items include EVM, power, frequency error, IQ imbalance, 20dB Bandwidth, FM Demodulator Output, etc.

MP5200 comes with fully programmed test waveforms for Wi-Fi 802.11a/b/g/n/ac/ax & Bluetooth V.1.x/2.x/3.x EDR/4.xBLE/5.1 allowing immediate testing for DUTs. Moreover, a built-in waveform generator utility allows users to establish arbitrary Wi-Fi / Bluetooth test signals. Automatic mass production turnkey software is also available upon request.

### Features

- Software defined radio architecture of extensibility to future wireless standards
- Wi-Fi 802.11 ac/ax, a/b/g/n, p/af/ah
- Bluetooth v1.x/v2.x/v3.x/v4.x/v5.1
- Zigbee/Z-Wave/DECT
- User friendly GUI for R&D/QA applications
- API for production automation programming
- Turn-key production automation software support upon request

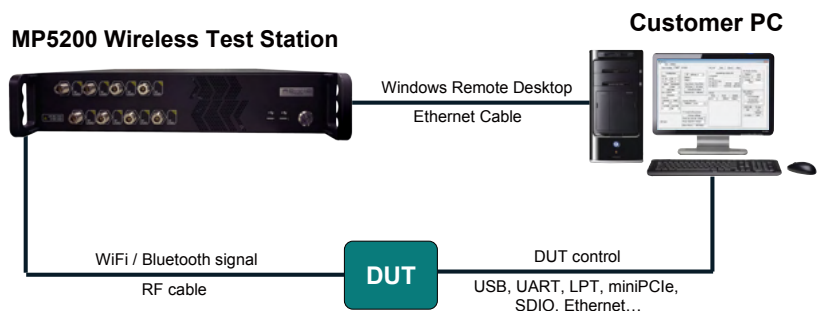


Copyright © 2020 ADIVIC Technology Corporation. All rights reserved. All company and product names are trademarks or registered trademarks of their respective manufactures. ADIVIC Technology Corporation reserves the right to change without notice

9F., No. 88, Wenmao Rd., Guishan Dist., Taoyuan City 333001, Taiwan  
TEL: 886-3-327-9968  
Web: www.adivic.com

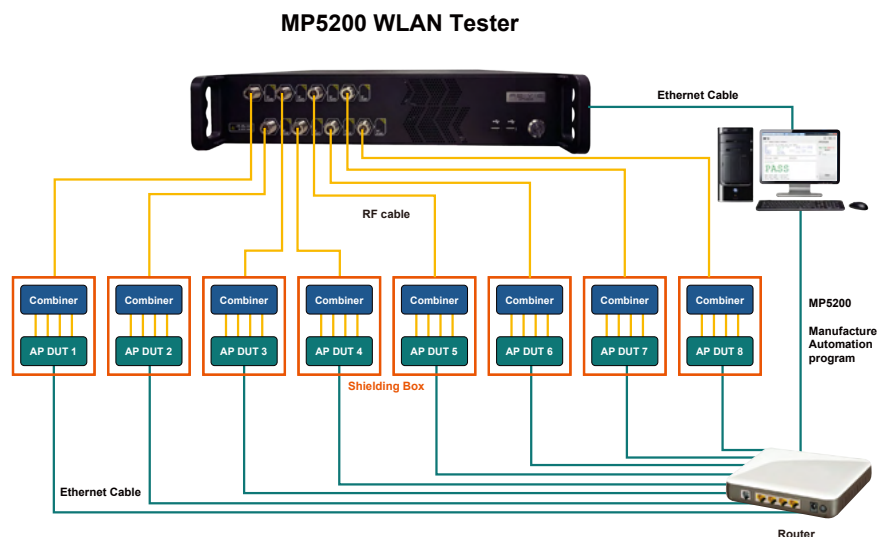
### MP5200 R&D Graphic Program

#### MP5200 Full Test Setup for R&D/QA



MP5200 is a Windows-based industrial computer. GUI application that runs on MP5200 is accessible to a user who applies Windows Remote Desktop from a separate customer PC. This customer PC requires no additional software installation.

#### MP5200 Automated Test Setup for Mass Production



## MP5200 General Technical Specifications

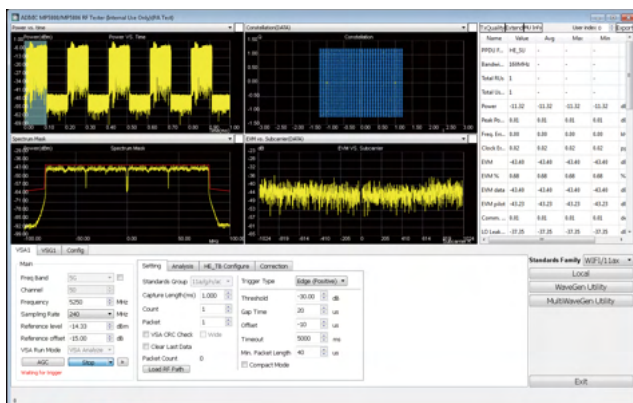
### >> VSA (Vector Signal Analyzer)

Parameter	Value
Input frequency range	2150 MHz ~ 2600 MHz 4900 MHz ~ 6000 MHz opt.10 MHz ~ 6000 MHz
IF bandwidth	200 MHz
Maximum input power	+30 dBm peak +20 dBm average
Input power accuracy @ (+20 to -75 dBm)	+/-0.75 dB (+/-0.5 dB Typical)
Phase noise	< -100 dBc 1 KHz offset @ 2.4 GHz < -95 dBc 1 KHz offset @ 5.8 GHz
LO leakage (DC offset) @ after self-calibration	< -50 dBc @ -10 dBm
Sideband image (IQ-imbalance) @ after self-calibration	< -50 dBc @ -10 dBm
IMD3 (Third order input inter-modulation distortion)	< -70 dBc @ -10 dBm
Input return loss	< -12 dB
ADC resolution	16-bit
ADC sampling rate	240 MS/s
Initial frequency accuracy	+/-50 ppb maximum (OCXO) @ 25 °C, after 30 minutes warm up
Frequency temperature stability	+/-20 ppb maximum (OCXO) @ 0 ~ 50 °C
Frequency aging	+/-1 ppb / day maximum (OCXO) +/-100 ppb / year maximum (OCXO)
Operating temperature	0 ~ 50 °C
Storage temperature	-25 ~ 60 °C
Operating voltage	100 ~ 240 V AC (+/-10%) 50 ~ 60 Hz (+/-5%)
Warm-up time	> 30 minutes

### >> VSG (Vector Signal Generator)

Parameter	Value
Output frequency range	2150 MHz ~ 2600 MHz 4900 MHz ~ 6000 MHz opt.10 MHz ~ 6000 MHz
IF bandwidth	200 MHz
Maximum output power @ CW	+0.00 dBm
Minimum output power @ CW	-130.00 dBm
Output power accuracy @ (0 to -95 dBm)	+/-0.75 dB (+/-0.5 dB Typical)
Phase noise	< -100 dBc 1 KHz offset @ 2.4 GHz < -95 dBc 1 KHz offset @ 5.8 GHz
LO leakage (DC offset) @ after self-calibration	< -50 dBc @ -10 dBm
Sideband image (IQ-imbalance) @ after self-calibration	< -50 dBc @ -10 dBm
IMD3 (Third order input inter-modulation distortion)	< -60 dBc @ -10 dBm (two -13 dBm tone)
Output return loss	< -12 dB
DAC resolution	16-bit
DAC sampling rate	960 MS/s
Initial frequency accuracy	+/-50 ppb maximum (OCXO) @ 25 °C, after 30 minutes warm up
Frequency temperature stability	+/-20 ppb maximum (OCXO) @ 0 ~ 50 °C
Frequency aging	+/-1 ppb / day maximum (OCXO) +/-100 ppb / year maximum (OCXO)
Operating temperature	0 ~ 50 °C
Storage temperature	-25 ~ +60 °C
Operating voltage	100 ~ 240 V AC (+/-10%) 50 ~ 60 Hz (+/-5%)
Warm-up time	> 30 minutes

### MP5200 GUI outlook (Wi-Fi)



### MP5200 automated mass-production turnkey software

